

50-Year Recertification Thermography Report

SUBMITTED TO,

Meadow Condominium Association, Inc
377 SW 56th Ave, Margate, FL 33068



MEADOWS CONDOMINIUM



Prepared by,

APEX

PRECISION ENGINEERING

3177 SW 129th Way, Margate, FL 33027

[INTENTIONALLY LEFT BLANK]

1. REPAIRS PRIORITY RATINGS

This Infrared Report is part of the Broward County Building Recertification “Infrared Thermography Inspection”: requirement approved by the Regulatory and Economic Resources Department. This report provides complete documentation of thermal patterns detected in your electrical equipment. It uses a subjective evaluation to help you prioritize repairs to provide the greatest return from this inspection and your maintenance.

Each thermogram is given a Repair Priority Rating which is based upon a combination of a comparative temperature rise from a component that shows an abnormal temperature pattern to one that is normal, and how critical the equipment is to the safe and profitable operations of your electrical system. When necessary, your qualified assistant’s opinion was sought to help determine the importance of a specific piece of equipment.

An industry accepted “Experienced Based Temperature Differential Table” is referenced for this report which provides temperature rise criteria and appropriate time-line suggested response actions for each severity level.

SEVERITY RATING	ACTION
<p>CRITICAL Delta Temperature Greater than 69° F (>15°C) *</p>	<p>IMMEDIATE ACTION IS REQUIRED! Repair or replace component as required. A thorough physical inspection of all related components is suggested. Perform an infrared inspection after completing repairs <i>(Major Discrepancy; repair immediately) *</i></p>
<p>SERIOUS Delta Temperature 40° F to 69° F (----- C) *</p>	<p>Repair/Replacement should be scheduled as soon as possible. Physical Inspection of all surrounding components is suggested. (Monitor until corrective measure can be accomplished) *</p>
<p>INTERMEDIATE DELTA Temperature Greater than 18° - 39° F (4° C to 15° C) *</p>	<p>Repairs should be made within a reasonable time Make note of any changes necessary regarding fluctuating load factors of possible physical change. (Indicates probable deficiency; repair as time permits) *</p>
<p>MINOR Delta Temperature 2° F - 18° F (1° C - 3° C) *</p>	<p>Repair can be made during normal preventative maintenance servicing. (Possible deficiency; warrants investigation) *</p>

All your electrical equipment was inspected in an “as found” condition. As we do not know the loading on any given circuit at the time it was inspected, any circuit not under load would not show any issues, even though once loaded, a serious problem may exist. All efforts are made to view equipment that is operational at the time of the inspection. Ideally, we would request a minimum of 40% current loading, but we also understand that some circuits are intermittent in their usage.

The following is the list of equipment that requires attention based on the result of the inspection:

- Club House – Roof
East AC Disconnect
See page #9
Critical Repair is Required.

- Club House – Roof
West AC Disconnect
See page #10
Minor Repair is Required.

- Club House
200A Main Service Disconnect #1
See page #11
Minor Repair is Required.

- Building 100 – Main Electrical Room
Unit 11 – Main Breaker
See page #25
Minor Repair is Required.

- Building 300 – Main Electrical Room
House Panel #1
See page #57
Minor Repair is Required.

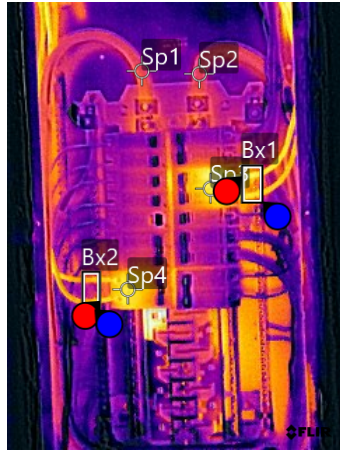
- Building 500 – Main Electrical Room
Main #2 – Unit's Main Circuit Breaker
See page #82
Minor Repair is Required.

2. DEFICIENCIES

[INTENTIONALLY LEFT BLANK]

Club House - Panel A

Repairs Are Not Required



FLIR1548.jpg



78518164

Parameters

Emissivity	0.95
Distance	1.00 ft
Reflected temp.	68.0 °F
Atmospheric temp.	68.0 °F
Relative humidity	50.0%
Ext. optics temp.	68.0 °F
Ext. optics trans.	1.00

File information

File name	FLIR1548.jpg
File size	497 KB
Width	240
Height	320
Minimum temp.	78.7 °F
Maximum temp.	89.5 °F

Camera information

Camera model	FLIR E75
Lens	FOL18
Camera serial	78518164
Filter	
Range max.	248.0 °F
Range min.	-4.0 °F
Field of view	23.50

Measurements

Bx1	
Max	87.6 °F
Avg	85.2 °F
Min	82.5 °F
Bx2	
Max	86.2 °F
Avg	83.7 °F
Min	82.2 °F
Dt1	
Bx1.Max-Sp3	0.5 °F
Dt2	
Sp4-Bx2.Max	0.6 °F
Sp1	83.4 °F
Sp2	83.3 °F
Sp3	87.1 °F
Sp4	86.8 °F

Geolocation

Coordinates	
Compass degrees	

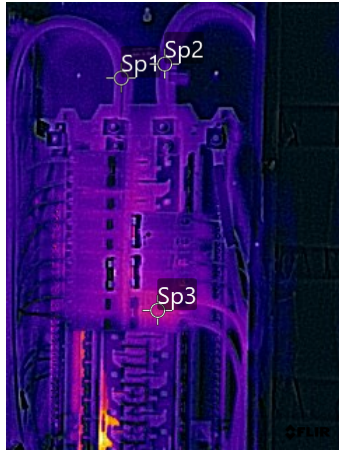
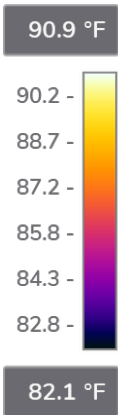
Text annotations

The temperature observed in the 2P-50A circuit breaker at positions 6 and 8 is the result of the consumption measured at the time of the inspection.
 Phase A: 16.5 Amp
 Phase B: 16.9 Amp
 Also, the temperature observed in the 2P-50A circuit breaker at positions 15 and 17 is the result of the consumption measured at the time of the inspection.
 Phase A: 15.4 Amp
 Phase B: 15.9 Amp

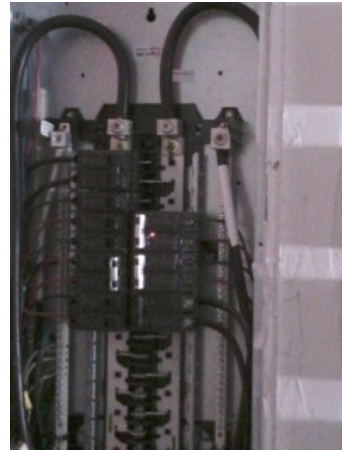
Deficiencies were not observed with this equipment at the time of the inspection.

Club House - Panel B

Repairs Are Not Required



FLIR1554.jpg



78518164

Parameters

Emissivity	0.95
Distance	4.37 ft
Reflected temp.	68.0 °F
Atmospheric temp.	68.0 °F
Relative humidity	50.0%
Ext. optics temp.	68.0 °F
Ext. optics trans.	1.00

File information

File name	FLIR1554.jpg
File size	464 KB
Width	240
Height	320
Minimum temp.	79.1 °F
Maximum temp.	90.9 °F

Camera information

Camera model	FLIR E75
Lens	FOL18
Camera serial	78518164
Filter	
Range max.	248.0 °F
Range min.	-4.0 °F
Field of view	23.50

Measurements

Sp1	83.3 °F
Sp2	83.2 °F
Sp3	85.2 °F

Geolocation

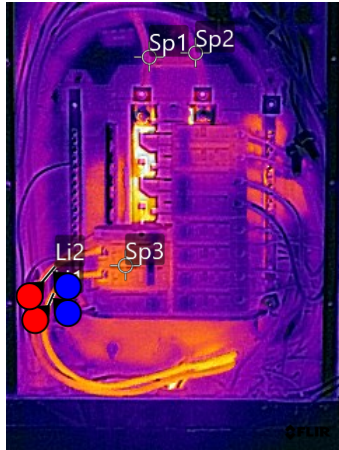
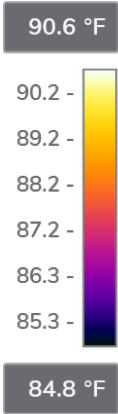
Coordinates	
Compass degrees	

Text annotations

Deficiencies were not observed at this equipment at the time of the inspection.

Club House - Panel C

Repairs Are Not Required



FLIR1558.jpg



78518164

Parameters

Emissivity	0.95
Distance	4.03 ft
Reflected temp.	68.0 °F
Atmospheric temp.	68.0 °F
Relative humidity	50.0%
Ext. optics temp.	68.0 °F
Ext. optics trans.	1.00

File information

File name	FLIR1558.jpg
File size	271 KB
Width	240
Height	320
Minimum temp.	84.0 °F
Maximum temp.	93.5 °F

Camera information

Camera model	FLIR E75
Lens	FOL18
Camera serial	78518164
Filter	
Range max.	248.0 °F
Range min.	-4.0 °F
Field of view	23.50

Measurements

Li1	
Max	88.6 °F
Avg	88.5 °F
Min	88.3 °F
Li2	
Max	87.8 °F
Avg	87.5 °F
Min	86.8 °F
Sp1	86.5 °F
Sp2	86.5 °F
Sp3	88.1 °F

Geolocation

Coordinates	
Compass degrees	

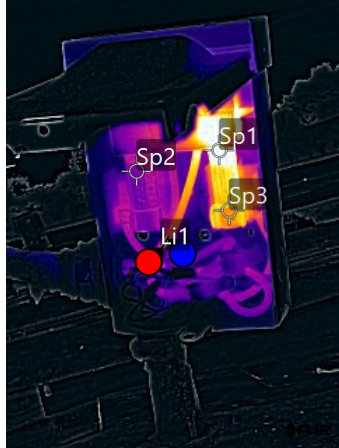
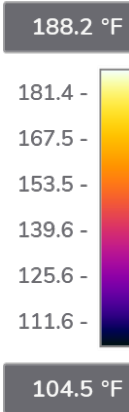
Text annotations

The temperature observed in the 2P-60A circuit breaker at positions 11 and 13 is the result of the consumption measured at the time of the inspection.
Phase A: 10.4 Amp
Phase B: 11.4 Amp

Deficiencies were not observed with this equipment at the time of the inspection.

Club House - Roof - East AC Disconnect

Critical Repair is Required



FLIR1560.jpg



78518164

Parameters

Emissivity	0.95
Distance	1.00 ft
Reflected temp.	68.0 °F
Atmospheric temp.	68.0 °F
Relative humidity	50.0%
Ext. optics temp.	68.0 °F
Ext. optics trans.	1.00

File information

File name	FLIR1560.jpg
File size	470 KB
Width	240
Height	320
Minimum temp.	77.0 °F
Maximum temp.	266.4 °F

Camera information

Camera model	FLIR E75
Lens	FOL18
Camera serial	78518164
Filter	
Range max.	248.0 °F
Range min.	-4.0 °F
Field of view	23.50

Measurements

Dt1	
Sp1-Sp3	*86.9 °F
Dt2	
Sp1-Li1.Max	*104.4 °F
Li1	
Max	145.6 °F
Avg	144.7 °F
Min	143.2 °F
Sp1	*250.0 °F
Sp2	124.1 °F
Sp3	163.1 °F

Geolocation

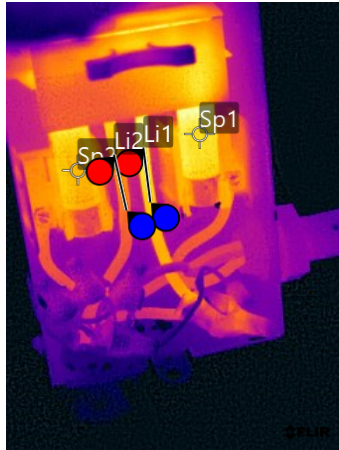
Coordinates	
Compass degrees	

Text annotations

Critical - Immediately Repair is Required
The electrical contractor shall replace the existing disconnect switch with a new one rated for the condition of use.

Club House - Roof - West AC Disconnect

Minor repair is Required



FLIR1570.jpg

78518164



Parameters

Emissivity	0.95
Distance	1.99 ft
Reflected temp.	68.0 °F
Atmospheric temp.	68.0 °F
Relative humidity	50.0%
Ext. optics temp.	68.0 °F
Ext. optics trans.	1.00

File information

File name	FLIR1570.jpg
File size	375 KB
Width	240
Height	320
Minimum temp.	82.5 °F
Maximum temp.	127.5 °F

Camera information

Camera model	FLIR E75
Lens	FOL18
Camera serial	78518164
Filter	
Range max.	248.0 °F
Range min.	-4.0 °F
Field of view	23.50

Measurements

Li1	
Max	122.7 °F
Avg	120.0 °F
Min	117.5 °F
Li2	
Max	114.6 °F
Avg	112.0 °F
Min	109.4 °F
Sp1	119.2 °F
Sp2	115.3 °F

Geolocation

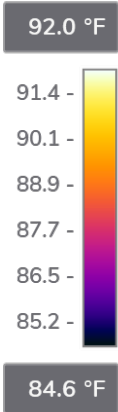
Coordinates	
Compass degrees	

Text annotations

Preventive maintenance will be required on this disconnect. However, this disconnect switch will be replaced as per the comment included in the electrical supplemental report.

Club House - 200A Main Service Disconnect #1

Minor repair is Required



FLIR1574.jpg



78518164

Parameters

Emissivity	0.95
Distance	3.61 ft
Reflected temp.	68.0 °F
Atmospheric temp.	68.0 °F
Relative humidity	50.0%
Ext. optics temp.	68.0 °F
Ext. optics trans.	1.00

File information

File name	FLIR1574.jpg
File size	236 KB
Width	240
Height	320
Minimum temp.	83.0 °F
Maximum temp.	88.5 °F

Camera information

Camera model	FLIR E75
Lens	FOL18
Camera serial	78518164
Filter	
Range max.	248.0 °F
Range min.	-4.0 °F
Field of view	23.50

Measurements

Dt1	
Sp1-Sp4	1.3 °F
Dt2	
Sp1-Sp2	2.2 °F
Sp1	88.4 °F
Sp2	86.2 °F
Sp3	85.1 °F
Sp4	87.2 °F

Geolocation

Coordinates	
Compass degrees	

Text annotations

Minor Repair is Required

The current on phases A and B was measured at 11.1 and 13.6 amps respectively at the time of inspection.

There is a minor temperature difference between Phase A and Phase B of 2.2°F.

Also, there is a temperature difference between Sp1 and Sp4, which is indicative that the hot spot could be on the switch reed, regardless of the aforementioned consumption difference between Phase A and B. The electrical contractor will need to check the terminal connections and provide preventative maintenance on this circuit breaker.

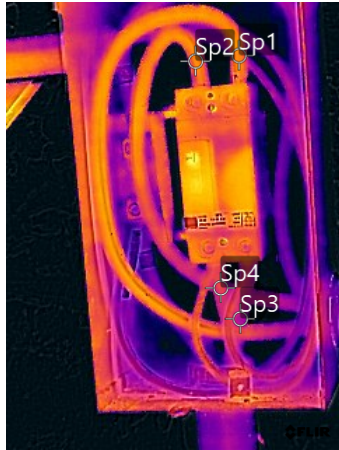
Club House - 200A Main Service Disconnect #2

Repairs Are Not Required

87.2 °F



82.8 °F



FLIR1578.jpg



78518164

Parameters

Emissivity	0.95
Distance	3.50 ft
Reflected temp.	68.0 °F
Atmospheric temp.	68.0 °F
Relative humidity	50.0%
Ext. optics temp.	68.0 °F
Ext. optics trans.	1.00

File information

File name	FLIR1578.jpg
File size	232 KB
Width	240
Height	320
Minimum temp.	81.5 °F
Maximum temp.	86.3 °F

Camera information

Camera model	FLIR E75
Lens	FOL18
Camera serial	78518164
Filter	
Range max.	248.0 °F
Range min.	-4.0 °F
Field of view	23.50

Measurements

Sp1	84.4 °F
Sp2	84.4 °F
Sp3	83.7 °F
Sp4	84.1 °F

Geolocation

Coordinates	
Compass degrees	

Text annotations

Deficiencies were not observed at this equipment at the time of the inspection.

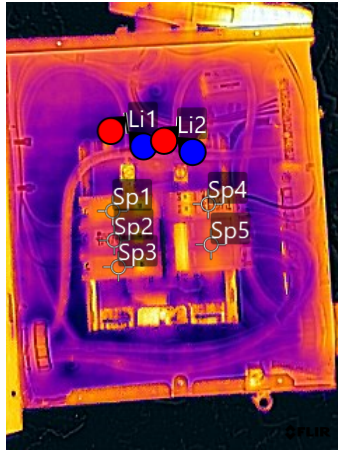
Club House - Outdoor House Panel

Repairs Are Not Required

87.7 °F



82.8 °F



FLIR1580.jpg



78518164

Parameters

Emissivity	0.95
Distance	3.14 ft
Reflected temp.	68.0 °F
Atmospheric temp.	68.0 °F
Relative humidity	50.0%
Ext. optics temp.	68.0 °F
Ext. optics trans.	1.00

File information

File name	FLIR1580.jpg
File size	243 KB
Width	240
Height	320
Minimum temp.	82.3 °F
Maximum temp.	89.4 °F

Camera information

Camera model	FLIR E75
Lens	FOL18
Camera serial	78518164
Filter	
Range max.	248.0 °F
Range min.	-4.0 °F
Field of view	23.50

Measurements

Li1	
Max	83.8 °F
Avg	83.7 °F
Min	83.6 °F
Li2	
Max	83.8 °F
Avg	83.8 °F
Min	83.7 °F
Sp1	84.8 °F
Sp2	84.2 °F
Sp3	84.5 °F
Sp4	84.5 °F
Sp5	84.3 °F

Geolocation

Coordinates	
Compass degrees	

Text annotations

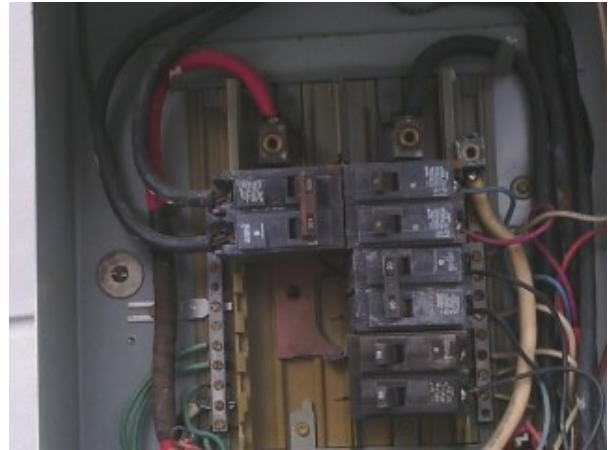
Deficiencies were not observed at this equipment at the time of the inspection.

House Panel - Tennis Court - Electrical Panel A

Repairs Are Not Required



FLIR1964.jpg



78518164

Parameters

Emissivity	0.95
Distance	3.03 ft
Reflected temp.	68.0 °F
Atmospheric temp.	68.0 °F
Relative humidity	50.0%
Ext. optics temp.	68.0 °F
Ext. optics trans.	1.00

File information

File name	FLIR1964.jpg
File size	550 KB
Width	320
Height	240
Minimum temp.	89.8 °F
Maximum temp.	100.7 °F

Camera information

Camera model	FLIR E75
Lens	FOL18
Camera serial	78518164
Filter	
Range max.	248.0 °F
Range min.	-4.0 °F
Field of view	23.50

Measurements

Sp1	94.2 °F
Sp2	93.8 °F
Sp3	93.9 °F
Sp4	93.9 °F
Sp5	93.6 °F
Sp6	93.4 °F

Geolocation

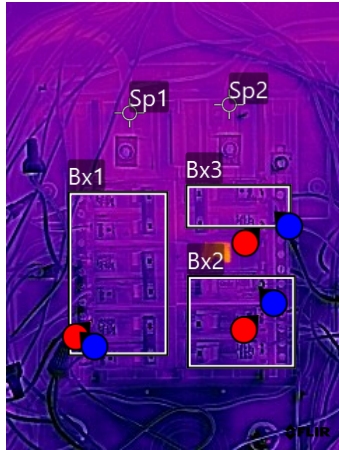
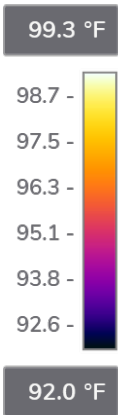
Coordinates	
Compass degrees	

Text annotations

Deficiencies were not observed at this equipment at the time of the inspection.

House Panel - Tennis Court - Electrical Panel B

Repairs Are Not Required



FLIR1968.jpg



78518164

Parameters

Emissivity	0.95
Distance	2.75 ft
Reflected temp.	68.0 °F
Atmospheric temp.	68.0 °F
Relative humidity	50.0%
Ext. optics temp.	68.0 °F
Ext. optics trans.	1.00

File information

File name	FLIR1968.jpg
File size	541 KB
Width	240
Height	320
Minimum temp.	88.2 °F
Maximum temp.	98.6 °F

Camera information

Camera model	FLIR E75
Lens	FOL18
Camera serial	78518164
Filter	
Range max.	248.0 °F
Range min.	-4.0 °F
Field of view	23.50

Measurements

Bx1	
Max	98.6 °F
Avg	93.3 °F
Min	90.6 °F
Bx2	
Max	95.2 °F
Avg	93.2 °F
Min	90.4 °F
Bx3	
Max	96.1 °F
Avg	93.6 °F
Min	92.6 °F
Sp1	
Max	93.9 °F
Sp2	
Max	93.9 °F

Geolocation

Coordinates	
Compass degrees	

Text annotations

Deficiencies were not observed at this equipment at the time of the inspection.

Building 100 - Main Electrical Room - Main Service Disconnect #1 - Feeders

Repairs Are Not Required



FLIR1584.jpg



78518164

Parameters

Emissivity	0.95
Distance	4.83 ft
Reflected temp.	68.0 °F
Atmospheric temp.	68.0 °F
Relative humidity	50.0%
Ext. optics temp.	68.0 °F
Ext. optics trans.	1.00

File information

File name	FLIR1584.jpg
File size	421 KB
Width	320
Height	240
Minimum temp.	84.3 °F
Maximum temp.	86.7 °F

Camera information

Camera model	FLIR E75
Lens	FOL18
Camera serial	78518164
Filter	
Range max.	248.0 °F
Range min.	-4.0 °F
Field of view	23.50

Measurements

Bx1	
Max	86.6 °F
Avg	85.3 °F
Min	84.7 °F

Geolocation

Coordinates	
Compass degrees	

Text annotations

Deficiencies were not observed at this equipment at the time of the inspection.

Building 100 - Main Electrical Room - Main Service Disconnect #1 - Circuit Breaker

Repairs Are Not Required



FLIR1588.jpg



78518164

Parameters

Emissivity	0.95
Distance	4.49 ft
Reflected temp.	68.0 °F
Atmospheric temp.	68.0 °F
Relative humidity	50.0%
Ext. optics temp.	68.0 °F
Ext. optics trans.	1.00

File information

File name	FLIR1588.jpg
File size	431 KB
Width	320
Height	240
Minimum temp.	85.0 °F
Maximum temp.	88.7 °F

Camera information

Camera model	FLIR E75
Lens	FOL18
Camera serial	78518164
Filter	
Range max.	248.0 °F
Range min.	-4.0 °F
Field of view	23.50

Measurements

Geolocation

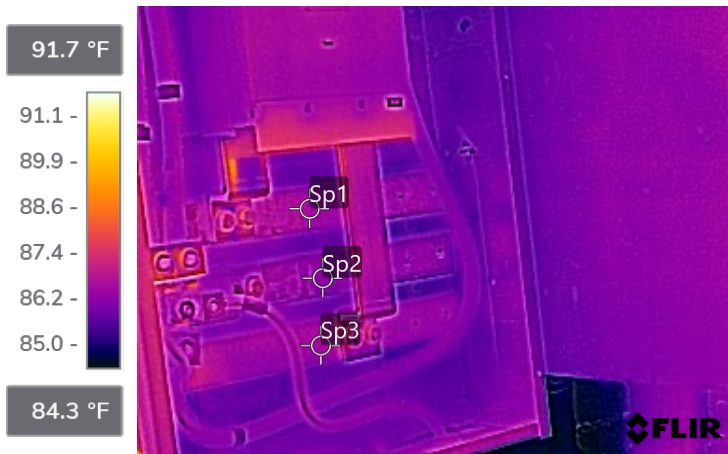
Coordinates
Compass degrees

Text annotations

Deficiencies were not observed at this equipment at the time of the inspection.

Building 100 - Main Electrical Room - Main Service Disconnect #1 - Distribution bars

Repairs Are Not Required



FLIR1586.jpg



78518164

Parameters

Emissivity	0.95
Distance	5.61 ft
Reflected temp.	68.0 °F
Atmospheric temp.	68.0 °F
Relative humidity	50.0%
Ext. optics temp.	68.0 °F
Ext. optics trans.	1.00

File information

File name	FLIR1586.jpg
File size	278 KB
Width	320
Height	240
Minimum temp.	84.4 °F
Maximum temp.	90.2 °F

Camera information

Camera model	FLIR E75
Lens	FOL18
Camera serial	78518164
Filter	
Range max.	248.0 °F
Range min.	-4.0 °F
Field of view	23.50

Measurements

Sp1	86.5 °F
Sp2	86.2 °F
Sp3	86.5 °F

Geolocation

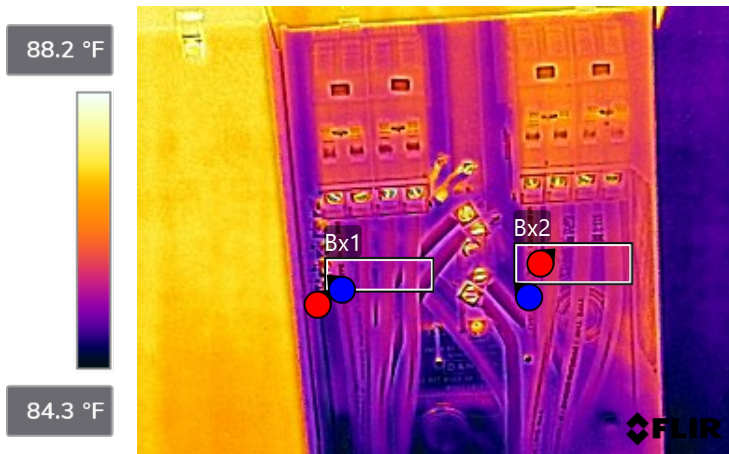
Coordinates	
Compass degrees	

Text annotations

Deficiencies were not observed at this equipment at the time of the inspection.

Building 100 - Main Electrical Room - Main #1 - Units' Feeders and Main Circuit Breakers

Repairs Are Not Required



FLIR1592.jpg



78518164

Parameters

Emissivity	0.95
Distance	3.25 ft
Reflected temp.	68.0 °F
Atmospheric temp.	68.0 °F
Relative humidity	50.0%
Ext. optics temp.	68.0 °F
Ext. optics trans.	1.00

File information

File name	FLIR1592.jpg
File size	485 KB
Width	320
Height	240
Minimum temp.	84.3 °F
Maximum temp.	90.5 °F

Camera information

Camera model	FLIR E75
Lens	FOL18
Camera serial	78518164
Filter	
Range max.	248.0 °F
Range min.	-4.0 °F
Field of view	23.50

Measurements

Bx1	
Max	87.5 °F
Avg	85.3 °F
Min	84.7 °F
Bx2	
Max	85.7 °F
Avg	85.4 °F
Min	84.8 °F

Geolocation

Coordinates	
Compass degrees	

Text annotations

Deficiencies were not observed at this equipment at the time of the inspection.

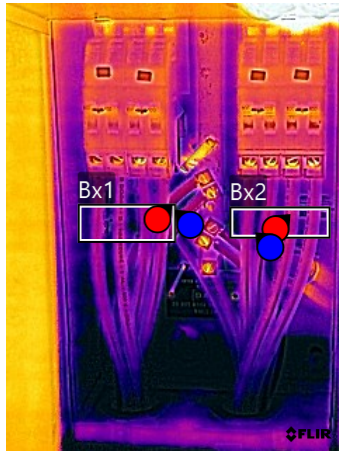
Building 100 - Main Electrical Room - Main #1 - Units' Feeders and Main Circuit Breakers

Repairs Are Not Required

89.0 °F



85.0 °F



FLIR1594.jpg



78518164

Parameters

Emissivity	0.95
Distance	3.28 ft
Reflected temp.	68.0 °F
Atmospheric temp.	68.0 °F
Relative humidity	50.0%
Ext. optics temp.	68.0 °F
Ext. optics trans.	1.00

File information

File name	FLIR1594.jpg
File size	243 KB
Width	240
Height	320
Minimum temp.	83.7 °F
Maximum temp.	94.6 °F

Camera information

Camera model	FLIR E75
Lens	FOL18
Camera serial	78518164
Filter	
Range max.	248.0 °F
Range min.	-4.0 °F
Field of view	23.50

Measurements

Bx1	
Max	85.9 °F
Avg	85.5 °F
Min	84.8 °F
Bx2	
Max	86.1 °F
Avg	85.6 °F
Min	84.9 °F

Geolocation

Coordinates	
Compass degrees	

Text annotations

Deficiencies were not observed at this equipment at the time of the inspection.

Building 100 - Main Electrical Room - Main #1 - Units' Feeders and Main Circuit Breakers

Repairs Are Not Required

89.9 °F



85.1 °F



FLIR1596.jpg



78518164

Parameters

Emissivity	0.95
Distance	2.68 ft
Reflected temp.	68.0 °F
Atmospheric temp.	68.0 °F
Relative humidity	50.0%
Ext. optics temp.	68.0 °F
Ext. optics trans.	1.00

File information

File name	FLIR1596.jpg
File size	240 KB
Width	240
Height	320
Minimum temp.	84.6 °F
Maximum temp.	101.0 °F

Camera information

Camera model	FLIR E75
Lens	FOL18
Camera serial	78518164
Filter	
Range max.	248.0 °F
Range min.	-4.0 °F
Field of view	23.50

Measurements

Sp1	86.8 °F
Sp2	86.9 °F
Sp3	86.3 °F
Sp4	86.2 °F

Geolocation

Coordinates	
Compass degrees	

Text annotations

Deficiencies were not observed at this equipment at the time of the inspection.

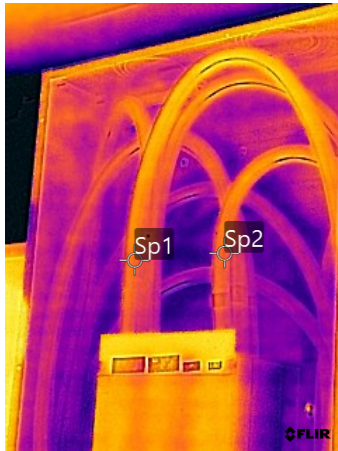
Building 100 - Main Electrical Room - Main Service Disconnect #2 - Feeders

Repairs Are Not Required

90.1 °F



85.2 °F



FLIR1626.jpg



78518164

Parameters

Emissivity	0.95
Distance	4.50 ft
Reflected temp.	68.0 °F
Atmospheric temp.	68.0 °F
Relative humidity	50.0%
Ext. optics temp.	68.0 °F
Ext. optics trans.	1.00

File information

File name	FLIR1626.jpg
File size	256 KB
Width	240
Height	320
Minimum temp.	84.4 °F
Maximum temp.	88.4 °F

Camera information

Camera model	FLIR E75
Lens	FOL18
Camera serial	78518164
Filter	
Range max.	248.0 °F
Range min.	-4.0 °F
Field of view	23.50

Measurements

Sp1	86.9 °F
Sp2	86.8 °F

Geolocation

Coordinates	
Compass degrees	

Text annotations

Deficiencies were not observed at this equipment at the time of the inspection.

Building 100 - Main Electrical Room - Main Service Disconnect #2 - Circuit Breaker

Repairs Are Not Required

92.9 °F



85.6 °F



FLIR1628.jpg



78518164

Parameters

Emissivity	0.95
Distance	3.80 ft
Reflected temp.	68.0 °F
Atmospheric temp.	68.0 °F
Relative humidity	50.0%
Ext. optics temp.	68.0 °F
Ext. optics trans.	1.00

File information

File name	FLIR1628.jpg
File size	298 KB
Width	240
Height	320
Minimum temp.	85.3 °F
Maximum temp.	92.5 °F

Camera information

Camera model	FLIR E75
Lens	FOL18
Camera serial	78518164
Filter	
Range max.	248.0 °F
Range min.	-4.0 °F
Field of view	23.50

Measurements

Bx1	
Max	88.4 °F

Geolocation

Coordinates	
Compass degrees	

Text annotations

Deficiencies were not observed at this equipment at the time of the inspection.

Building 100 - Main Electrical Room - Main Service Disconnect #2 - Distribution Bar

Repairs Are Not Required

90.9 °F



83.5 °F



FLIR1624.jpg



78518164

Parameters

Emissivity	0.95
Distance	4.23 ft
Reflected temp.	68.0 °F
Atmospheric temp.	68.0 °F
Relative humidity	50.0%
Ext. optics temp.	68.0 °F
Ext. optics trans.	1.00

File information

File name	FLIR1624.jpg
File size	294 KB
Width	240
Height	320
Minimum temp.	83.9 °F
Maximum temp.	93.5 °F

Camera information

Camera model	FLIR E75
Lens	FOL18
Camera serial	78518164
Filter	
Range max.	248.0 °F
Range min.	-4.0 °F
Field of view	23.50

Measurements

Sp1	87.0 °F
Sp2	86.1 °F
Sp3	86.5 °F

Geolocation

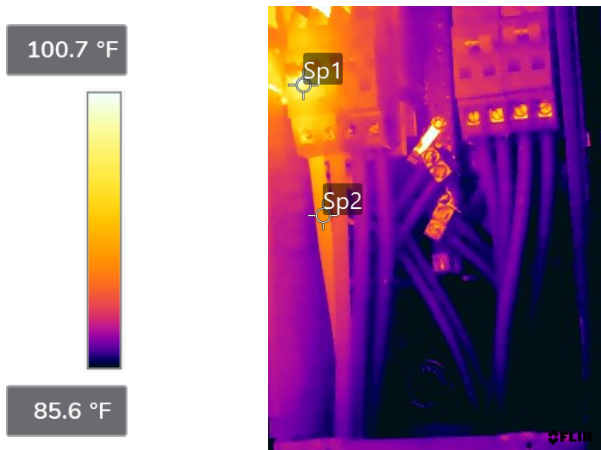
Coordinates	
Compass degrees	

Text annotations

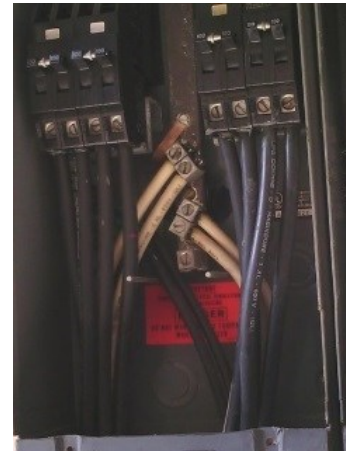
Deficiencies were not observed at this equipment at the time of the inspection.

Building 100 - Main Electrical Room - Unit 111 - Main Breaker

Minor Repair Is Required



FLIR1604.jpg



78518164

Parameters

Emissivity	0.95
Distance	2.89 ft
Reflected temp.	68.0 °F
Atmospheric temp.	68.0 °F
Relative humidity	50.0%
Ext. optics temp.	68.0 °F
Ext. optics trans.	1.00

File information

File name	FLIR1604.jpg
File size	258 KB
Width	240
Height	320
Minimum temp.	82.9 °F
Maximum temp.	125.5 °F

Camera information

Camera model	FLIR E75
Lens	FOL18
Camera serial	78518164
Filter	
Range max.	248.0 °F
Range min.	-4.0 °F
Field of view	23.50

Measurements

Dt1	
Sp1-Sp2	7.2 °F
Sp1	98.7 °F
Sp2	91.5 °F

Geolocation

Coordinates	
Compass degrees	

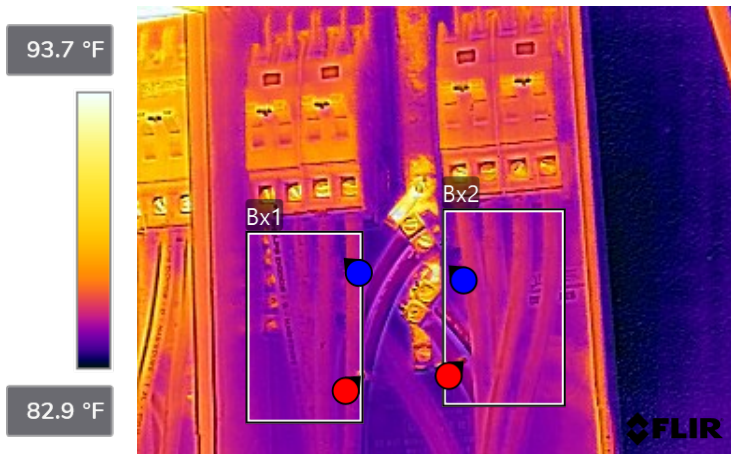
Text annotations

At the time of the inspection, the consumption on this breaker was measured at 13 Amp per phase. However, the difference in color and temperature (7.2 ° F) between the circuit breaker and the associated wires is indicative that the hot point is being produced in the circuit.

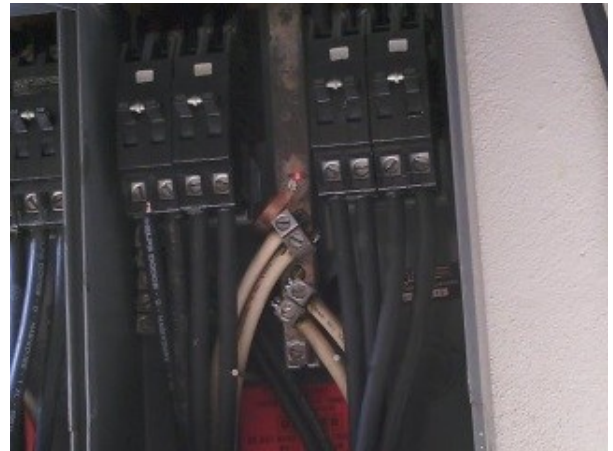
This condition could be a result of a malfunctioning of the circuit breaker. The contractor shall provide maintenance to this circuit breaker and its connections. If the issue continues, the circuit breaker shall be replaced by a new one of the same type and rating.

Building 100 - Main Electrical Room - Main #2 - Units' Feeders and Main Circuit Breakers

Repairs Are Not Required



FLIR1608.jpg



78518164

Parameters

Emissivity	0.95
Distance	3.19 ft
Reflected temp.	68.0 °F
Atmospheric temp.	68.0 °F
Relative humidity	50.0%
Ext. optics temp.	68.0 °F
Ext. optics trans.	1.00

File information

File name	FLIR1608.jpg
File size	272 KB
Width	320
Height	240
Minimum temp.	82.7 °F
Maximum temp.	102.2 °F

Camera information

Camera model	FLIR E75
Lens	FOL18
Camera serial	78518164
Filter	
Range max.	248.0 °F
Range min.	-4.0 °F
Field of view	23.50

Measurements

Bx1	
Max	87.8 °F
Avg	84.5 °F
Min	83.4 °F
Bx2	
Max	87.2 °F
Avg	84.7 °F
Min	83.6 °F

Geolocation

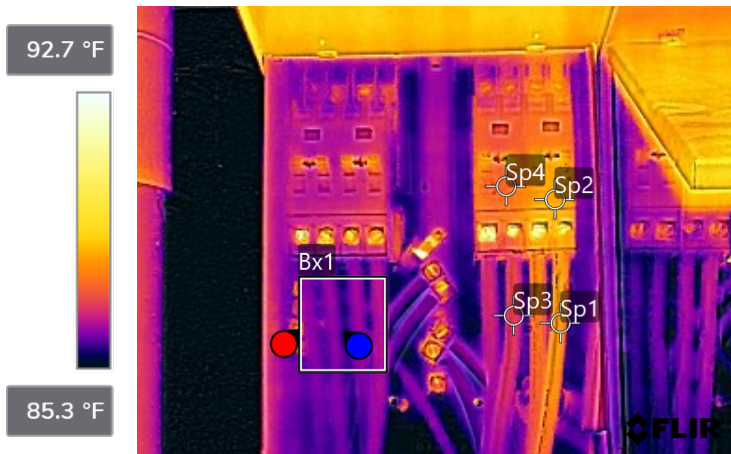
Coordinates	
Compass degrees	

Text annotations

Deficiencies were not observed at this equipment at the time of the inspection.

Building 100 - Main Electrical Room - Main #2 - Units' Feeders and Main Circuit Breakers

Repairs Are Not Required



FLIR1610.jpg



78518164

Parameters

Emissivity	0.95
Distance	3.68 ft
Reflected temp.	68.0 °F
Atmospheric temp.	68.0 °F
Relative humidity	50.0%
Ext. optics temp.	68.0 °F
Ext. optics trans.	1.00

File information

File name	FLIR1610.jpg
File size	241 KB
Width	320
Height	240
Minimum temp.	84.0 °F
Maximum temp.	95.9 °F

Camera information

Camera model	FLIR E75
Lens	FOL18
Camera serial	78518164
Filter	
Range max.	248.0 °F
Range min.	-4.0 °F
Field of view	23.50

Measurements

Bx1	
Max	88.9 °F
Avg	86.2 °F
Min	85.5 °F
Sp1	88.1 °F
Sp2	88.4 °F
Sp3	87.1 °F
Sp4	87.5 °F

Geolocation

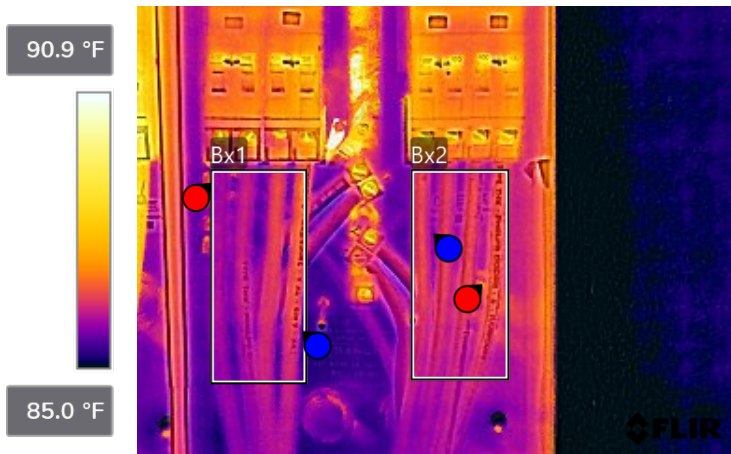
Coordinates	
Compass degrees	

Text annotations

The minor difference in temperature in Sp1 and Sp2 is a result of the temperature measured at the time of the inspection.
 Phase A: 9.7 Amp
 Phase B: 8.8 Amp
 Deficiencies were not observed with this equipment at the time of the inspection.

Building 100 - Main Electrical Room - Main #2 - Units' Feeders and Main Circuit Breakers

Repairs Are Not Required



FLIR1614.jpg



78518164

Parameters

Emissivity	0.95
Distance	3.21 ft
Reflected temp.	68.0 °F
Atmospheric temp.	68.0 °F
Relative humidity	50.0%
Ext. optics temp.	68.0 °F
Ext. optics trans.	1.00

File information

File name	FLIR1614.jpg
File size	227 KB
Width	320
Height	240
Minimum temp.	84.6 °F
Maximum temp.	101.3 °F

Camera information

Camera model	FLIR E75
Lens	FOL18
Camera serial	78518164
Filter	
Range max.	248.0 °F
Range min.	-4.0 °F
Field of view	23.50

Measurements

Bx1	
Max	87.0 °F
Avg	86.1 °F
Min	85.2 °F
Bx2	
Max	87.5 °F
Avg	86.4 °F
Min	85.5 °F

Geolocation

Coordinates	
Compass degrees	

Text annotations

Deficiencies were not observed at this equipment at the time of the inspection.

Building 100 - Main Electrical Room - House Panel #1

Repairs Are Not Required

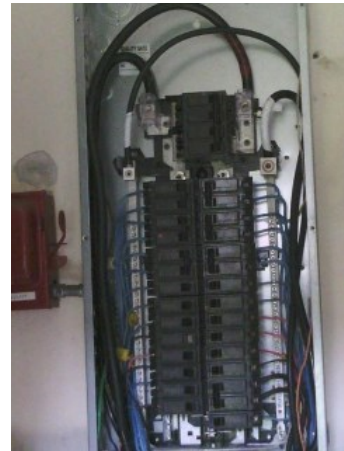
89.7 °F



84.9 °F



FLIR1622.jpg



78518164

Parameters

Emissivity	0.95
Distance	5.36 ft
Reflected temp.	68.0 °F
Atmospheric temp.	68.0 °F
Relative humidity	50.0%
Ext. optics temp.	68.0 °F
Ext. optics trans.	1.00

File information

File name	FLIR1622.jpg
File size	548 KB
Width	240
Height	320
Minimum temp.	84.0 °F
Maximum temp.	91.8 °F

Camera information

Camera model	FLIR E75
Lens	FOL18
Camera serial	78518164
Filter	
Range max.	248.0 °F
Range min.	-4.0 °F
Field of view	23.50

Measurements

Bx1	
Max	88.6 °F
Avg	86.3 °F
Min	85.3 °F
Bx2	
Max	87.9 °F
Avg	87.5 °F
Min	87.0 °F
Bx3	
Max	87.4 °F
Avg	87.0 °F
Min	86.8 °F

Geolocation

Coordinates	
Compass degrees	

Text annotations

Deficiencies were not observed at this equipment at the time of the inspection.

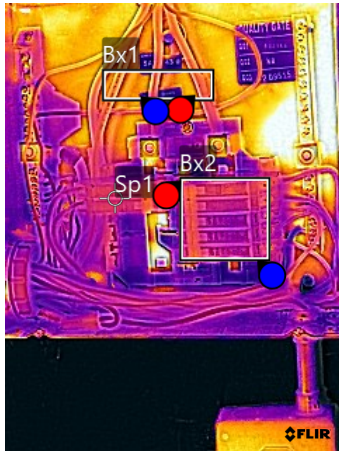
Building 100 - Main Electrical Room - House Panel #2

Repairs Are Not Required

90.2 °F



85.7 °F



FLIR1618.jpg



78518164

Parameters

Emissivity	0.95
Distance	3.08 ft
Reflected temp.	68.0 °F
Atmospheric temp.	68.0 °F
Relative humidity	50.0%
Ext. optics temp.	68.0 °F
Ext. optics trans.	1.00

File information

File name	FLIR1618.jpg
File size	633 KB
Width	240
Height	320
Minimum temp.	84.7 °F
Maximum temp.	92.8 °F

Camera information

Camera model	FLIR E75
Lens	FOL18
Camera serial	78518164
Filter	
Range max.	248.0 °F
Range min.	-4.0 °F
Field of view	23.50

Measurements

Bx1	
Max	88.9 °F
Avg	87.9 °F
Min	86.2 °F
Bx2	
Max	88.7 °F
Avg	87.3 °F
Min	86.6 °F
Sp1	87.4 °F

Geolocation

Coordinates	
Compass degrees	

Text annotations

Deficiencies were not observed at this equipment at the time of the inspection.

Building 200 - Main Electrical Room - Main Service Disconnect #1 - Feeders and Circuit Breakers

Repairs Are Not Required



FLIR1630.jpg



78518164

Parameters

Emissivity	0.95
Distance	4.97 ft
Reflected temp.	68.0 °F
Atmospheric temp.	68.0 °F
Relative humidity	50.0%
Ext. optics temp.	68.0 °F
Ext. optics trans.	1.00

File information

File name	FLIR1630.jpg
File size	517 KB
Width	320
Height	240
Minimum temp.	82.4 °F
Maximum temp.	86.2 °F

Camera information

Camera model	FLIR E75
Lens	FOL18
Camera serial	78518164
Filter	
Range max.	248.0 °F
Range min.	-4.0 °F
Field of view	23.50

Measurements

Sp1	83.4 °F
Sp2	83.6 °F
Sp3	84.0 °F
Sp4	83.6 °F
Sp5	83.5 °F

Geolocation

Coordinates	
Compass degrees	

Text annotations

Deficiencies were not observed at this equipment at the time of the inspection.

Building 200 - Main Electrical Room - Main Service Disconnect #1 - Main Circuit Breaker and Distribution Bars

Repairs Are Not Required

89.3 °F



83.9 °F



FLIR1632.jpg



78518164

Parameters

Emissivity	0.95
Distance	4.97 ft
Reflected temp.	68.0 °F
Atmospheric temp.	68.0 °F
Relative humidity	50.0%
Ext. optics temp.	68.0 °F
Ext. optics trans.	1.00

File information

File name	FLIR1632.jpg
File size	272 KB
Width	240
Height	320
Minimum temp.	83.1 °F
Maximum temp.	87.2 °F

Camera information

Camera model	FLIR E75
Lens	FOL18
Camera serial	78518164
Filter	
Range max.	248.0 °F
Range min.	-4.0 °F
Field of view	23.50

Measurements

Sp1	84.7 °F
Sp2	84.2 °F
Sp3	84.4 °F

Geolocation

Coordinates	
Compass degrees	

Text annotations

Deficiencies were not observed at this equipment at the time of the inspection.

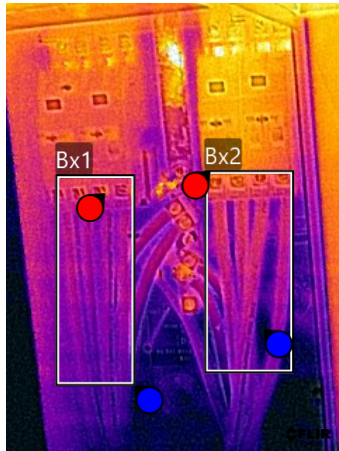
Building 200 - Main Electrical Room - Main #1 - Units' Feeders and Main Circuit Breakers

Repairs Are Not Required

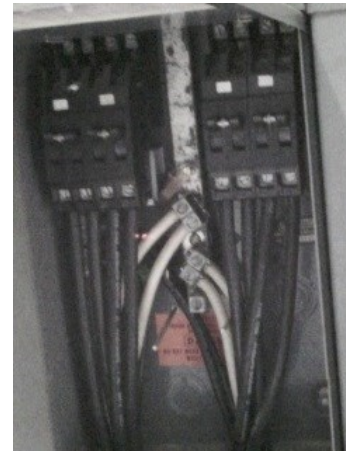
87.5 °F



82.7 °F



FLIR1634.jpg



78518164

Parameters

Emissivity	0.95
Distance	3.16 ft
Reflected temp.	68.0 °F
Atmospheric temp.	68.0 °F
Relative humidity	50.0%
Ext. optics temp.	68.0 °F
Ext. optics trans.	1.00

File information

File name	FLIR1634.jpg
File size	283 KB
Width	240
Height	320
Minimum temp.	82.3 °F
Maximum temp.	90.9 °F

Camera information

Camera model	FLIR E75
Lens	FOL18
Camera serial	78518164
Filter	
Range max.	248.0 °F
Range min.	-4.0 °F
Field of view	23.50

Measurements

Bx1	
Max	85.3 °F
Avg	83.4 °F
Min	82.8 °F
Bx2	
Max	84.3 °F
Avg	83.4 °F
Min	82.7 °F

Geolocation

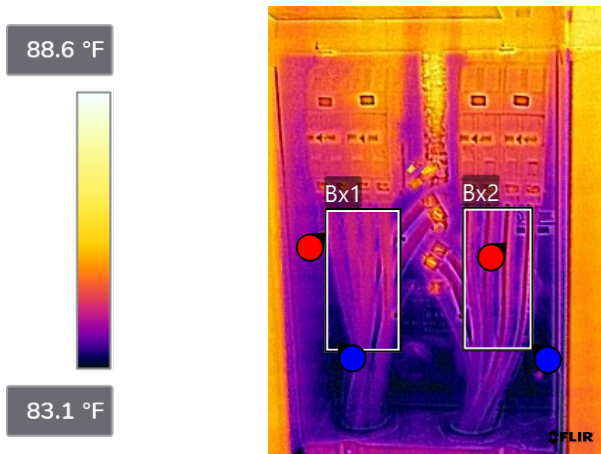
Coordinates	
Compass degrees	

Text annotations

Deficiencies were not observed at this equipment at the time of the inspection.

Building 200 - Main Electrical Room - Main #1 - Units' Feeders and Main Circuit Breakers

Repairs Are Not Required



FLIR1636.jpg



78518164

Parameters

Emissivity	0.95
Distance	3.27 ft
Reflected temp.	68.0 °F
Atmospheric temp.	68.0 °F
Relative humidity	50.0%
Ext. optics temp.	68.0 °F
Ext. optics trans.	1.00

File information

File name	FLIR1636.jpg
File size	266 KB
Width	240
Height	320
Minimum temp.	82.4 °F
Maximum temp.	86.6 °F

Camera information

Camera model	FLIR E75
Lens	FOL18
Camera serial	78518164
Filter	
Range max.	248.0 °F
Range min.	-4.0 °F
Field of view	23.50

Measurements

Bx1	
Max	85.3 °F
Avg	83.8 °F
Min	83.2 °F
Bx2	
Max	84.3 °F
Avg	83.9 °F
Min	83.2 °F

Geolocation

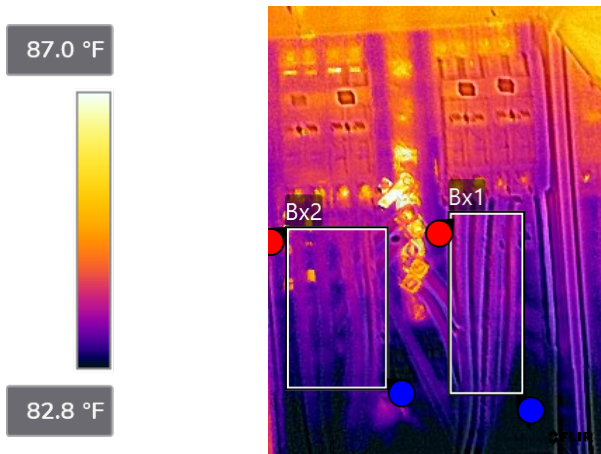
Coordinates	
Compass degrees	

Text annotations

Deficiencies were not observed at this equipment at the time of the inspection.

Building 200 - Main Electrical Room - Main #1 - Units' Feeders and Main Circuit Breakers

Repairs Are Not Required



FLIR1638.jpg



78518164

Parameters

Emissivity	0.95
Distance	3.14 ft
Reflected temp.	68.0 °F
Atmospheric temp.	68.0 °F
Relative humidity	50.0%
Ext. optics temp.	68.0 °F
Ext. optics trans.	1.00

File information

File name	FLIR1638.jpg
File size	264 KB
Width	240
Height	320
Minimum temp.	82.4 °F
Maximum temp.	93.5 °F

Camera information

Camera model	FLIR E75
Lens	FOL18
Camera serial	78518164
Filter	
Range max.	248.0 °F
Range min.	-4.0 °F
Field of view	23.50

Measurements

Bx1	
Max	83.8 °F
Avg	83.3 °F
Min	82.7 °F
Bx2	
Max	86.6 °F
Avg	83.3 °F
Min	82.8 °F

Geolocation

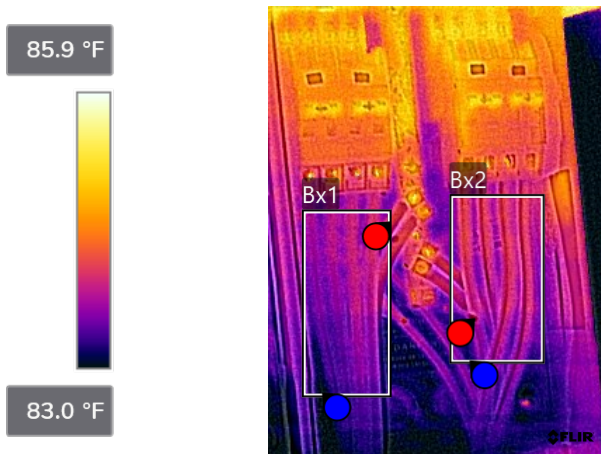
Coordinates	
Compass degrees	

Text annotations

Deficiencies were not observed at this equipment at the time of the inspection.

Building 200 - Main Electrical Room - Main #1 - Units' Feeders and Main Circuit Breakers

Repairs Are Not Required



FLIR1640.jpg



78518164

Parameters

Emissivity	0.95
Distance	3.05 ft
Reflected temp.	68.0 °F
Atmospheric temp.	68.0 °F
Relative humidity	50.0%
Ext. optics temp.	68.0 °F
Ext. optics trans.	1.00

File information

File name	FLIR1640.jpg
File size	313 KB
Width	240
Height	320
Minimum temp.	82.1 °F
Maximum temp.	87.1 °F

Camera information

Camera model	FLIR E75
Lens	FOL18
Camera serial	78518164
Filter	
Range max.	248.0 °F
Range min.	-4.0 °F
Field of view	23.50

Measurements

Bx1	
Max	84.1 °F
Avg	83.6 °F
Min	83.0 °F
Bx2	
Max	84.2 °F
Avg	83.7 °F
Min	83.1 °F

Geolocation

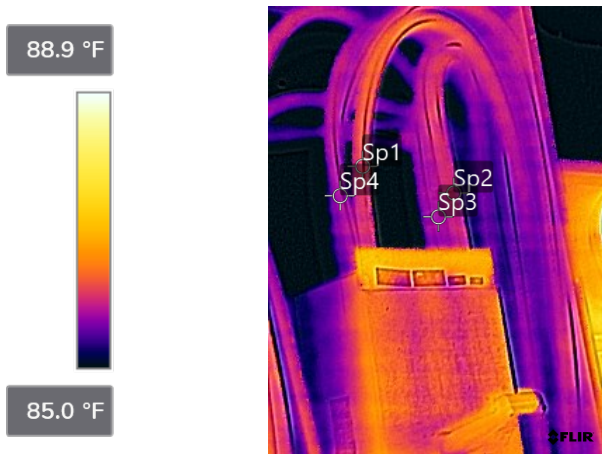
Coordinates	
Compass degrees	

Text annotations

Deficiencies were not observed at this equipment at the time of the inspection.

Building 200 - Main Electrical Room - Main Service Disconnect #2 - Feeders and Main Circuit Breaker

Repairs Are Not Required



FLIR1646.jpg



78518164

Parameters

Emissivity	0.95
Distance	4.98 ft
Reflected temp.	68.0 °F
Atmospheric temp.	68.0 °F
Relative humidity	50.0%
Ext. optics temp.	68.0 °F
Ext. optics trans.	1.00

File information

File name	FLIR1646.jpg
File size	260 KB
Width	240
Height	320
Minimum temp.	84.0 °F
Maximum temp.	91.6 °F

Camera information

Camera model	FLIR E75
Lens	FOL18
Camera serial	78518164
Filter	
Range max.	248.0 °F
Range min.	-4.0 °F
Field of view	23.50

Measurements

Sp1	86.0 °F
Sp2	86.0 °F
Sp3	85.8 °F
Sp4	85.8 °F

Geolocation

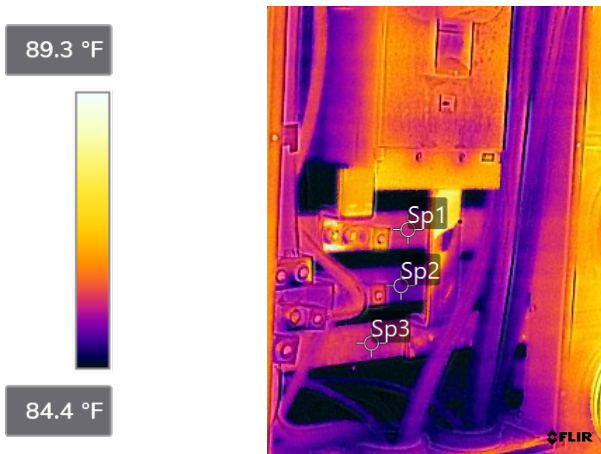
Coordinates	
Compass degrees	

Text annotations

Deficiencies were not observed at this equipment at the time of the inspection.

Building 200 - Main Electrical Room - Main Service Disconnect #2 - Main Circuit Breaker and Distribution Bar

Repairs Are Not Required



FLIR1650.jpg



78518164

Parameters

Emissivity	0.95
Distance	4.97 ft
Reflected temp.	68.0 °F
Atmospheric temp.	68.0 °F
Relative humidity	50.0%
Ext. optics temp.	68.0 °F
Ext. optics trans.	1.00

File information

File name	FLIR1650.jpg
File size	298 KB
Width	240
Height	320
Minimum temp.	83.8 °F
Maximum temp.	90.6 °F

Camera information

Camera model	FLIR E75
Lens	FOL18
Camera serial	78518164
Filter	
Range max.	248.0 °F
Range min.	-4.0 °F
Field of view	23.50

Measurements

Sp1	85.5 °F
Sp2	85.0 °F
Sp3	85.4 °F

Geolocation

Coordinates	
Compass degrees	

Text annotations

Deficiencies were not observed at this equipment at the time of the inspection.

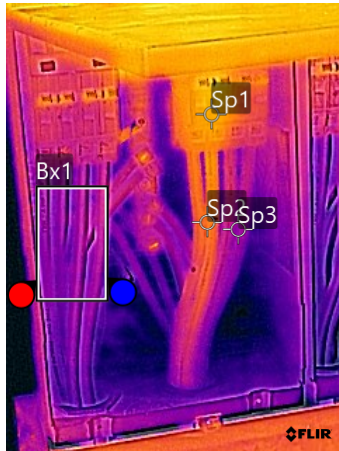
Building 200 - Main Electrical Room - Main #2 - Units' Feeders and Main Circuit Breakers

Repairs Are Not Required

88.1 °F



83.3 °F



FLIR1654.jpg



78518164

Parameters

Emissivity	0.95
Distance	3.56 ft
Reflected temp.	68.0 °F
Atmospheric temp.	68.0 °F
Relative humidity	50.0%
Ext. optics temp.	68.0 °F
Ext. optics trans.	1.00

File information

File name	FLIR1654.jpg
File size	296 KB
Width	240
Height	320
Minimum temp.	82.2 °F
Maximum temp.	86.8 °F

Camera information

Camera model	FLIR E75
Lens	FOL18
Camera serial	78518164
Filter	
Range max.	248.0 °F
Range min.	-4.0 °F
Field of view	23.50

Measurements

Bx1	
Max	84.5 °F
Avg	84.1 °F
Min	83.5 °F
Sp1	85.7 °F
Sp2	85.1 °F
Sp3	84.1 °F

Geolocation

Coordinates	
Compass degrees	

Text annotations

The minor difference in color and temperature observed in Sp1 and Sp2 is a result of the temperature measured at the time of the inspection.

Phase A: 8.5 Amp

Phase B: 9.0 Amp

Deficiencies were not observed with this equipment at the time of the inspection.

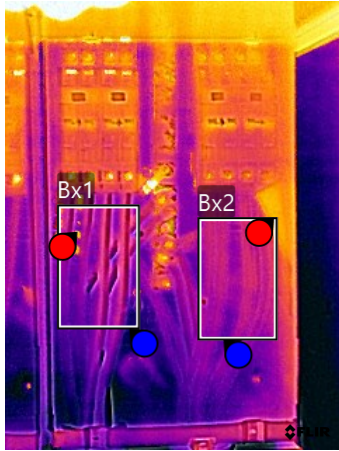
Building 200 - Main Electrical Room - Main #2 - Units' Feeders and Main Circuit Breakers

Repairs Are Not Required

88.5 °F



84.1 °F



FLIR1656.jpg



78518164

Parameters

Emissivity	0.95
Distance	3.73 ft
Reflected temp.	68.0 °F
Atmospheric temp.	68.0 °F
Relative humidity	50.0%
Ext. optics temp.	68.0 °F
Ext. optics trans.	1.00

File information

File name	FLIR1656.jpg
File size	274 KB
Width	240
Height	320
Minimum temp.	83.2 °F
Maximum temp.	94.6 °F

Camera information

Camera model	FLIR E75
Lens	FOL18
Camera serial	78518164
Filter	
Range max.	248.0 °F
Range min.	-4.0 °F
Field of view	23.50

Measurements

Bx1	
Max	87.5 °F
Avg	85.0 °F
Min	84.3 °F
Bx2	
Max	86.6 °F
Avg	85.2 °F
Min	84.6 °F

Geolocation

Coordinates	
Compass degrees	

Text annotations

Deficiencies were not observed at this equipment at the time of the inspection.

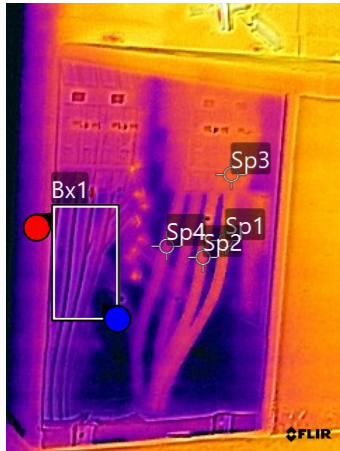
Building 200 - Main Electrical Room - Main #2 - Units' Feeders and Main Circuit Breakers

Repairs Are Not Required

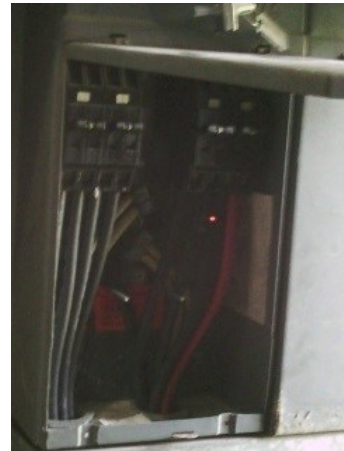
89.4 °F



84.1 °F



FLIR1658.jpg



78518164

Parameters

Emissivity	0.95
Distance	3.69 ft
Reflected temp.	68.0 °F
Atmospheric temp.	68.0 °F
Relative humidity	50.0%
Ext. optics temp.	68.0 °F
Ext. optics trans.	1.00

File information

File name	FLIR1658.jpg
File size	244 KB
Width	240
Height	320
Minimum temp.	83.4 °F
Maximum temp.	91.2 °F

Camera information

Camera model	FLIR E75
Lens	FOL18
Camera serial	78518164
Filter	
Range max.	248.0 °F
Range min.	-4.0 °F
Field of view	23.50

Measurements

Bx1	
Max	85.3 °F
Avg	84.8 °F
Min	84.2 °F
Sp1	86.0 °F
Sp2	85.7 °F
Sp3	86.0 °F
Sp4	85.3 °F

Geolocation

Coordinates	
Compass degrees	

Text annotations

The minor difference in color and temperature observed in Sp1 and Sp2 is a result of the temperature measured at the time of the inspection.

Phase A: 8.0 Amp

Phase B: 7.5 Amp

Deficiencies were not observed with this equipment at the time of the inspection.

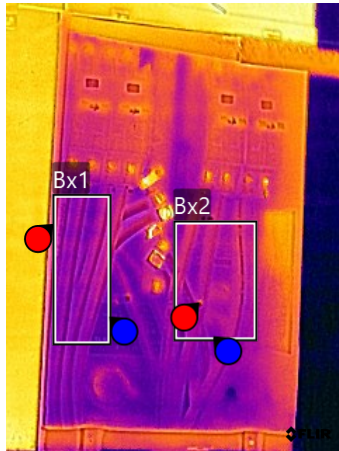
Building 200 - Main Electrical Room - Main #2 - Units' Feeders and Main Circuit Breakers

Repairs Are Not Required

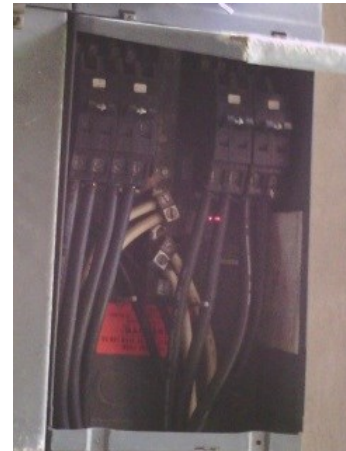
88.4 °F



83.2 °F



FLIR1660.jpg



78518164

Parameters

Emissivity	0.95
Distance	3.46 ft
Reflected temp.	68.0 °F
Atmospheric temp.	68.0 °F
Relative humidity	50.0%
Ext. optics temp.	68.0 °F
Ext. optics trans.	1.00

File information

File name	FLIR1660.jpg
File size	264 KB
Width	240
Height	320
Minimum temp.	83.1 °F
Maximum temp.	91.7 °F

Camera information

Camera model	FLIR E75
Lens	FOL18
Camera serial	78518164
Filter	
Range max.	248.0 °F
Range min.	-4.0 °F
Field of view	23.50

Measurements

Bx1	
Max	85.3 °F
Avg	84.5 °F
Min	84.1 °F
Bx2	
Max	86.2 °F
Avg	84.7 °F
Min	84.4 °F

Geolocation

Coordinates	
Compass degrees	

Text annotations

Deficiencies were not observed at this equipment at the time of the inspection.

Building 200 - Main Electrical Room - House Panel #1

Repairs Are Not Required

89.5 °F



85.9 °F



FLIR1644.jpg



78518164

Parameters

Emissivity	0.95
Distance	5.74 ft
Reflected temp.	68.0 °F
Atmospheric temp.	68.0 °F
Relative humidity	50.0%
Ext. optics temp.	68.0 °F
Ext. optics trans.	1.00

File information

File name	FLIR1644.jpg
File size	355 KB
Width	240
Height	320
Minimum temp.	83.6 °F
Maximum temp.	118.4 °F

Camera information

Camera model	FLIR E75
Lens	FOL18
Camera serial	78518164
Filter	
Range max.	248.0 °F
Range min.	-4.0 °F
Field of view	23.50

Measurements

Bx1	
Max	87.8 °F
Avg	86.5 °F
Min	85.7 °F
Sp1	86.6 °F
Sp2	86.4 °F
Sp3	86.7 °F
Sp4	86.9 °F

Geolocation

Coordinates	
Compass degrees	

Text annotations

Deficiencies were not observed at this equipment at the time of the inspection.

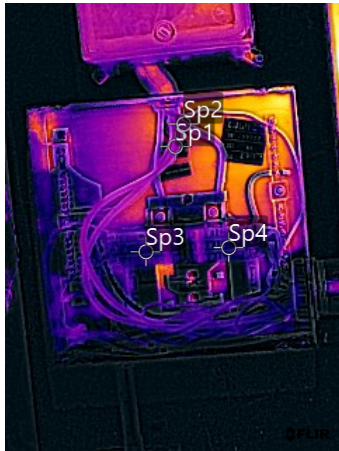
Building 200 - Main Electrical Room - House Panel #2

Repairs Are Not Required

96.4 °F



85.2 °F



FLIR1642.jpg



78518164

Parameters

Emissivity	0.95
Distance	3.73 ft
Reflected temp.	68.0 °F
Atmospheric temp.	68.0 °F
Relative humidity	50.0%
Ext. optics temp.	68.0 °F
Ext. optics trans.	1.00

File information

File name	FLIR1642.jpg
File size	361 KB
Width	240
Height	320
Minimum temp.	82.8 °F
Maximum temp.	97.5 °F

Camera information

Camera model	FLIR E75
Lens	FOL18
Camera serial	78518164
Filter	
Range max.	248.0 °F
Range min.	-4.0 °F
Field of view	23.50

Measurements

Sp1	86.2 °F
Sp2	86.1 °F
Sp3	85.4 °F
Sp4	85.4 °F

Geolocation

Coordinates	
Compass degrees	

Text annotations

Deficiencies were not observed at this equipment at the time of the inspection.

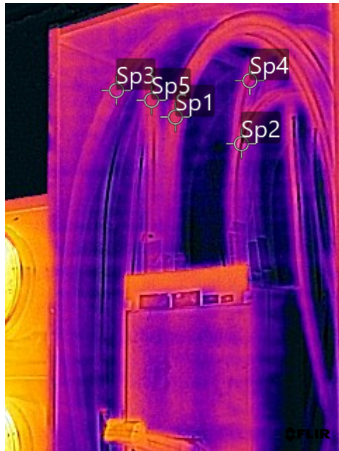
Building 300 - Main Electrical Room - Main Service Disconnect #1 - Feeders and Circuit Breakers

Repairs Are Not Required

88.5 °F



84.7 °F



FLIR1664.jpg



78518164

Parameters

Emissivity	0.95
Distance	4.74 ft
Reflected temp.	68.0 °F
Atmospheric temp.	68.0 °F
Relative humidity	50.0%
Ext. optics temp.	68.0 °F
Ext. optics trans.	1.00

File information

File name	FLIR1664.jpg
File size	268 KB
Width	240
Height	320
Minimum temp.	84.0 °F
Maximum temp.	89.0 °F

Camera information

Camera model	FLIR E75
Lens	FOL18
Camera serial	78518164
Filter	
Range max.	248.0 °F
Range min.	-4.0 °F
Field of view	23.50

Measurements

Sp1	85.5 °F
Sp2	85.4 °F
Sp3	85.4 °F
Sp4	85.4 °F
Sp5	85.5 °F

Geolocation

Coordinates	
Compass degrees	

Text annotations

Deficiencies were not observed at this equipment at the time of the inspection.

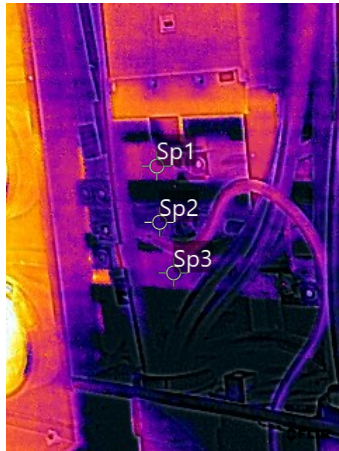
Building 300 - Main Electrical Room - Main Service Disconnect #1 - Circuit Breakers and Distribution Bars

Repairs Are Not Required

86.8 °F



83.7 °F



FLIR1666.jpg



78518164

Parameters

Emissivity	0.95
Distance	4.39 ft
Reflected temp.	68.0 °F
Atmospheric temp.	68.0 °F
Relative humidity	50.0%
Ext. optics temp.	68.0 °F
Ext. optics trans.	1.00

File information

File name	FLIR1666.jpg
File size	306 KB
Width	240
Height	320
Minimum temp.	82.1 °F
Maximum temp.	89.2 °F

Camera information

Camera model	FLIR E75
Lens	FOL18
Camera serial	78518164
Filter	
Range max.	248.0 °F
Range min.	-4.0 °F
Field of view	23.50

Measurements

Sp1	84.5 °F
Sp2	84.0 °F
Sp3	84.1 °F

Geolocation

Coordinates	
Compass degrees	

Text annotations

Deficiencies were not observed at this equipment at the time of the inspection.

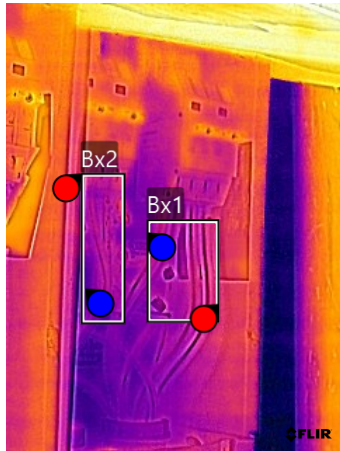
Building 300 - Main Electrical Room - Main #1 - Units' Feeders and Main Circuit Breakers

Repairs Are Not Required

87.1 °F



83.1 °F



FLIR1672.jpg



78518164

Parameters

Emissivity	0.95
Distance	3.63 ft
Reflected temp.	68.0 °F
Atmospheric temp.	68.0 °F
Relative humidity	50.0%
Ext. optics temp.	68.0 °F
Ext. optics trans.	1.00

File information

File name	FLIR1672.jpg
File size	273 KB
Width	240
Height	320
Minimum temp.	83.2 °F
Maximum temp.	86.9 °F

Camera information

Camera model	FLIR E75
Lens	FOL18
Camera serial	78518164
Filter	
Range max.	248.0 °F
Range min.	-4.0 °F
Field of view	23.50

Measurements

Bx1	
Max	84.6 °F
Avg	84.3 °F
Min	84.0 °F
Bx2	
Max	84.6 °F
Avg	84.2 °F
Min	83.7 °F

Geolocation

Coordinates	
Compass degrees	

Text annotations

Deficiencies were not observed at this equipment at the time of the inspection.

Building 300 - Main Electrical Room - Main #1 - Units' Feeders and Main Circuit Breakers

Repairs Are Not Required

86.9 °F



83.8 °F



FLIR1674.jpg



78518164

Parameters

Emissivity	0.95
Distance	3.42 ft
Reflected temp.	68.0 °F
Atmospheric temp.	68.0 °F
Relative humidity	50.0%
Ext. optics temp.	68.0 °F
Ext. optics trans.	1.00

File information

File name	FLIR1674.jpg
File size	274 KB
Width	240
Height	320
Minimum temp.	82.4 °F
Maximum temp.	88.4 °F

Camera information

Camera model	FLIR E75
Lens	FOL18
Camera serial	78518164
Filter	
Range max.	248.0 °F
Range min.	-4.0 °F
Field of view	23.50

Measurements

Sp1	84.5 °F
Sp2	84.5 °F
Sp3	84.4 °F
Sp4	84.5 °F
Sp5	84.3 °F
Sp6	84.4 °F
Sp7	84.6 °F
Sp8	84.6 °F

Geolocation

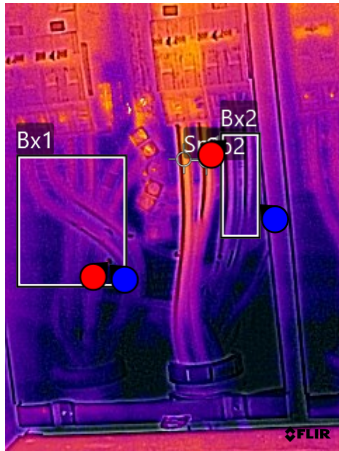
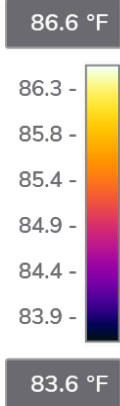
Coordinates	
Compass degrees	

Text annotations

Deficiencies were not observed at this equipment at the time of the inspection.

Building 300 - Main Electrical Room - Main #1 - Units' Feeders and Main Circuit Breakers

Repairs Are Not Required



FLIR1676.jpg



78518164

Parameters

Emissivity	0.95
Distance	3.20 ft
Reflected temp.	68.0 °F
Atmospheric temp.	68.0 °F
Relative humidity	50.0%
Ext. optics temp.	68.0 °F
Ext. optics trans.	1.00

File information

File name	FLIR1676.jpg
File size	268 KB
Width	240
Height	320
Minimum temp.	82.8 °F
Maximum temp.	90.9 °F

Camera information

Camera model	FLIR E75
Lens	FOL18
Camera serial	78518164
Filter	
Range max.	248.0 °F
Range min.	-4.0 °F
Field of view	23.50

Measurements

Bx1	
Max	85.6 °F
Avg	84.2 °F
Min	83.6 °F
Bx2	
Max	84.6 °F
Avg	84.2 °F
Min	83.9 °F
Dt1	
Sp1-Bx2.Max	0.8 °F
Dt2	
Sp2-Bx2.Max	0.7 °F
Sp1	85.4 °F
Sp2	85.3 °F

Geolocation

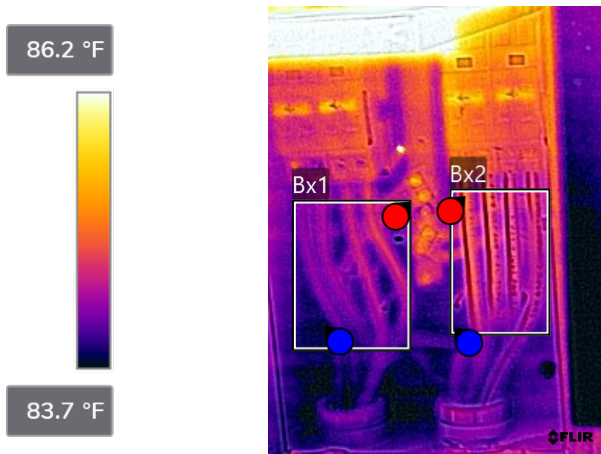
Coordinates	
Compass degrees	

Text annotations

The minor difference in color and temperature observed in Sp1 and Sp2 is a result of the temperature measured at the time of the inspection.
Phase A: 15.2 Amp
Phase B: 12 Amp
Deficiencies were not observed with this equipment at the time of the inspection.

Building 300 - Main Electrical Room - Main #1 - Units' Feeders and Main Circuit Breakers

Repairs Are Not Required



FLIR1682.jpg



78518164

Parameters

Emissivity	0.95
Distance	3.03 ft
Reflected temp.	68.0 °F
Atmospheric temp.	68.0 °F
Relative humidity	50.0%
Ext. optics temp.	68.0 °F
Ext. optics trans.	1.00

File information

File name	FLIR1682.jpg
File size	252 KB
Width	240
Height	320
Minimum temp.	83.2 °F
Maximum temp.	91.1 °F

Camera information

Camera model	FLIR E75
Lens	FOL18
Camera serial	78518164
Filter	
Range max.	248.0 °F
Range min.	-4.0 °F
Field of view	23.50

Measurements

Bx1	
Max	84.7 °F
Avg	84.1 °F
Min	83.7 °F
Bx2	
Max	84.9 °F
Avg	84.4 °F
Min	83.8 °F

Geolocation

Coordinates	
Compass degrees	

Text annotations

Deficiencies were not observed at this equipment at the time of the inspection.

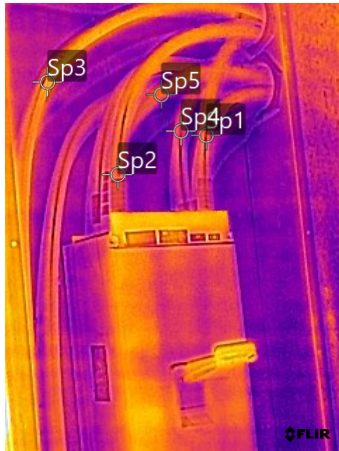
Building 300 - Main Electrical Room - Main Service Disconnect #2 - Feeders and Circuit Breakers

Repairs Are Not Required

87.3 °F



84.5 °F



FLIR1694.jpg



78518164

Parameters

Emissivity	0.95
Distance	4.84 ft
Reflected temp.	68.0 °F
Atmospheric temp.	68.0 °F
Relative humidity	50.0%
Ext. optics temp.	68.0 °F
Ext. optics trans.	1.00

File information

File name	FLIR1694.jpg
File size	276 KB
Width	240
Height	320
Minimum temp.	84.9 °F
Maximum temp.	89.7 °F

Camera information

Camera model	FLIR E75
Lens	FOL18
Camera serial	78518164
Filter	
Range max.	248.0 °F
Range min.	-4.0 °F
Field of view	23.50

Measurements

Sp1	85.8 °F
Sp2	85.8 °F
Sp3	86.0 °F
Sp4	85.7 °F
Sp5	85.8 °F

Geolocation

Coordinates	
Compass degrees	

Text annotations

Deficiencies were not observed at this equipment at the time of the inspection.

Building 300 - Main Electrical Room - Main Service Disconnect #2 - Circuit Breakers and Distribution Bars

Repairs Are Not Required

93.3 °F



84.7 °F



FLIR1696.jpg



78518164

Parameters

Emissivity	0.95
Distance	5.12 ft
Reflected temp.	68.0 °F
Atmospheric temp.	68.0 °F
Relative humidity	50.0%
Ext. optics temp.	68.0 °F
Ext. optics trans.	1.00

File information

File name	FLIR1696.jpg
File size	257 KB
Width	240
Height	320
Minimum temp.	83.3 °F
Maximum temp.	92.9 °F

Camera information

Camera model	FLIR E75
Lens	FOL18
Camera serial	78518164
Filter	
Range max.	248.0 °F
Range min.	-4.0 °F
Field of view	23.50

Measurements

Sp1	85.7 °F
Sp2	85.2 °F
Sp3	85.8 °F
Sp4	86.4 °F

Geolocation

Coordinates	
Compass degrees	

Text annotations

Deficiencies were not observed at this equipment at the time of the inspection.

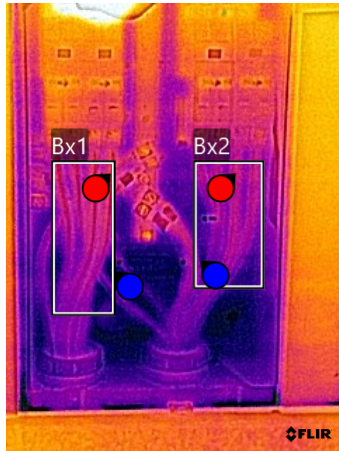
Building 300 - Main Electrical Room - Main #2 - Units' Feeders and Main Circuit Breakers

Repairs Are Not Required

88.8 °F



83.1 °F



FLIR1700.jpg



78518164

Parameters

Emissivity	0.95
Distance	3.71 ft
Reflected temp.	68.0 °F
Atmospheric temp.	68.0 °F
Relative humidity	50.0%
Ext. optics temp.	68.0 °F
Ext. optics trans.	1.00

File information

File name	FLIR1700.jpg
File size	263 KB
Width	240
Height	320
Minimum temp.	82.4 °F
Maximum temp.	95.6 °F

Camera information

Camera model	FLIR E75
Lens	FOL18
Camera serial	78518164
Filter	
Range max.	248.0 °F
Range min.	-4.0 °F
Field of view	23.50

Measurements

Bx1	
Max	84.5 °F
Avg	84.0 °F
Min	83.2 °F
Bx2	
Max	84.3 °F
Avg	83.9 °F
Min	83.4 °F

Geolocation

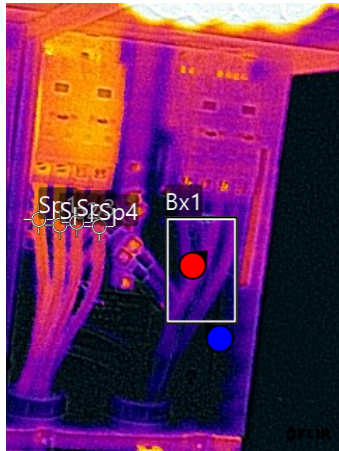
Coordinates	
Compass degrees	

Text annotations

Deficiencies were not observed at this equipment at the time of the inspection.

Building 300 - Main Electrical Room - Main #2 - Units' Feeders and Main Circuit Breakers

Repairs Are Not Required



FLIR1702.jpg



78518164

Parameters

Emissivity	0.95
Distance	3.47 ft
Reflected temp.	68.0 °F
Atmospheric temp.	68.0 °F
Relative humidity	50.0%
Ext. optics temp.	68.0 °F
Ext. optics trans.	1.00

File information

File name	FLIR1702.jpg
File size	285 KB
Width	240
Height	320
Minimum temp.	83.3 °F
Maximum temp.	94.9 °F

Camera information

Camera model	FLIR E75
Lens	FOL18
Camera serial	78518164
Filter	
Range max.	248.0 °F
Range min.	-4.0 °F
Field of view	23.50

Measurements

Bx1	
Max	85.1 °F
Avg	84.7 °F
Min	84.3 °F
Sp1	86.2 °F
Sp2	86.1 °F
Sp3	85.9 °F
Sp4	85.6 °F

Geolocation

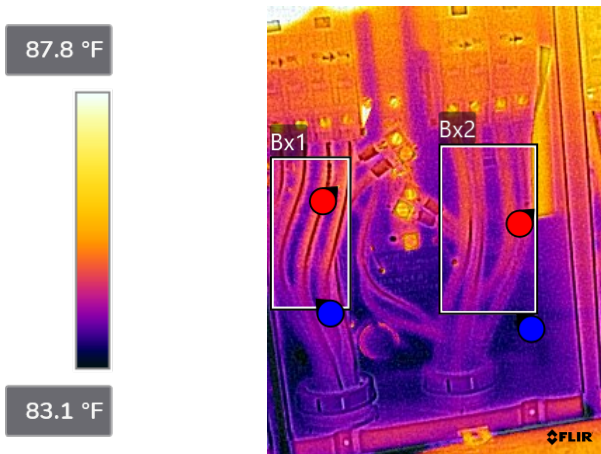
Coordinates	
Compass degrees	

Text annotations

The minor difference in color and temperature observed in Sp1, Sp2, Sp3, and Sp4 is a result of the temperature measured at the time of the inspection.
The temperature in phases was observed between 2A and 5A.
Deficiencies were not observed with this equipment at the time of the inspection.

Building 300 - Main Electrical Room - Main #2 - Units' Feeders and Main Circuit Breakers

Repairs Are Not Required



FLIR1706.jpg



78518164

Parameters

Emissivity	0.95
Distance	3.13 ft
Reflected temp.	68.0 °F
Atmospheric temp.	68.0 °F
Relative humidity	50.0%
Ext. optics temp.	68.0 °F
Ext. optics trans.	1.00

File information

File name	FLIR1706.jpg
File size	319 KB
Width	240
Height	320
Minimum temp.	82.3 °F
Maximum temp.	94.0 °F

Camera information

Camera model	FLIR E75
Lens	FOL18
Camera serial	78518164
Filter	
Range max.	248.0 °F
Range min.	-4.0 °F
Field of view	23.50

Measurements

Bx1	
Max	86.9 °F
Avg	84.3 °F
Min	83.3 °F
Bx2	
Max	86.0 °F
Avg	84.2 °F
Min	83.3 °F

Geolocation

Coordinates	
Compass degrees	

Text annotations

Deficiencies were not observed at this equipment at the time of the inspection.

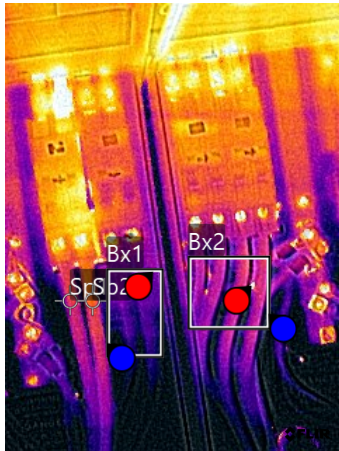
Building 300 - Main Electrical Room - Main #2 - Units' Feeders and Main Circuit Breakers

Repairs Are Not Required

86.3 °F



84.1 °F



FLIR1708.jpg



78518164

Parameters

Emissivity	0.95
Distance	2.82 ft
Reflected temp.	68.0 °F
Atmospheric temp.	68.0 °F
Relative humidity	50.0%
Ext. optics temp.	68.0 °F
Ext. optics trans.	1.00

File information

File name	FLIR1708.jpg
File size	335 KB
Width	240
Height	320
Minimum temp.	82.9 °F
Maximum temp.	89.8 °F

Camera information

Camera model	FLIR E75
Lens	FOL18
Camera serial	78518164
Filter	
Range max.	248.0 °F
Range min.	-4.0 °F
Field of view	23.50

Measurements

Bx1	
Max	85.0 °F
Avg	84.4 °F
Min	83.8 °F
Bx2	
Max	88.1 °F
Avg	84.7 °F
Min	83.7 °F
Sp1	
Max	85.1 °F
Sp2	
Max	85.4 °F

Geolocation

Coordinates	
Compass degrees	

Text annotations

The minor difference in color and temperature observed in Sp1 and Sp2 is a result of the temperature measured at the time of the inspection.

Phase A: 4 Amp

Phase B: 3 Amp

Deficiencies were not observed with this equipment at the time of the inspection.

Building 300 - Main Electrical Room - House Panel #1

Minor Repair is Required

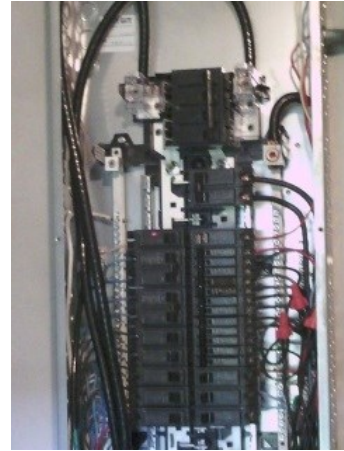
94.2 °F



85.4 °F



FLIR1688.jpg



78518164

Parameters

Emissivity	0.95
Distance	4.87 ft
Reflected temp.	68.0 °F
Atmospheric temp.	68.0 °F
Relative humidity	50.0%
Ext. optics temp.	68.0 °F
Ext. optics trans.	1.00

File information

File name	FLIR1688.jpg
File size	311 KB
Width	240
Height	320
Minimum temp.	83.9 °F
Maximum temp.	105.5 °F

Camera information

Camera model	FLIR E75
Lens	FOL18
Camera serial	78518164
Filter	
Range max.	248.0 °F
Range min.	-4.0 °F
Field of view	23.50

Measurements

Bx1	
Max	103.8 °F
Avg	90.0 °F
Min	86.6 °F
Sp1	97.6 °F
Sp2	86.4 °F
Sp3	86.7 °F

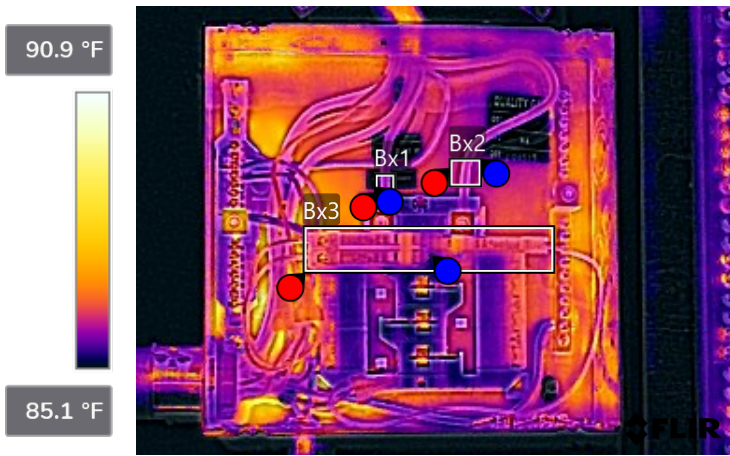
Geolocation

Coordinates	
Compass degrees	

Text annotations

Minor Repair Needed.
 The observed temperature in the breaker and wire is a result of the high consumption measured in this circuit at the time of the inspection (18.4A). This consumption is 90% of the breaker's rating; therefore, some of the loads connected at this circuit breaker shall be transferred to another 240V circuit, or the circuit breaker and wires shall be increased.

Repairs Are Not Required



FLIR1690.jpg



78518164

Parameters

Emissivity	0.95
Distance	3.49 ft
Reflected temp.	68.0 °F
Atmospheric temp.	68.0 °F
Relative humidity	50.0%
Ext. optics temp.	68.0 °F
Ext. optics trans.	1.00

File information

File name	FLIR1690.jpg
File size	366 KB
Width	320
Height	240
Minimum temp.	83.9 °F
Maximum temp.	90.5 °F

Camera information

Camera model	FLIR E75
Lens	FOL18
Camera serial	78518164
Filter	
Range max.	248.0 °F
Range min.	-4.0 °F
Field of view	23.50

Measurements

Bx1	
Max	86.3 °F
Avg	85.6 °F
Min	84.9 °F
Bx2	
Max	86.1 °F
Avg	86.0 °F
Min	85.9 °F
Bx3	
Max	87.8 °F
Avg	86.1 °F
Min	85.1 °F

Geolocation

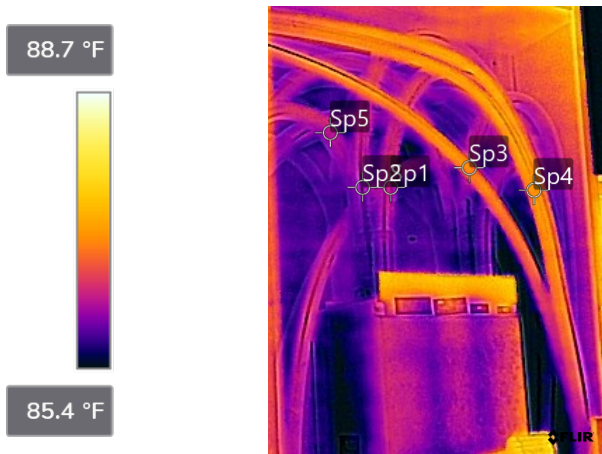
Coordinates	
Compass degrees	

Text annotations

Deficiencies were not observed at this equipment at the time of the inspection.

Building 400 - Main Electrical Room - Main Service Disconnect #1 - Feeders and Circuit Breakers

Repairs Are Not Required



FLIR1710.jpg



78518164

Parameters

Emissivity	0.95
Distance	4.62 ft
Reflected temp.	68.0 °F
Atmospheric temp.	68.0 °F
Relative humidity	50.0%
Ext. optics temp.	68.0 °F
Ext. optics trans.	1.00

File information

File name	FLIR1710.jpg
File size	274 KB
Width	240
Height	320
Minimum temp.	84.8 °F
Maximum temp.	87.8 °F

Camera information

Camera model	FLIR E75
Lens	FOL18
Camera serial	78518164
Filter	
Range max.	248.0 °F
Range min.	-4.0 °F
Field of view	23.50

Measurements

Sp1	86.2 °F
Sp2	86.1 °F
Sp3	86.9 °F
Sp4	87.0 °F
Sp5	86.2 °F

Geolocation

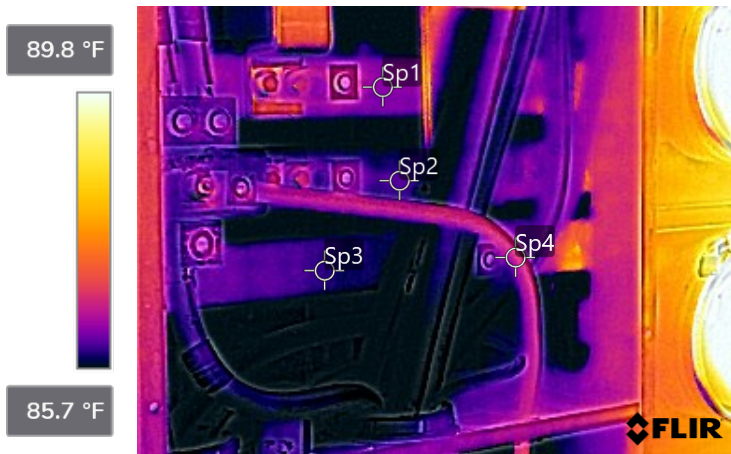
Coordinates	
Compass degrees	

Text annotations

Deficiencies were not observed at this equipment at the time of the inspection.

Building 400 - Main Electrical Room - Main Service Disconnect #1 - Circuit Breakers and Distribution Bars

Repairs Are Not Required



FLIR1712.jpg



78518164

Parameters

Emissivity	0.95
Distance	3.92 ft
Reflected temp.	68.0 °F
Atmospheric temp.	68.0 °F
Relative humidity	50.0%
Ext. optics temp.	68.0 °F
Ext. optics trans.	1.00

File information

File name	FLIR1712.jpg
File size	281 KB
Width	320
Height	240
Minimum temp.	84.8 °F
Maximum temp.	95.1 °F

Camera information

Camera model	FLIR E75
Lens	FOL18
Camera serial	78518164
Filter	
Range max.	248.0 °F
Range min.	-4.0 °F
Field of view	23.50

Measurements

Sp1	86.2 °F
Sp2	86.0 °F
Sp3	85.9 °F
Sp4	86.6 °F

Geolocation

Coordinates	
Compass degrees	

Text annotations

Deficiencies were not observed at this equipment at the time of the inspection.

Building 400 - Main Electrical Room - Main Service Disconnect #1 - Circuit Breaker

Repairs Are Not Required

92.8 °F



85.1 °F



FLIR1714.jpg



78518164

Parameters

Emissivity	0.95
Distance	4.44 ft
Reflected temp.	68.0 °F
Atmospheric temp.	68.0 °F
Relative humidity	50.0%
Ext. optics temp.	68.0 °F
Ext. optics trans.	1.00

File information

File name	FLIR1714.jpg
File size	277 KB
Width	240
Height	320
Minimum temp.	85.1 °F
Maximum temp.	96.3 °F

Camera information

Camera model	FLIR E75
Lens	FOL18
Camera serial	78518164
Filter	
Range max.	248.0 °F
Range min.	-4.0 °F
Field of view	23.50

Measurements

Bx1	
Max	88.2 °F
Avg	86.4 °F
Min	85.3 °F

Geolocation

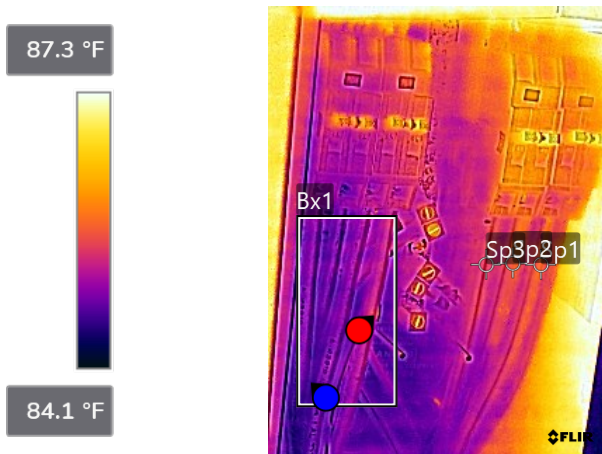
Coordinates	
Compass degrees	

Text annotations

Deficiencies were not observed at this equipment at the time of the inspection.

Building 400 - Main Electrical Room - Main #1 - Units' Feeders and Main Circuit Breakers

Repairs Are Not Required



FLIR1716.jpg



78518164

Parameters

Emissivity	0.95
Distance	2.80 ft
Reflected temp.	68.0 °F
Atmospheric temp.	68.0 °F
Relative humidity	50.0%
Ext. optics temp.	68.0 °F
Ext. optics trans.	1.00

File information

File name	FLIR1716.jpg
File size	296 KB
Width	240
Height	320
Minimum temp.	84.2 °F
Maximum temp.	87.7 °F

Camera information

Camera model	FLIR E75
Lens	FOL18
Camera serial	78518164
Filter	
Range max.	248.0 °F
Range min.	-4.0 °F
Field of view	23.50

Measurements

Bx1	
Max	85.6 °F
Avg	84.9 °F
Min	84.5 °F
Sp1	85.8 °F
Sp2	85.7 °F
Sp3	85.5 °F

Geolocation

Coordinates	
Compass degrees	

Text annotations

Deficiencies were not observed at this equipment at the time of the inspection.

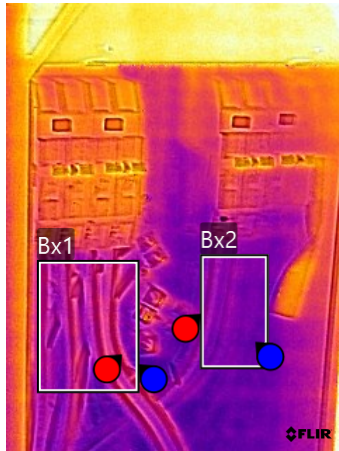
Building 400 - Main Electrical Room - Main #1 - Units' Feeders and Main Circuit Breakers

Repairs Are Not Required

87.0 °F



83.5 °F



FLIR1718.jpg



78518164

Parameters

Emissivity	0.95
Distance	2.68 ft
Reflected temp.	68.0 °F
Atmospheric temp.	68.0 °F
Relative humidity	50.0%
Ext. optics temp.	68.0 °F
Ext. optics trans.	1.00

File information

File name	FLIR1718.jpg
File size	253 KB
Width	240
Height	320
Minimum temp.	84.2 °F
Maximum temp.	87.4 °F

Camera information

Camera model	FLIR E75
Lens	FOL18
Camera serial	78518164
Filter	
Range max.	248.0 °F
Range min.	-4.0 °F
Field of view	23.50

Measurements

Bx1	
Max	85.1 °F
Avg	84.8 °F
Min	84.3 °F
Bx2	
Max	84.7 °F
Avg	84.5 °F
Min	84.4 °F

Geolocation

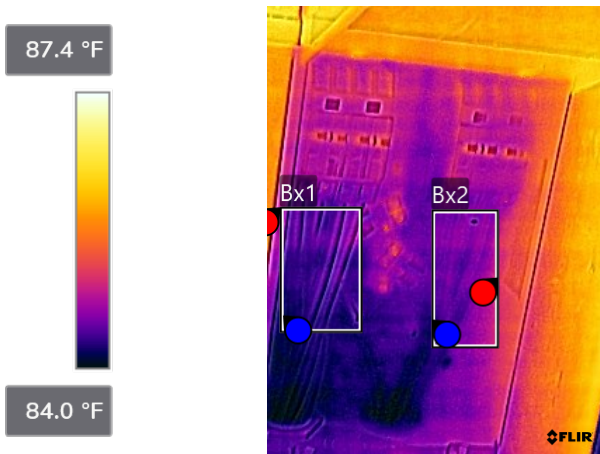
Coordinates	
Compass degrees	

Text annotations

Deficiencies were not observed at this equipment at the time of the inspection.

Building 400 - Main Electrical Room - Main #1 - Units' Feeders and Main Circuit Breakers

Repairs Are Not Required



FLIR1720.jpg



78518164

Parameters

Emissivity	0.95
Distance	3.61 ft
Reflected temp.	68.0 °F
Atmospheric temp.	68.0 °F
Relative humidity	50.0%
Ext. optics temp.	68.0 °F
Ext. optics trans.	1.00

File information

File name	FLIR1720.jpg
File size	253 KB
Width	240
Height	320
Minimum temp.	84.0 °F
Maximum temp.	86.6 °F

Camera information

Camera model	FLIR E75
Lens	FOL18
Camera serial	78518164
Filter	
Range max.	248.0 °F
Range min.	-4.0 °F
Field of view	23.50

Measurements

Bx1	
Max	84.9 °F
Avg	84.4 °F
Min	84.1 °F
Bx2	
Max	85.2 °F
Avg	84.7 °F
Min	84.2 °F

Geolocation

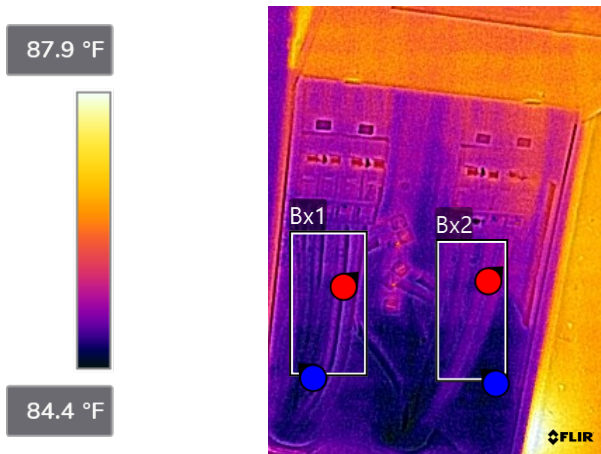
Coordinates	
Compass degrees	

Text annotations

Deficiencies were not observed at this equipment at the time of the inspection.

Building 400 - Main Electrical Room - Main #1 - Units' Feeders and Main Circuit Breakers

Repairs Are Not Required



FLIR1722.jpg



78518164

Parameters

Emissivity	0.95
Distance	3.21 ft
Reflected temp.	68.0 °F
Atmospheric temp.	68.0 °F
Relative humidity	50.0%
Ext. optics temp.	68.0 °F
Ext. optics trans.	1.00

File information

File name	FLIR1722.jpg
File size	286 KB
Width	240
Height	320
Minimum temp.	84.3 °F
Maximum temp.	88.0 °F

Camera information

Camera model	FLIR E75
Lens	FOL18
Camera serial	78518164
Filter	
Range max.	248.0 °F
Range min.	-4.0 °F
Field of view	23.50

Measurements

Bx1	
Max	85.0 °F
Avg	84.8 °F
Min	84.6 °F
Bx2	
Max	85.2 °F
Avg	84.8 °F
Min	84.5 °F

Geolocation

Coordinates	
Compass degrees	

Text annotations

Deficiencies were not observed at this equipment at the time of the inspection.

Building 400 - Main Electrical Room - Main Service Disconnect #2 - Feeders and Circuit Breaker

Repairs Are Not Required

88.5 °F



84.9 °F



FLIR1724.jpg



78518164

Parameters

Emissivity	0.95
Distance	4.09 ft
Reflected temp.	68.0 °F
Atmospheric temp.	68.0 °F
Relative humidity	50.0%
Ext. optics temp.	68.0 °F
Ext. optics trans.	1.00

File information

File name	FLIR1724.jpg
File size	254 KB
Width	240
Height	320
Minimum temp.	84.4 °F
Maximum temp.	88.5 °F

Camera information

Camera model	FLIR E75
Lens	FOL18
Camera serial	78518164
Filter	
Range max.	248.0 °F
Range min.	-4.0 °F
Field of view	23.50

Measurements

Sp1	86.4 °F
Sp2	86.5 °F
Sp3	86.7 °F
Sp4	86.1 °F
Sp5	86.2 °F
Sp6	86.2 °F

Geolocation

Coordinates	
Compass degrees	

Text annotations

Deficiencies were not observed at this equipment at the time of the inspection.

Building 400 - Main Electrical Room - Main Service Disconnect #2 - Circuit Breaker and Distribution Bar

Repairs Are Not Required

92.1 °F



84.8 °F



FLIR1726.jpg



78518164

Parameters

Emissivity	0.95
Distance	4.40 ft
Reflected temp.	68.0 °F
Atmospheric temp.	68.0 °F
Relative humidity	50.0%
Ext. optics temp.	68.0 °F
Ext. optics trans.	1.00

File information

File name	FLIR1726.jpg
File size	274 KB
Width	240
Height	320
Minimum temp.	84.1 °F
Maximum temp.	91.9 °F

Camera information

Camera model	FLIR E75
Lens	FOL18
Camera serial	78518164
Filter	
Range max.	248.0 °F
Range min.	-4.0 °F
Field of view	23.50

Measurements

Sp1	86.1 °F
Sp2	85.6 °F
Sp3	85.7 °F

Geolocation

Coordinates	
Compass degrees	

Text annotations

Deficiencies were not observed at this equipment at the time of the inspection.

Building 400 - Main Electrical Room - Main Service Disconnect #2 - Circuit Breaker

Repairs Are Not Required

91.5 °F



84.1 °F



FLIR1728.jpg



78518164

Parameters

Emissivity	0.95
Distance	3.69 ft
Reflected temp.	68.0 °F
Atmospheric temp.	68.0 °F
Relative humidity	50.0%
Ext. optics temp.	68.0 °F
Ext. optics trans.	1.00

File information

File name	FLIR1728.jpg
File size	259 KB
Width	240
Height	320
Minimum temp.	85.1 °F
Maximum temp.	90.0 °F

Camera information

Camera model	FLIR E75
Lens	FOL18
Camera serial	78518164
Filter	
Range max.	248.0 °F
Range min.	-4.0 °F
Field of view	23.50

Measurements

Bx1	
Max	90.0 °F
Avg	86.3 °F
Min	85.1 °F

Geolocation

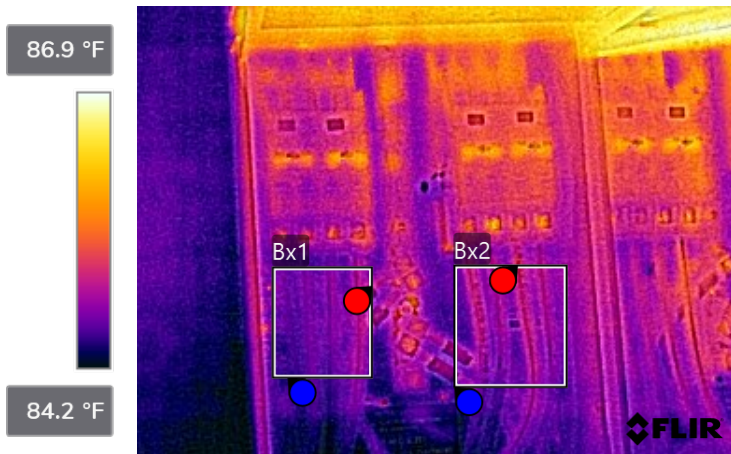
Coordinates	
Compass degrees	

Text annotations

Deficiencies were not observed at this equipment at the time of the inspection.

Building 400 - Main Electrical Room - Main #2 - Units' Feeders and Main Circuit Breakers

Repairs Are Not Required



FLIR1730.jpg



78518164

Parameters

Emissivity	0.95
Distance	3.72 ft
Reflected temp.	68.0 °F
Atmospheric temp.	68.0 °F
Relative humidity	50.0%
Ext. optics temp.	68.0 °F
Ext. optics trans.	1.00

File information

File name	FLIR1730.jpg
File size	314 KB
Width	320
Height	240
Minimum temp.	84.1 °F
Maximum temp.	86.8 °F

Camera information

Camera model	FLIR E75
Lens	FOL18
Camera serial	78518164
Filter	
Range max.	248.0 °F
Range min.	-4.0 °F
Field of view	23.50

Measurements

Bx1	
Max	85.0 °F
Avg	84.7 °F
Min	84.4 °F
Bx2	
Max	85.2 °F
Avg	84.8 °F
Min	84.5 °F

Geolocation

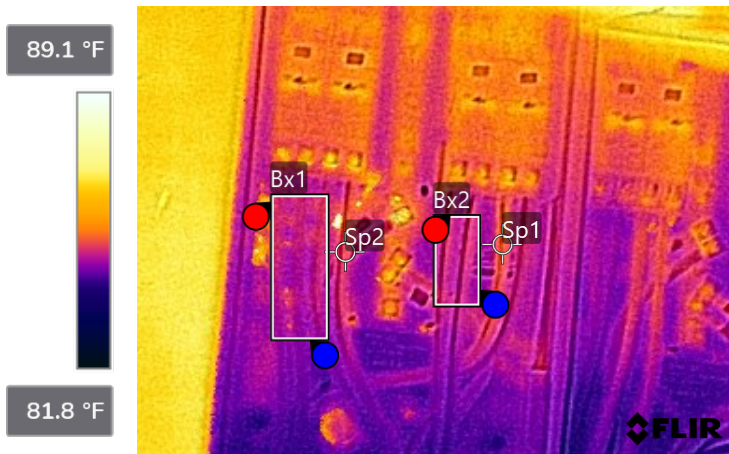
Coordinates	
Compass degrees	

Text annotations

Deficiencies were not observed at this equipment at the time of the inspection.

Building 400 - Main Electrical Room - Main #2 - Units' Feeders and Main Circuit Breakers

Repairs Are Not Required



FLIR1732.jpg



78518164

Parameters

Emissivity	0.95
Distance	3.95 ft
Reflected temp.	68.0 °F
Atmospheric temp.	68.0 °F
Relative humidity	50.0%
Ext. optics temp.	68.0 °F
Ext. optics trans.	1.00

File information

File name	FLIR1732.jpg
File size	312 KB
Width	320
Height	240
Minimum temp.	83.9 °F
Maximum temp.	94.6 °F

Camera information

Camera model	FLIR E75
Lens	FOL18
Camera serial	78518164
Filter	
Range max.	248.0 °F
Range min.	-4.0 °F
Field of view	23.50

Measurements

Bx1	
Max	85.8 °F
Avg	84.8 °F
Min	84.5 °F
Bx2	
Max	85.0 °F
Avg	84.8 °F
Min	84.6 °F
Sp1	85.3 °F
Sp2	85.1 °F

Geolocation

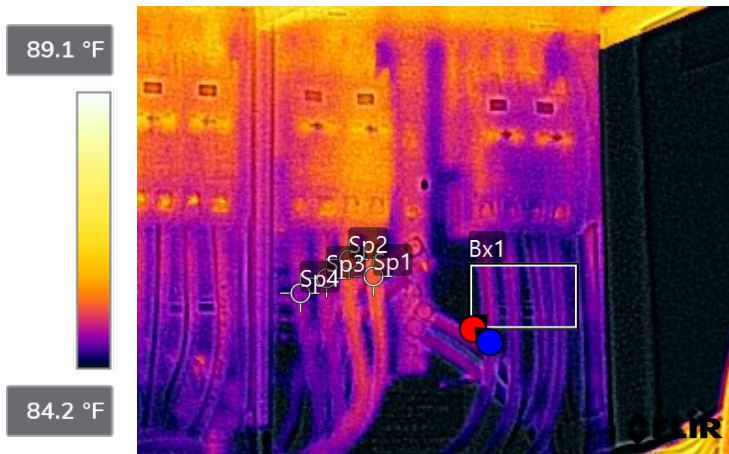
Coordinates	
Compass degrees	

Text annotations

Deficiencies were not observed at this equipment at the time of the inspection.

Building 400 - Main Electrical Room - Main #2 - Units' Feeders and Main Circuit Breakers

Repairs Are Not Required



FLIR1736.jpg



78518164

Parameters

Emissivity	0.95
Distance	3.73 ft
Reflected temp.	68.0 °F
Atmospheric temp.	68.0 °F
Relative humidity	50.0%
Ext. optics temp.	68.0 °F
Ext. optics trans.	1.00

File information

File name	FLIR1736.jpg
File size	308 KB
Width	320
Height	240
Minimum temp.	82.4 °F
Maximum temp.	86.7 °F

Camera information

Camera model	FLIR E75
Lens	FOL18
Camera serial	78518164
Filter	
Range max.	248.0 °F
Range min.	-4.0 °F
Field of view	23.50

Measurements

Bx1	
Max	84.8 °F
Avg	84.5 °F
Min	84.1 °F
Sp1	85.3 °F
Sp2	85.3 °F
Sp3	84.9 °F
Sp4	84.7 °F

Geolocation

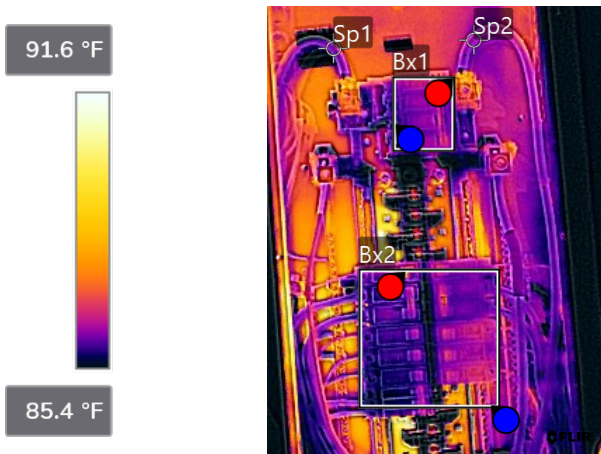
Coordinates	
Compass degrees	

Text annotations

Deficiencies were not observed at this equipment at the time of the inspection.

Building 400 - Main Electrical Room - House Panel #1

Repairs Are Not Required



FLIR1740.jpg



78518164

Parameters

Emissivity	0.95
Distance	4.50 ft
Reflected temp.	68.0 °F
Atmospheric temp.	68.0 °F
Relative humidity	50.0%
Ext. optics temp.	68.0 °F
Ext. optics trans.	1.00

File information

File name	FLIR1740.jpg
File size	351 KB
Width	240
Height	320
Minimum temp.	83.4 °F
Maximum temp.	92.1 °F

Camera information

Camera model	FLIR E75
Lens	FOL18
Camera serial	78518164
Filter	
Range max.	248.0 °F
Range min.	-4.0 °F
Field of view	23.50

Measurements

Bx1	
Max	87.6 °F
Avg	86.2 °F
Min	85.2 °F
Bx2	
Max	90.5 °F
Avg	86.1 °F
Min	83.9 °F
Sp1	86.2 °F
Sp2	86.2 °F

Geolocation

Coordinates	
Compass degrees	

Text annotations

Deficiencies were not observed at this equipment at the time of the inspection.

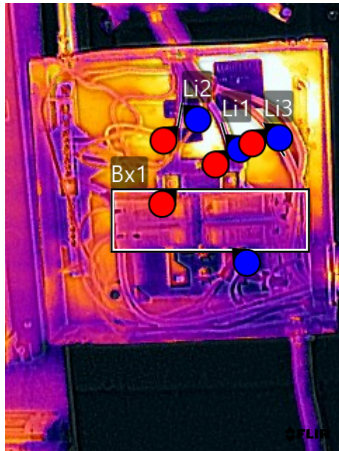
Building 400 - Main Electrical Room - House Panel #2

Repairs Are Not Required

89.3 °F



84.6 °F



FLIR1738.jpg



78518164

Parameters

Emissivity	0.95
Distance	3.39 ft
Reflected temp.	68.0 °F
Atmospheric temp.	68.0 °F
Relative humidity	50.0%
Ext. optics temp.	68.0 °F
Ext. optics trans.	1.00

File information

File name	FLIR1738.jpg
File size	336 KB
Width	240
Height	320
Minimum temp.	83.4 °F
Maximum temp.	92.0 °F

Camera information

Camera model	FLIR E75
Lens	FOL18
Camera serial	78518164
Filter	
Range max.	248.0 °F
Range min.	-4.0 °F
Field of view	23.50

Measurements

Bx1	
Max	87.8 °F
Avg	86.0 °F
Min	84.5 °F
Li1	
Max	86.2 °F
Avg	85.9 °F
Min	85.6 °F
Li2	
Max	86.3 °F
Avg	85.7 °F
Min	85.3 °F
Li3	
Max	86.7 °F
Avg	86.5 °F
Min	86.4 °F

Geolocation

Coordinates	
Compass degrees	

Text annotations

Deficiencies were not observed at this equipment at the time of the inspection.

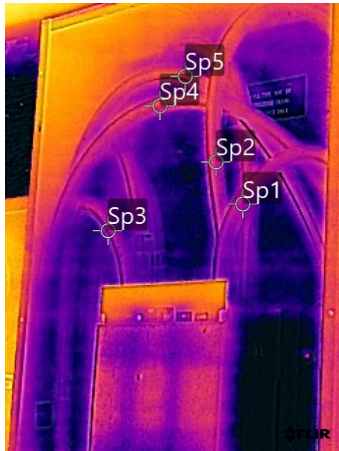
Building 500 - Main Electrical Room - Main Service Disconnect #1 - Feeders and Circuit Breaker

Repairs Are Not Required

91.6 °F



86.9 °F



FLIR1742.jpg



78518164

Parameters

Emissivity	0.95
Distance	4.56 ft
Reflected temp.	68.0 °F
Atmospheric temp.	68.0 °F
Relative humidity	50.0%
Ext. optics temp.	68.0 °F
Ext. optics trans.	1.00

File information

File name	FLIR1742.jpg
File size	273 KB
Width	240
Height	320
Minimum temp.	86.0 °F
Maximum temp.	90.5 °F

Camera information

Camera model	FLIR E75
Lens	FOL18
Camera serial	78518164
Filter	
Range max.	248.0 °F
Range min.	-4.0 °F
Field of view	23.50

Measurements

Sp1	87.6 °F
Sp2	87.8 °F
Sp3	87.5 °F
Sp4	88.0 °F
Sp5	88.0 °F

Geolocation

Coordinates	
Compass degrees	

Text annotations

Deficiencies were not observed at this equipment at the time of the inspection.

Building 500 - Main Electrical Room - Main Service Disconnect #1 - Circuit Breaker and Distribution Bars

Repairs Are Not Required

90.6 °F



85.4 °F



FLIR1744.jpg



78518164

Parameters

Emissivity	0.95
Distance	4.20 ft
Reflected temp.	68.0 °F
Atmospheric temp.	68.0 °F
Relative humidity	50.0%
Ext. optics temp.	68.0 °F
Ext. optics trans.	1.00

File information

File name	FLIR1744.jpg
File size	285 KB
Width	240
Height	320
Minimum temp.	85.8 °F
Maximum temp.	90.8 °F

Camera information

Camera model	FLIR E75
Lens	FOL18
Camera serial	78518164
Filter	
Range max.	248.0 °F
Range min.	-4.0 °F
Field of view	23.50

Measurements

Sp1	88.0 °F
Sp2	86.9 °F
Sp3	86.8 °F

Geolocation

Coordinates	
Compass degrees	

Text annotations

Deficiencies were not observed at this equipment at the time of the inspection.

Building 500 - Main Electrical Room - Main #1 - Units' Feeders and Main Circuit Breakers

Repairs Are Not Required

92.9 °F



85.6 °F



FLIR1748.jpg



78518164

Parameters

Emissivity	0.95
Distance	2.76 ft
Reflected temp.	68.0 °F
Atmospheric temp.	68.0 °F
Relative humidity	50.0%
Ext. optics temp.	68.0 °F
Ext. optics trans.	1.00

File information

File name	FLIR1748.jpg
File size	275 KB
Width	240
Height	320
Minimum temp.	86.0 °F
Maximum temp.	95.0 °F

Camera information

Camera model	FLIR E75
Lens	FOL18
Camera serial	78518164
Filter	
Range max.	248.0 °F
Range min.	-4.0 °F
Field of view	23.50

Measurements

Sp1	87.4 °F
Sp2	87.2 °F
Sp3	87.2 °F
Sp4	87.3 °F
Sp5	87.3 °F
Sp6	87.3 °F
Sp7	87.5 °F
Sp8	87.1 °F

Geolocation

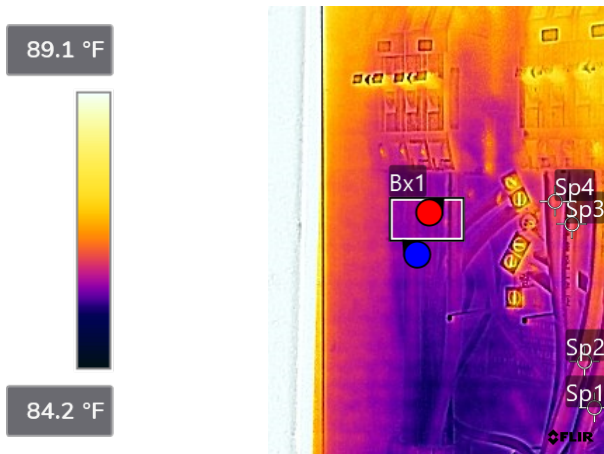
Coordinates	
Compass degrees	

Text annotations

Deficiencies were not observed at this equipment at the time of the inspection.

Building 500 - Main Electrical Room - Main #1 - Units' Feeders and Main Circuit Breakers

Repairs Are Not Required



FLIR1754.jpg



78518164

Parameters

Emissivity	0.95
Distance	2.83 ft
Reflected temp.	68.0 °F
Atmospheric temp.	68.0 °F
Relative humidity	50.0%
Ext. optics temp.	68.0 °F
Ext. optics trans.	1.00

File information

File name	FLIR1754.jpg
File size	250 KB
Width	240
Height	320
Minimum temp.	85.2 °F
Maximum temp.	90.1 °F

Camera information

Camera model	FLIR E75
Lens	FOL18
Camera serial	78518164
Filter	
Range max.	248.0 °F
Range min.	-4.0 °F
Field of view	23.50

Measurements

Bx1	
Max	86.2 °F
Avg	85.8 °F
Min	85.6 °F
Sp1	85.9 °F
Sp2	86.0 °F
Sp3	86.2 °F
Sp4	86.3 °F

Geolocation

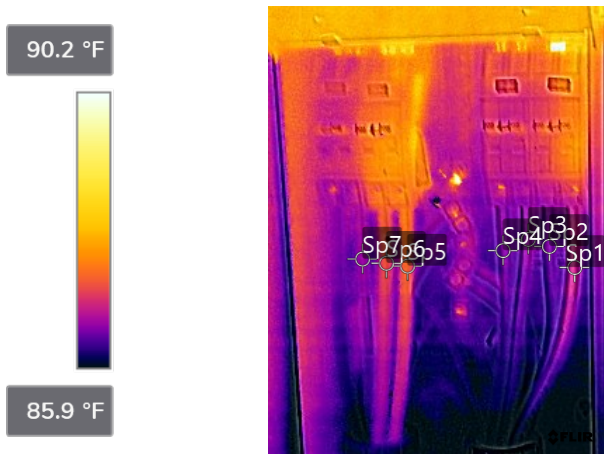
Coordinates	
Compass degrees	

Text annotations

Deficiencies were not observed at this equipment at the time of the inspection.

Building 500 - Main Electrical Room - Main #1 - Units' Feeders and Main Circuit Breakers

Repairs Are Not Required



FLIR1756.jpg



78518164

Parameters

Emissivity	0.95
Distance	3.15 ft
Reflected temp.	68.0 °F
Atmospheric temp.	68.0 °F
Relative humidity	50.0%
Ext. optics temp.	68.0 °F
Ext. optics trans.	1.00

File information

File name	FLIR1756.jpg
File size	256 KB
Width	240
Height	320
Minimum temp.	84.8 °F
Maximum temp.	93.3 °F

Camera information

Camera model	FLIR E75
Lens	FOL18
Camera serial	78518164
Filter	
Range max.	248.0 °F
Range min.	-4.0 °F
Field of view	23.50

Measurements

Dt1	
Sp6-Sp7	0.6 °F
Sp1	86.8 °F
Sp2	86.5 °F
Sp3	86.5 °F
Sp4	86.5 °F
Sp5	87.3 °F
Sp6	87.2 °F
Sp7	86.6 °F

Geolocation

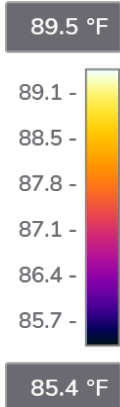
Coordinates	
Compass degrees	

Text annotations

Deficiencies were not observed at this equipment at the time of the inspection.

Building 500 - Main Electrical Room - Main #1 - Units' Feeders and Main Circuit Breakers

Repairs Are Not Required



FLIR1758.jpg



78518164

Parameters

Emissivity	0.95
Distance	3.24 ft
Reflected temp.	68.0 °F
Atmospheric temp.	68.0 °F
Relative humidity	50.0%
Ext. optics temp.	68.0 °F
Ext. optics trans.	1.00

File information

File name	FLIR1758.jpg
File size	256 KB
Width	240
Height	320
Minimum temp.	85.4 °F
Maximum temp.	91.7 °F

Camera information

Camera model	FLIR E75
Lens	FOL18
Camera serial	78518164
Filter	
Range max.	248.0 °F
Range min.	-4.0 °F
Field of view	23.50

Measurements

Sp1	87.5 °F
Sp2	87.5 °F
Sp3	86.6 °F
Sp4	86.5 °F

Geolocation

Coordinates	
Compass degrees	

Text annotations

The minor difference in color and temperature observed in Sp1 and Sp2 is a result of the temperature measured at the time of the inspection.

Phase A: 1.2 Amp

Phase B: 4 Amp

Deficiencies were not observed with this equipment at the time of the inspection.

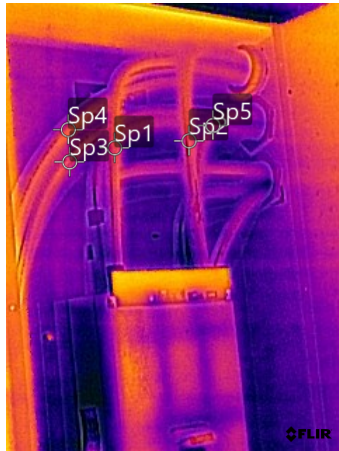
Building 500 - Main Electrical Room - Main Service Disconnect #2 - Feeders and Circuit Breaker

Repairs Are Not Required

90.6 °F



87.1 °F



FLIR1768.jpg



78518164

Parameters

Emissivity	0.95
Distance	5.35 ft
Reflected temp.	68.0 °F
Atmospheric temp.	68.0 °F
Relative humidity	50.0%
Ext. optics temp.	68.0 °F
Ext. optics trans.	1.00

File information

File name	FLIR1768.jpg
File size	245 KB
Width	240
Height	320
Minimum temp.	86.8 °F
Maximum temp.	89.6 °F

Camera information

Camera model	FLIR E75
Lens	FOL18
Camera serial	78518164
Filter	
Range max.	248.0 °F
Range min.	-4.0 °F
Field of view	23.50

Measurements

Sp1	88.3 °F
Sp2	88.3 °F
Sp3	88.2 °F
Sp4	88.3 °F
Sp5	88.0 °F

Geolocation

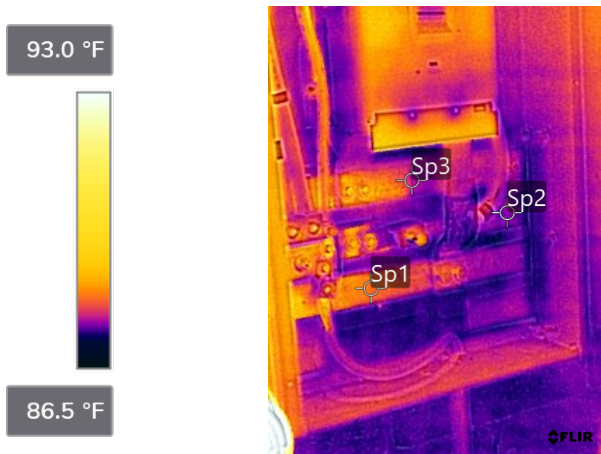
Coordinates	
Compass degrees	

Text annotations

Deficiencies were not observed at this equipment at the time of the inspection.

Building 500 - Main Electrical Room - Main Service Disconnect #2 - Circuit Breaker and Distribution Bars

Repairs Are Not Required



FLIR1772.jpg



78518164

Parameters

Emissivity	0.95
Distance	4.99 ft
Reflected temp.	68.0 °F
Atmospheric temp.	68.0 °F
Relative humidity	50.0%
Ext. optics temp.	68.0 °F
Ext. optics trans.	1.00

File information

File name	FLIR1772.jpg
File size	239 KB
Width	240
Height	320
Minimum temp.	87.1 °F
Maximum temp.	95.4 °F

Camera information

Camera model	FLIR E75
Lens	FOL18
Camera serial	78518164
Filter	
Range max.	248.0 °F
Range min.	-4.0 °F
Field of view	23.50

Measurements

Sp1	88.1 °F
Sp2	87.5 °F
Sp3	87.6 °F

Geolocation

Coordinates	
Compass degrees	

Text annotations

Deficiencies were not observed at this equipment at the time of the inspection.

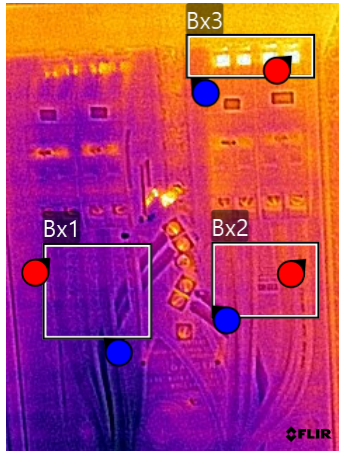
Building 500 - Main Electrical Room - Main #2 - Units' Feeders and Main Circuit Breakers

Minor Repair is Required

90.2 °F



85.7 °F



FLIR1774.jpg



78518164

Parameters

Emissivity	0.95
Distance	3.03 ft
Reflected temp.	68.0 °F
Atmospheric temp.	68.0 °F
Relative humidity	50.0%
Ext. optics temp.	68.0 °F
Ext. optics trans.	1.00

File information

File name	FLIR1774.jpg
File size	293 KB
Width	240
Height	320
Minimum temp.	86.0 °F
Maximum temp.	97.9 °F

Camera information

Camera model	FLIR E75
Lens	FOL18
Camera serial	78518164
Filter	
Range max.	248.0 °F
Range min.	-4.0 °F
Field of view	23.50

Measurements

Bx1	
Max	87.0 °F
Avg	86.6 °F
Min	86.4 °F
Bx2	
Max	87.4 °F
Avg	87.1 °F
Min	86.9 °F
Bx3	
Max	97.9 °F
Avg	88.4 °F
Min	87.3 °F

Geolocation

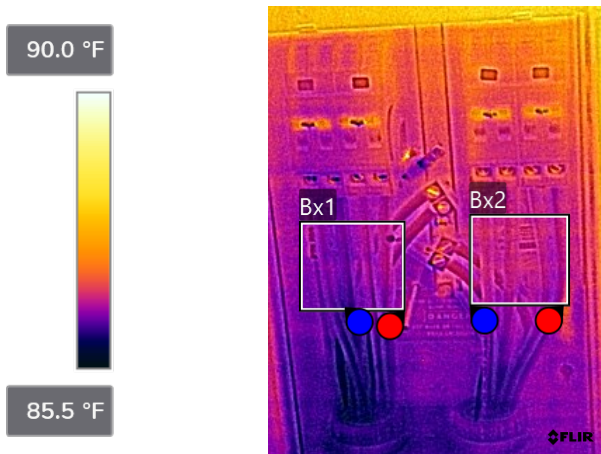
Coordinates	
Compass degrees	

Text annotations

Minor Repair is Required
High temperature was observed in the lugs connections at the circuit breakers.
The electrical contractor shall tight lugs and clean connection.

Building 500 - Main Electrical Room - Main #2 - Units' Feeders and Main Circuit Breakers

Repairs Are Not Required



FLIR1776.jpg



78518164

Parameters

Emissivity	0.95
Distance	2.91 ft
Reflected temp.	68.0 °F
Atmospheric temp.	68.0 °F
Relative humidity	50.0%
Ext. optics temp.	68.0 °F
Ext. optics trans.	1.00

File information

File name	FLIR1776.jpg
File size	302 KB
Width	240
Height	320
Minimum temp.	85.4 °F
Maximum temp.	89.9 °F

Camera information

Camera model	FLIR E75
Lens	FOL18
Camera serial	78518164
Filter	
Range max.	248.0 °F
Range min.	-4.0 °F
Field of view	23.50

Measurements

Bx1	
Max	86.7 °F
Avg	86.4 °F
Min	86.1 °F
Bx2	
Max	87.1 °F
Avg	86.6 °F
Min	86.3 °F

Geolocation

Coordinates	
Compass degrees	

Text annotations

Deficiencies were not observed at this equipment at the time of the inspection.

Building 500 - Main Electrical Room - Main #2 - Units' Feeders and Main Circuit Breakers

Repairs Are Not Required

89.1 °F



84.0 °F



FLIR1778.jpg



78518164

Parameters

Emissivity	0.95
Distance	2.90 ft
Reflected temp.	68.0 °F
Atmospheric temp.	68.0 °F
Relative humidity	50.0%
Ext. optics temp.	68.0 °F
Ext. optics trans.	1.00

File information

File name	FLIR1778.jpg
File size	306 KB
Width	240
Height	320
Minimum temp.	84.7 °F
Maximum temp.	90.3 °F

Camera information

Camera model	FLIR E75
Lens	FOL18
Camera serial	78518164
Filter	
Range max.	248.0 °F
Range min.	-4.0 °F
Field of view	23.50

Measurements

Bx1	
Max	86.4 °F
Avg	86.1 °F
Min	85.9 °F
Sp1	85.9 °F
Sp2	85.9 °F
Sp3	86.2 °F
Sp4	86.3 °F

Geolocation

Coordinates	
Compass degrees	

Text annotations

Deficiencies were not observed at this equipment at the time of the inspection.

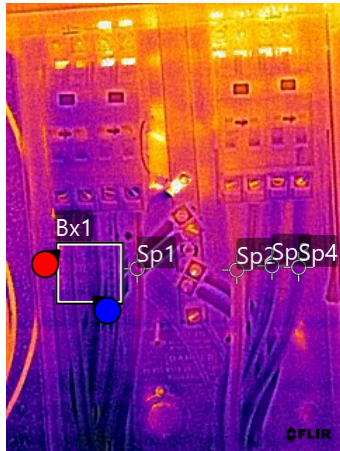
Building 500 - Main Electrical Room - Main #2 - Units' Feeders and Main Circuit Breakers

Repairs Are Not Required

88.6 °F



85.5 °F



FLIR1784.jpg



78518164

Parameters

Emissivity	0.95
Distance	3.14 ft
Reflected temp.	68.0 °F
Atmospheric temp.	68.0 °F
Relative humidity	50.0%
Ext. optics temp.	68.0 °F
Ext. optics trans.	1.00

File information

File name	FLIR1784.jpg
File size	326 KB
Width	240
Height	320
Minimum temp.	84.9 °F
Maximum temp.	93.5 °F

Camera information

Camera model	FLIR E75
Lens	FOL18
Camera serial	78518164
Filter	
Range max.	248.0 °F
Range min.	-4.0 °F
Field of view	23.50

Measurements

Bx1	
Max	87.2 °F
Avg	86.0 °F
Min	85.8 °F
Sp1	86.3 °F
Sp2	86.5 °F
Sp3	86.1 °F
Sp4	86.1 °F

Geolocation

Coordinates
Compass degrees

Text annotations

Deficiencies were not observed at this equipment at the time of the inspection.

Building 500 - Main Electrical Room - House Panel #1

Repairs Are Not Required

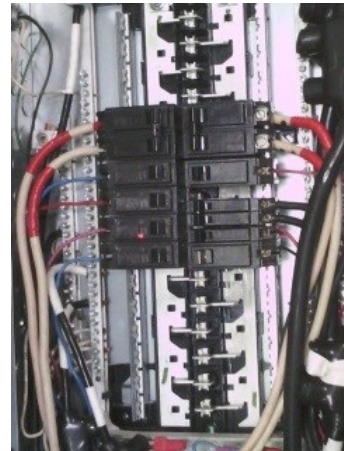
92.3 °F



87.2 °F



FLIR1764.jpg



78518164

Parameters

Emissivity	0.95
Distance	3.22 ft
Reflected temp.	68.0 °F
Atmospheric temp.	68.0 °F
Relative humidity	50.0%
Ext. optics temp.	68.0 °F
Ext. optics trans.	1.00

File information

File name	FLIR1764.jpg
File size	408 KB
Width	240
Height	320
Minimum temp.	83.9 °F
Maximum temp.	93.3 °F

Camera information

Camera model	FLIR E75
Lens	FOL18
Camera serial	78518164
Filter	
Range max.	248.0 °F
Range min.	-4.0 °F
Field of view	23.50

Measurements

Bx1	
Max	89.3 °F
Avg	87.8 °F
Min	86.8 °F
Sp1	89.1 °F
Sp2	88.9 °F
Sp3	88.8 °F

Geolocation

Coordinates	
Compass degrees	

Text annotations

The minor difference in color and temperature observed in Sp1 and Sp2 is a result of the temperature measured at the time of the inspection.

Phase A: 1.5 Amp

Phase B: 2 Amp

Deficiencies were not observed with this equipment at the time of the inspection.

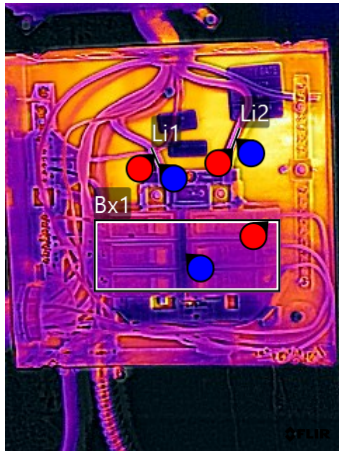
Building 500 - Main Electrical Room - House Panel #2

Repairs Are Not Required

95.4 °F



85.7 °F



FLIR1766.jpg



78518164

Parameters

Emissivity	0.95
Distance	3.07 ft
Reflected temp.	68.0 °F
Atmospheric temp.	68.0 °F
Relative humidity	50.0%
Ext. optics temp.	68.0 °F
Ext. optics trans.	1.00

File information

File name	FLIR1766.jpg
File size	361 KB
Width	240
Height	320
Minimum temp.	84.0 °F
Maximum temp.	97.5 °F

Camera information

Camera model	FLIR E75
Lens	FOL18
Camera serial	78518164
Filter	
Range max.	248.0 °F
Range min.	-4.0 °F
Field of view	23.50

Measurements

Bx1	
Max	89.7 °F
Avg	87.6 °F
Min	86.2 °F
Li1	
Max	87.6 °F
Avg	87.4 °F
Min	87.2 °F
Li2	
Max	88.7 °F
Avg	88.2 °F
Min	87.7 °F

Geolocation

Coordinates	
Compass degrees	

Text annotations

Deficiencies were not observed at this equipment at the time of the inspection.

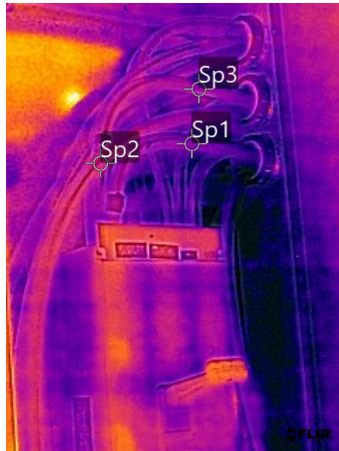
Building 600 - Main Electrical Room - Main Service Disconnect #1 - Feeders and Circuit Breaker

Repairs Are Not Required

87.7 °F



85.1 °F



FLIR1786.jpg



78518164

Parameters

Emissivity	0.95
Distance	4.68 ft
Reflected temp.	68.0 °F
Atmospheric temp.	68.0 °F
Relative humidity	50.0%
Ext. optics temp.	68.0 °F
Ext. optics trans.	1.00

File information

File name	FLIR1786.jpg
File size	250 KB
Width	240
Height	320
Minimum temp.	84.8 °F
Maximum temp.	88.4 °F

Camera information

Camera model	FLIR E75
Lens	FOL18
Camera serial	78518164
Filter	
Range max.	248.0 °F
Range min.	-4.0 °F
Field of view	23.50

Measurements

Sp1	85.5 °F
Sp2	85.8 °F
Sp3	85.6 °F

Geolocation

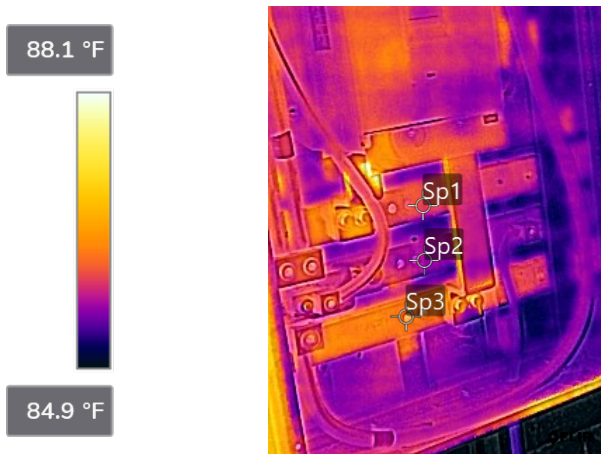
Coordinates	
Compass degrees	

Text annotations

Deficiencies were not observed at this equipment at the time of the inspection.

Building 600 - Main Electrical Room - Main Service Disconnect #1 - Circuit Breaker and Distribution Bars

Repairs Are Not Required



FLIR1788.jpg



78518164

Parameters

Emissivity	0.95
Distance	4.70 ft
Reflected temp.	68.0 °F
Atmospheric temp.	68.0 °F
Relative humidity	50.0%
Ext. optics temp.	68.0 °F
Ext. optics trans.	1.00

File information

File name	FLIR1788.jpg
File size	282 KB
Width	240
Height	320
Minimum temp.	84.4 °F
Maximum temp.	88.5 °F

Camera information

Camera model	FLIR E75
Lens	FOL18
Camera serial	78518164
Filter	
Range max.	248.0 °F
Range min.	-4.0 °F
Field of view	23.50

Measurements

Dt1	
Sp1-Sp2	0.3 °F
Sp1	85.9 °F
Sp2	85.6 °F
Sp3	86.1 °F

Geolocation

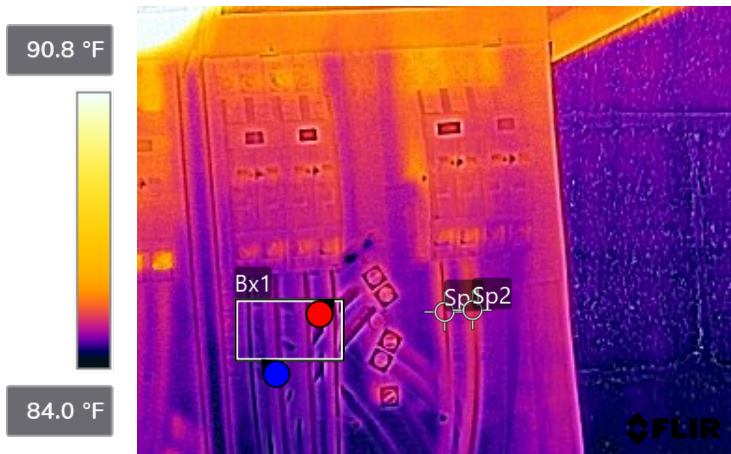
Coordinates	
Compass degrees	

Text annotations

Deficiencies were not observed at this equipment at the time of the inspection.

Building 600 - Main Electrical Room - Main #1 - Units' Feeders and Main Circuit Breakers

Repairs Are Not Required



FLIR1792.jpg



78518164

Parameters

Emissivity	0.95
Distance	3.44 ft
Reflected temp.	68.0 °F
Atmospheric temp.	68.0 °F
Relative humidity	50.0%
Ext. optics temp.	68.0 °F
Ext. optics trans.	1.00

File information

File name	FLIR1792.jpg
File size	286 KB
Width	320
Height	240
Minimum temp.	84.0 °F
Maximum temp.	95.2 °F

Camera information

Camera model	FLIR E75
Lens	FOL18
Camera serial	78518164
Filter	
Range max.	248.0 °F
Range min.	-4.0 °F
Field of view	23.50

Measurements

Bx1	
Max	85.0 °F
Avg	84.7 °F
Min	84.5 °F
Sp1	85.2 °F
Sp2	85.2 °F

Geolocation

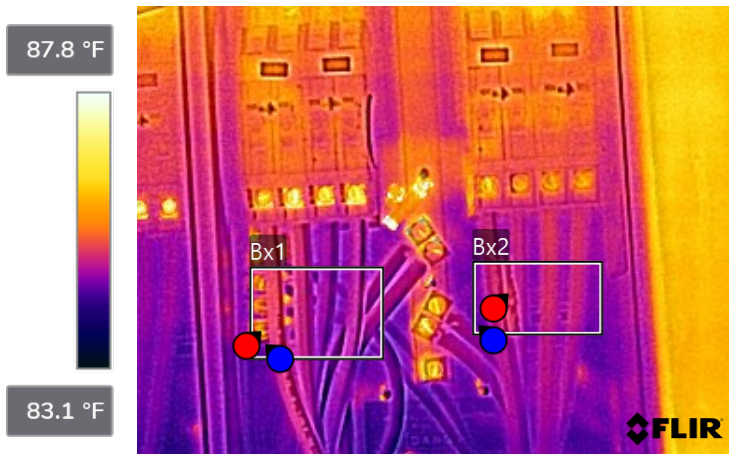
Coordinates	
Compass degrees	

Text annotations

Deficiencies were not observed at this equipment at the time of the inspection.

Building 600 - Main Electrical Room - Main #1 - Units' Feeders and Main Circuit Breakers

Repairs Are Not Required



FLIR1794.jpg



78518164

Parameters

Emissivity	0.95
Distance	3.05 ft
Reflected temp.	68.0 °F
Atmospheric temp.	68.0 °F
Relative humidity	50.0%
Ext. optics temp.	68.0 °F
Ext. optics trans.	1.00

File information

File name	FLIR1794.jpg
File size	279 KB
Width	320
Height	240
Minimum temp.	84.2 °F
Maximum temp.	92.7 °F

Camera information

Camera model	FLIR E75
Lens	FOL18
Camera serial	78518164
Filter	
Range max.	248.0 °F
Range min.	-4.0 °F
Field of view	23.50

Measurements

Bx1	
Max	86.4 °F
Avg	84.9 °F
Min	84.4 °F
Bx2	
Max	85.1 °F
Avg	84.8 °F
Min	84.4 °F

Geolocation

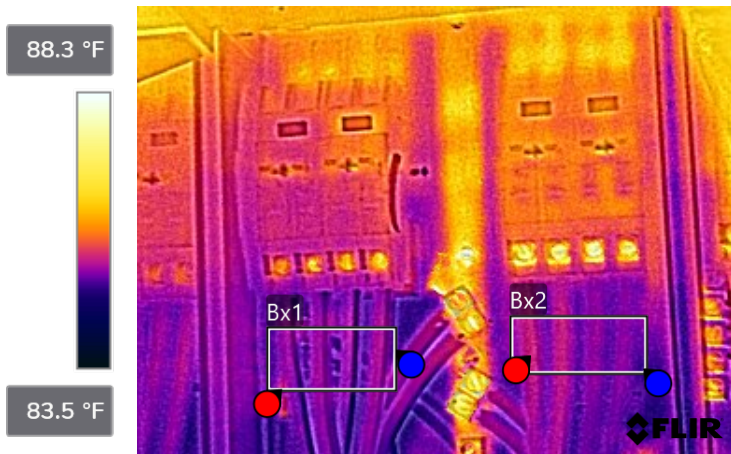
Coordinates	
Compass degrees	

Text annotations

Deficiencies were not observed at this equipment at the time of the inspection.

Building 600 - Main Electrical Room - Main #1 - Units' Feeders and Main Circuit Breakers

Repairs Are Not Required



FLIR1796.jpg



78518164

Parameters

Emissivity	0.95
Distance	2.94 ft
Reflected temp.	68.0 °F
Atmospheric temp.	68.0 °F
Relative humidity	50.0%
Ext. optics temp.	68.0 °F
Ext. optics trans.	1.00

File information

File name	FLIR1796.jpg
File size	325 KB
Width	320
Height	240
Minimum temp.	84.5 °F
Maximum temp.	90.2 °F

Camera information

Camera model	FLIR E75
Lens	FOL18
Camera serial	78518164
Filter	
Range max.	248.0 °F
Range min.	-4.0 °F
Field of view	23.50

Measurements

Bx1	
Max	85.7 °F
Avg	85.1 °F
Min	84.9 °F
Bx2	
Max	85.4 °F
Avg	85.2 °F
Min	84.9 °F

Geolocation

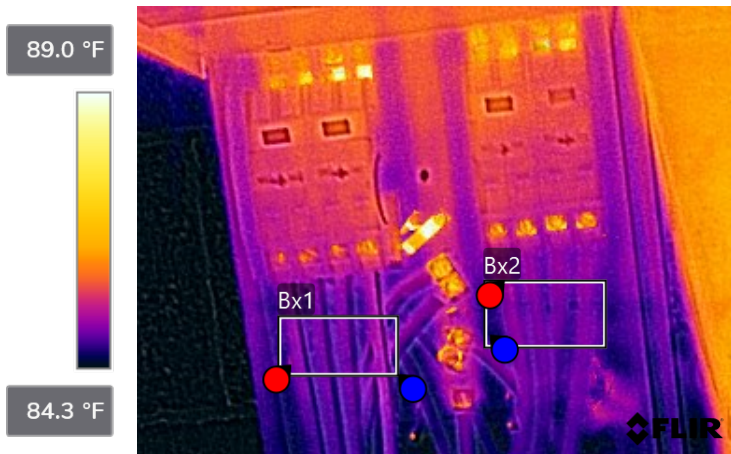
Coordinates	
Compass degrees	

Text annotations

Deficiencies were not observed at this equipment at the time of the inspection.

Building 600 - Main Electrical Room - Main #1 - Units' Feeders and Main Circuit Breakers

Repairs Are Not Required



FLIR1802.jpg



78518164

Parameters

Emissivity	0.95
Distance	3.11 ft
Reflected temp.	68.0 °F
Atmospheric temp.	68.0 °F
Relative humidity	50.0%
Ext. optics temp.	68.0 °F
Ext. optics trans.	1.00

File information

File name	FLIR1802.jpg
File size	266 KB
Width	320
Height	240
Minimum temp.	83.8 °F
Maximum temp.	91.9 °F

Camera information

Camera model	FLIR E75
Lens	FOL18
Camera serial	78518164
Filter	
Range max.	248.0 °F
Range min.	-4.0 °F
Field of view	23.50

Measurements

Bx1	
Max	85.3 °F
Avg	84.8 °F
Min	84.5 °F
Bx2	
Max	85.2 °F
Avg	84.8 °F
Min	84.5 °F

Geolocation

Coordinates	
Compass degrees	

Text annotations

Deficiencies were not observed at this equipment at the time of the inspection.

Building 600 - Main Electrical Room - Main Service Disconnect #2 - Fedders and Circuit Breaker

Repairs Are Not Required

88.7 °F



86.1 °F



FLIR1806.jpg



78518164

Parameters

Emissivity	0.95
Distance	4.39 ft
Reflected temp.	68.0 °F
Atmospheric temp.	68.0 °F
Relative humidity	50.0%
Ext. optics temp.	68.0 °F
Ext. optics trans.	1.00

File information

File name	FLIR1806.jpg
File size	266 KB
Width	240
Height	320
Minimum temp.	85.5 °F
Maximum temp.	91.6 °F

Camera information

Camera model	FLIR E75
Lens	FOL18
Camera serial	78518164
Filter	
Range max.	248.0 °F
Range min.	-4.0 °F
Field of view	23.50

Measurements

Sp1	86.6 °F
Sp2	86.7 °F
Sp3	86.8 °F
Sp4	86.8 °F
Sp5	86.6 °F

Geolocation

Coordinates	
Compass degrees	

Text annotations

Deficiencies were not observed at this equipment at the time of the inspection.

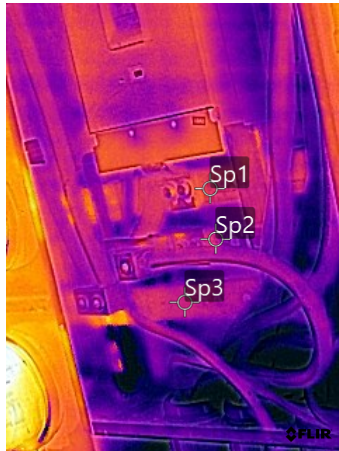
Building 600 - Main Electrical Room - Main Service Disconnect #2 - Circuit Breaker and Distribution Bars

Repairs Are Not Required

91.2 °F



86.1 °F



FLIR1808.jpg



78518164

Parameters

Emissivity	0.95
Distance	4.54 ft
Reflected temp.	68.0 °F
Atmospheric temp.	68.0 °F
Relative humidity	50.0%
Ext. optics temp.	68.0 °F
Ext. optics trans.	1.00

File information

File name	FLIR1808.jpg
File size	281 KB
Width	240
Height	320
Minimum temp.	85.0 °F
Maximum temp.	92.5 °F

Camera information

Camera model	FLIR E75
Lens	FOL18
Camera serial	78518164
Filter	
Range max.	248.0 °F
Range min.	-4.0 °F
Field of view	23.50

Measurements

Sp1	87.1 °F
Sp2	86.9 °F
Sp3	87.0 °F

Geolocation

Coordinates	
Compass degrees	

Text annotations

Deficiencies were not observed at this equipment at the time of the inspection.

Building 600 - Main Electrical Room - Main #2 - Units' Feeders and Main Circuit Breakers

Repairs Are Not Required



FLIR1812.jpg



78518164

Parameters

Emissivity	0.95
Distance	2.71 ft
Reflected temp.	68.0 °F
Atmospheric temp.	68.0 °F
Relative humidity	50.0%
Ext. optics temp.	68.0 °F
Ext. optics trans.	1.00

File information

File name	FLIR1812.jpg
File size	256 KB
Width	320
Height	240
Minimum temp.	85.5 °F
Maximum temp.	94.2 °F

Camera information

Camera model	FLIR E75
Lens	FOL18
Camera serial	78518164
Filter	
Range max.	248.0 °F
Range min.	-4.0 °F
Field of view	23.50

Measurements

Bx1	
Max	87.7 °F
Avg	86.5 °F
Min	86.3 °F
Bx2	
Max	86.2 °F
Avg	86.0 °F
Min	85.7 °F

Geolocation

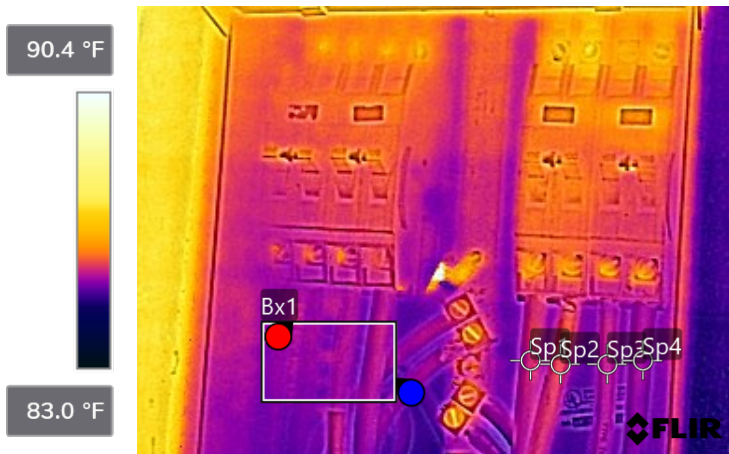
Coordinates	
Compass degrees	

Text annotations

Deficiencies were not observed at this equipment at the time of the inspection.

Building 600 - Main Electrical Room - Main #2 - Units' Feeders and Main Circuit Breakers

Repairs Are Not Required



FLIR1818.jpg



78518164

Parameters

Emissivity	0.95
Distance	2.74 ft
Reflected temp.	68.0 °F
Atmospheric temp.	68.0 °F
Relative humidity	50.0%
Ext. optics temp.	68.0 °F
Ext. optics trans.	1.00

File information

File name	FLIR1818.jpg
File size	250 KB
Width	320
Height	240
Minimum temp.	84.5 °F
Maximum temp.	91.9 °F

Camera information

Camera model	FLIR E75
Lens	FOL18
Camera serial	78518164
Filter	
Range max.	248.0 °F
Range min.	-4.0 °F
Field of view	23.50

Measurements

Bx1	
Max	85.6 °F
Avg	85.4 °F
Min	85.0 °F
Sp1	85.7 °F
Sp2	85.8 °F
Sp3	85.6 °F
Sp4	85.4 °F

Geolocation

Coordinates	
Compass degrees	

Text annotations

Deficiencies were not observed at this equipment at the time of the inspection.

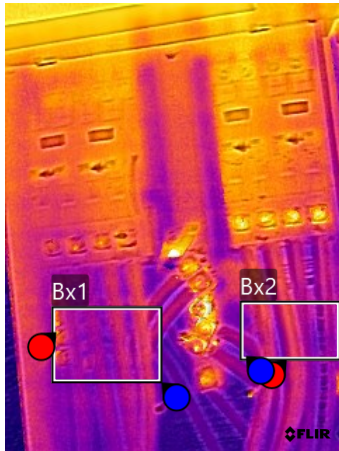
Building 600 - Main Electrical Room - Main #2 - Units' Feeders and Main Circuit Breakers

Repairs Are Not Required

88.4 °F



83.8 °F



FLIR1820.jpg



78518164

Parameters

Emissivity	0.95
Distance	2.59 ft
Reflected temp.	68.0 °F
Atmospheric temp.	68.0 °F
Relative humidity	50.0%
Ext. optics temp.	68.0 °F
Ext. optics trans.	1.00

File information

File name	FLIR1820.jpg
File size	261 KB
Width	240
Height	320
Minimum temp.	84.5 °F
Maximum temp.	95.5 °F

Camera information

Camera model	FLIR E75
Lens	FOL18
Camera serial	78518164
Filter	
Range max.	248.0 °F
Range min.	-4.0 °F
Field of view	23.50

Measurements

Bx1	
Max	87.1 °F
Avg	85.4 °F
Min	84.9 °F
Bx2	
Max	86.2 °F
Avg	85.4 °F
Min	85.0 °F

Geolocation

Coordinates	
Compass degrees	

Text annotations

Deficiencies were not observed at this equipment at the time of the inspection.

Building 600 - Main Electrical Room - Main #2 - Units' Feeders and Main Circuit Breakers

Repairs Are Not Required

88.7 °F



83.8 °F



FLIR1824.jpg



78518164

Parameters

Emissivity	0.95
Distance	2.74 ft
Reflected temp.	68.0 °F
Atmospheric temp.	68.0 °F
Relative humidity	50.0%
Ext. optics temp.	68.0 °F
Ext. optics trans.	1.00

File information

File name	FLIR1824.jpg
File size	258 KB
Width	240
Height	320
Minimum temp.	84.3 °F
Maximum temp.	87.8 °F

Camera information

Camera model	FLIR E75
Lens	FOL18
Camera serial	78518164
Filter	
Range max.	248.0 °F
Range min.	-4.0 °F
Field of view	23.50

Measurements

Bx1	
Max	85.3 °F
Avg	85.1 °F
Min	84.8 °F
Bx2	
Max	85.4 °F
Avg	85.2 °F
Min	84.8 °F

Geolocation

Coordinates	
Compass degrees	

Text annotations

Deficiencies were not observed at this equipment at the time of the inspection.

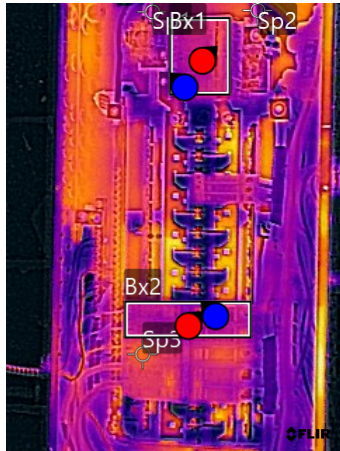
Building 600 - Main Electrical Room - House Panel #1

Repairs Are Not Required

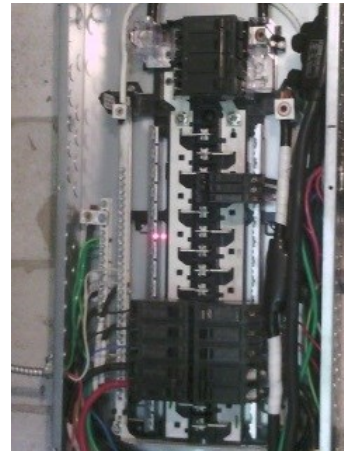
92.3 °F



85.0 °F



FLIR1826.jpg



78518164

Parameters

Emissivity	0.95
Distance	4.70 ft
Reflected temp.	68.0 °F
Atmospheric temp.	68.0 °F
Relative humidity	50.0%
Ext. optics temp.	68.0 °F
Ext. optics trans.	1.00

File information

File name	FLIR1826.jpg
File size	351 KB
Width	240
Height	320
Minimum temp.	83.6 °F
Maximum temp.	91.4 °F

Camera information

Camera model	FLIR E75
Lens	FOL18
Camera serial	78518164
Filter	
Range max.	248.0 °F
Range min.	-4.0 °F
Field of view	23.50

Measurements

Bx1	
Max	87.1 °F
Avg	86.3 °F
Min	85.9 °F
Bx2	
Max	87.6 °F
Avg	86.2 °F
Min	85.4 °F
Sp1	86.2 °F
Sp2	86.0 °F
Sp3	86.9 °F

Geolocation

Coordinates	
Compass degrees	

Text annotations

Deficiencies were not observed at this equipment at the time of the inspection.

Building 600 - Main Electrical Room - House Panel #2

Repairs Are Not Required

93.2 °F



85.8 °F



FLIR1832.jpg



78518164

Parameters

Emissivity	0.95
Distance	3.41 ft
Reflected temp.	68.0 °F
Atmospheric temp.	68.0 °F
Relative humidity	50.0%
Ext. optics temp.	68.0 °F
Ext. optics trans.	1.00

File information

File name	FLIR1832.jpg
File size	366 KB
Width	240
Height	320
Minimum temp.	84.3 °F
Maximum temp.	91.3 °F

Camera information

Camera model	FLIR E75
Lens	FOL18
Camera serial	78518164
Filter	
Range max.	248.0 °F
Range min.	-4.0 °F
Field of view	23.50

Measurements

Li1	
Max	86.7 °F
Avg	86.5 °F
Min	86.2 °F
Li2	
Max	86.5 °F
Avg	86.4 °F
Min	86.3 °F
Sp1	86.6 °F
Sp2	86.4 °F
Sp3	86.6 °F

Geolocation

Coordinates	
Compass degrees	

Text annotations

Deficiencies were not observed at this equipment at the time of the inspection.

Building 600 - Laundry Room - Panel

Repairs Are Not Required

87.6 °F



84.8 °F



FLIR1836.jpg



78518164

Parameters

Emissivity	0.95
Distance	2.89 ft
Reflected temp.	68.0 °F
Atmospheric temp.	68.0 °F
Relative humidity	50.0%
Ext. optics temp.	68.0 °F
Ext. optics trans.	1.00

File information

File name	FLIR1836.jpg
File size	265 KB
Width	240
Height	320
Minimum temp.	84.4 °F
Maximum temp.	89.0 °F

Camera information

Camera model	FLIR E75
Lens	FOL18
Camera serial	78518164
Filter	
Range max.	248.0 °F
Range min.	-4.0 °F
Field of view	23.50

Measurements

Bx1	
Max	86.5 °F
Avg	85.5 °F
Min	85.2 °F
Bx2	
Max	85.7 °F
Avg	85.4 °F
Min	85.3 °F

Geolocation

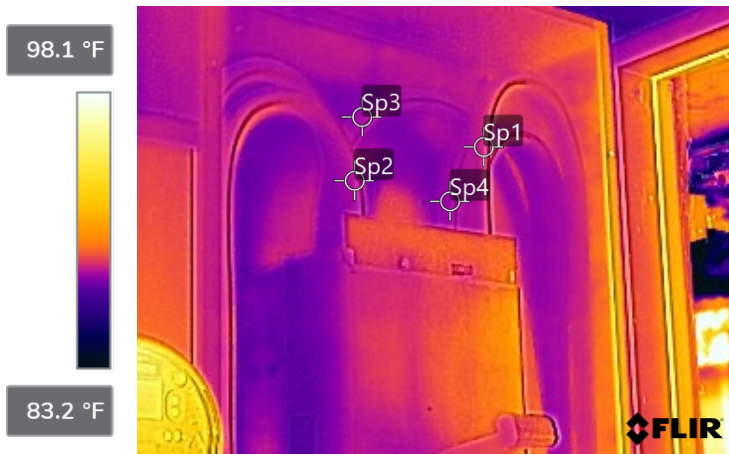
Coordinates	
Compass degrees	

Text annotations

Deficiencies were not observed at this equipment at the time of the inspection.

Building 700 - Main Electrical Room - Main Service Disconnect #1 - Fedders and Circuit Breaker

Repairs Are Not Required



FLIR1838.jpg



78518164

Parameters

Emissivity	0.95
Distance	5.01 ft
Reflected temp.	68.0 °F
Atmospheric temp.	68.0 °F
Relative humidity	50.0%
Ext. optics temp.	68.0 °F
Ext. optics trans.	1.00

File information

File name	FLIR1838.jpg
File size	232 KB
Width	320
Height	240
Minimum temp.	79.7 °F
Maximum temp.	119.8 °F

Camera information

Camera model	FLIR E75
Lens	FOL18
Camera serial	78518164
Filter	
Range max.	248.0 °F
Range min.	-4.0 °F
Field of view	23.50

Measurements

Sp1	88.6 °F
Sp2	88.4 °F
Sp3	88.2 °F
Sp4	88.2 °F

Geolocation

Coordinates	
Compass degrees	

Text annotations

Deficiencies were not observed at this equipment at the time of the inspection.

Building 700 - Main Electrical Room - Main Service Disconnect #1 - Circuit Breaker and Distribution Bars

Repairs Are Not Required



FLIR1840.jpg



78518164

Parameters

Emissivity	0.95
Distance	4.18 ft
Reflected temp.	68.0 °F
Atmospheric temp.	68.0 °F
Relative humidity	50.0%
Ext. optics temp.	68.0 °F
Ext. optics trans.	1.00

File information

File name	FLIR1840.jpg
File size	309 KB
Width	320
Height	240
Minimum temp.	85.4 °F
Maximum temp.	94.1 °F

Camera information

Camera model	FLIR E75
Lens	FOL18
Camera serial	78518164
Filter	
Range max.	248.0 °F
Range min.	-4.0 °F
Field of view	23.50

Measurements

Sp1	87.7 °F
Sp2	87.7 °F
Sp3	88.3 °F

Geolocation

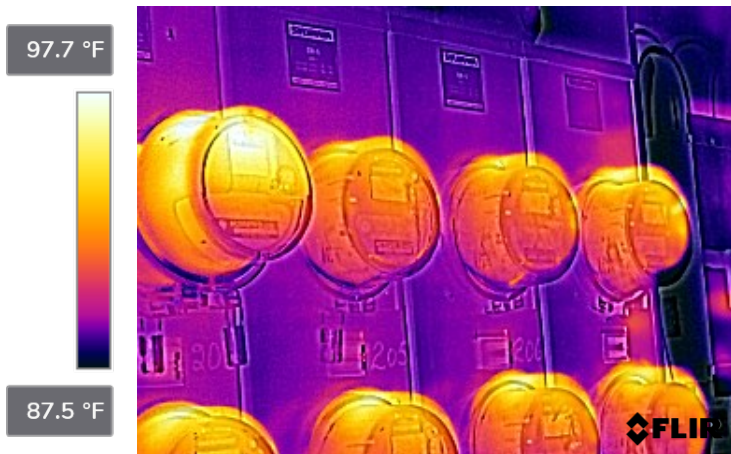
Coordinates	
Compass degrees	

Text annotations

Deficiencies were not observed at this equipment at the time of the inspection.

Building 700 - Main Electrical Room - Main Service Disconnect #1 - Unit's Main Breaker and Meters

Repairs Are Not Required



FLIR1842.jpg



78518164

Parameters

Emissivity	0.95
Distance	1.00 ft
Reflected temp.	68.0 °F
Atmospheric temp.	68.0 °F
Relative humidity	50.0%
Ext. optics temp.	68.0 °F
Ext. optics trans.	1.00

File information

File name	FLIR1842.jpg
File size	319 KB
Width	320
Height	240
Minimum temp.	86.8 °F
Maximum temp.	99.5 °F

Camera information

Camera model	FLIR E75
Lens	FOL18
Camera serial	78518164
Filter	
Range max.	248.0 °F
Range min.	-4.0 °F
Field of view	23.50

Measurements

Geolocation

Coordinates
Compass degrees

Text annotations

Deficiencies were not observed at this equipment at the time of the inspection.

Building 700 - Main Electrical Room - Main Service Disconnect #1 - Unit's Main Breaker and Meters

Repairs Are Not Required



FLIR1844.jpg



78518164

Parameters

Emissivity	0.95
Distance	1.00 ft
Reflected temp.	68.0 °F
Atmospheric temp.	68.0 °F
Relative humidity	50.0%
Ext. optics temp.	68.0 °F
Ext. optics trans.	1.00

File information

File name	FLIR1844.jpg
File size	329 KB
Width	320
Height	240
Minimum temp.	85.9 °F
Maximum temp.	107.5 °F

Camera information

Camera model	FLIR E75
Lens	FOL18
Camera serial	78518164
Filter	
Range max.	248.0 °F
Range min.	-4.0 °F
Field of view	23.50

Measurements

Geolocation

Coordinates
Compass degrees

Text annotations

Deficiencies were not observed at this equipment at the time of the inspection.

Building 700 - Main Electrical Room - Main Service Disconnect #1 - Unit's Main Breaker and Meters

Repairs Are Not Required



FLIR1846.jpg



78518164

Parameters

Emissivity	0.95
Distance	1.00 ft
Reflected temp.	68.0 °F
Atmospheric temp.	68.0 °F
Relative humidity	50.0%
Ext. optics temp.	68.0 °F
Ext. optics trans.	1.00

File information

File name	FLIR1846.jpg
File size	297 KB
Width	320
Height	240
Minimum temp.	85.9 °F
Maximum temp.	98.1 °F

Camera information

Camera model	FLIR E75
Lens	FOL18
Camera serial	78518164
Filter	
Range max.	248.0 °F
Range min.	-4.0 °F
Field of view	23.50

Measurements

Geolocation

Coordinates
Compass degrees

Text annotations

Deficiencies were not observed at this equipment at the time of the inspection.

Building 700 - Main Electrical Room - Main Service Disconnect #2 - Fedders and Circuit Breaker

Repairs Are Not Required

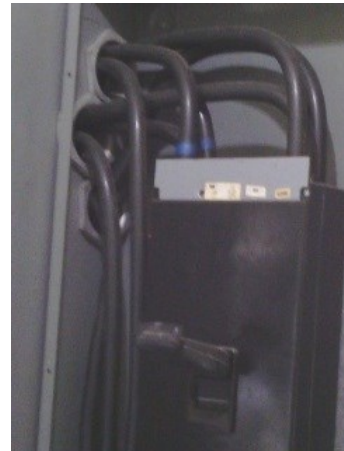
90.9 °F



87.7 °F



FLIR1848.jpg



78518164

Parameters

Emissivity	0.95
Distance	4.60 ft
Reflected temp.	68.0 °F
Atmospheric temp.	68.0 °F
Relative humidity	50.0%
Ext. optics temp.	68.0 °F
Ext. optics trans.	1.00

File information

File name	FLIR1848.jpg
File size	234 KB
Width	240
Height	320
Minimum temp.	87.9 °F
Maximum temp.	92.2 °F

Camera information

Camera model	FLIR E75
Lens	FOL18
Camera serial	78518164
Filter	
Range max.	248.0 °F
Range min.	-4.0 °F
Field of view	23.50

Measurements

Sp1	88.6 °F
Sp2	88.7 °F
Sp3	88.5 °F
Sp4	88.5 °F

Geolocation

Coordinates	
Compass degrees	

Text annotations

Deficiencies were not observed at this equipment at the time of the inspection.

Building 700 - Main Electrical Room - Main Service Disconnect #2 - Circuit Breaker and Distribution Bars

Repairs Are Not Required

91.7 °F



87.2 °F



FLIR1852.jpg



78518164

Parameters

Emissivity	0.95
Distance	5.17 ft
Reflected temp.	68.0 °F
Atmospheric temp.	68.0 °F
Relative humidity	50.0%
Ext. optics temp.	68.0 °F
Ext. optics trans.	1.00

File information

File name	FLIR1852.jpg
File size	261 KB
Width	240
Height	320
Minimum temp.	87.1 °F
Maximum temp.	91.8 °F

Camera information

Camera model	FLIR E75
Lens	FOL18
Camera serial	78518164
Filter	
Range max.	248.0 °F
Range min.	-4.0 °F
Field of view	23.50

Measurements

Sp1	88.4 °F
Sp2	88.2 °F
Sp3	88.7 °F

Geolocation

Coordinates	
Compass degrees	

Text annotations

Deficiencies were not observed at this equipment at the time of the inspection.

Building 700 - Main Electrical Room - Main Service Disconnect #2 - Unit's Main Breaker and Meters

Repairs Are Not Required



FLIR1856.jpg



78518164

Parameters

Emissivity	0.95
Distance	6.24 ft
Reflected temp.	68.0 °F
Atmospheric temp.	68.0 °F
Relative humidity	50.0%
Ext. optics temp.	68.0 °F
Ext. optics trans.	1.00

File information

File name	FLIR1856.jpg
File size	275 KB
Width	320
Height	240
Minimum temp.	84.3 °F
Maximum temp.	103.9 °F

Camera information

Camera model	FLIR E75
Lens	FOL18
Camera serial	78518164
Filter	
Range max.	248.0 °F
Range min.	-4.0 °F
Field of view	23.50

Measurements

Geolocation

Coordinates
Compass degrees

Text annotations

Deficiencies were not observed at this equipment at the time of the inspection.

Building 700 - Main Electrical Room - House Panel 1 - Feeders and Main Circuit Breaker

Repairs Are Not Required

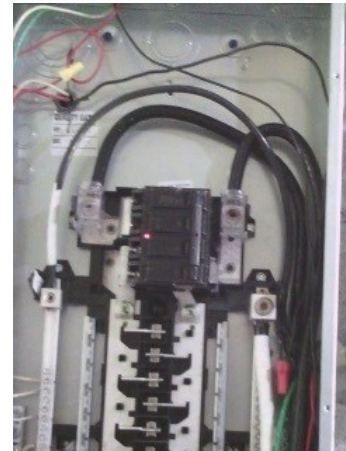
95.2 °F



87.9 °F



FLIR1858.jpg



78518164

Parameters

Emissivity	0.95
Distance	3.54 ft
Reflected temp.	68.0 °F
Atmospheric temp.	68.0 °F
Relative humidity	50.0%
Ext. optics temp.	68.0 °F
Ext. optics trans.	1.00

File information

File name	FLIR1858.jpg
File size	303 KB
Width	240
Height	320
Minimum temp.	86.9 °F
Maximum temp.	94.8 °F

Camera information

Camera model	FLIR E75
Lens	FOL18
Camera serial	78518164
Filter	
Range max.	248.0 °F
Range min.	-4.0 °F
Field of view	23.50

Measurements

Li1	
Max	88.6 °F
Avg	88.6 °F
Min	88.5 °F
Sp1	88.3 °F
Sp2	88.6 °F

Geolocation

Coordinates	
Compass degrees	

Text annotations

Deficiencies were not observed at this equipment at the time of the inspection.

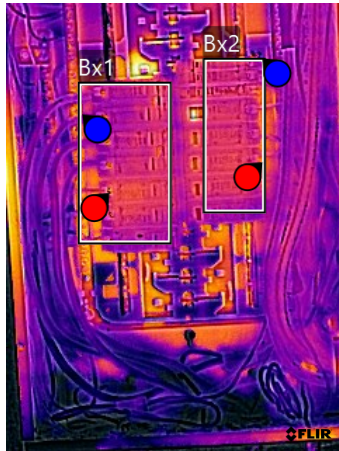
Building 700 - Main Electrical Room - House Panel 1 - Circuit Breakers

Repairs Are Not Required

95.1 °F



87.8 °F



FLIR1860.jpg



78518164

Parameters

Emissivity	0.95
Distance	3.57 ft
Reflected temp.	68.0 °F
Atmospheric temp.	68.0 °F
Relative humidity	50.0%
Ext. optics temp.	68.0 °F
Ext. optics trans.	1.00

File information

File name	FLIR1860.jpg
File size	340 KB
Width	240
Height	320
Minimum temp.	86.3 °F
Maximum temp.	101.9 °F

Camera information

Camera model	FLIR E75
Lens	FOL18
Camera serial	78518164
Filter	
Range max.	248.0 °F
Range min.	-4.0 °F
Field of view	23.50

Measurements

Bx1	
Max	93.4 °F
Avg	88.7 °F
Min	88.1 °F
Bx2	
Max	89.9 °F
Avg	88.7 °F
Min	88.0 °F

Geolocation

Coordinates	
Compass degrees	

Text annotations

Deficiencies were not observed at this equipment at the time of the inspection.

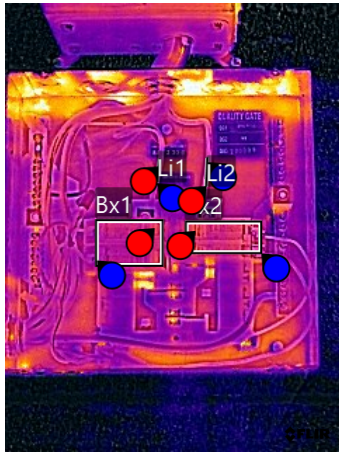
Building 700 - Main Electrical Room - House Panel 2

Repairs Are Not Required

90.3 °F



87.8 °F



FLIR1862.jpg



78518164

Parameters

Emissivity	0.95
Distance	3.21 ft
Reflected temp.	68.0 °F
Atmospheric temp.	68.0 °F
Relative humidity	50.0%
Ext. optics temp.	68.0 °F
Ext. optics trans.	1.00

File information

File name	FLIR1862.jpg
File size	349 KB
Width	240
Height	320
Minimum temp.	87.5 °F
Maximum temp.	92.0 °F

Camera information

Camera model	FLIR E75
Lens	FOL18
Camera serial	78518164
Filter	
Range max.	248.0 °F
Range min.	-4.0 °F
Field of view	23.50

Measurements

Bx1	
Max	88.8 °F
Avg	88.5 °F
Min	88.0 °F
Bx2	
Max	88.8 °F
Avg	88.6 °F
Min	88.5 °F
Li1	
Max	88.5 °F
Avg	88.4 °F
Min	88.3 °F
Li2	
Max	88.6 °F
Avg	88.5 °F
Min	88.5 °F

Geolocation

Coordinates	
Compass degrees	

Text annotations

Deficiencies were not observed at this equipment at the time of the inspection.

Building 700 - Laundry Room - Panel

Repairs Are Not Required



FLIR1874.jpg



78518164

Parameters

Emissivity	0.95
Distance	1.00 ft
Reflected temp.	68.0 °F
Atmospheric temp.	68.0 °F
Relative humidity	50.0%
Ext. optics temp.	68.0 °F
Ext. optics trans.	1.00

File information

File name	FLIR1874.jpg
File size	258 KB
Width	320
Height	240
Minimum temp.	82.8 °F
Maximum temp.	89.8 °F

Camera information

Camera model	FLIR E75
Lens	FOL18
Camera serial	78518164
Filter	
Range max.	248.0 °F
Range min.	-4.0 °F
Field of view	23.50

Measurements

Bx1	
Max	89.4 °F
Avg	85.4 °F
Min	83.6 °F
Sp1	86.1 °F
Sp2	84.1 °F
Sp3	84.2 °F

Geolocation

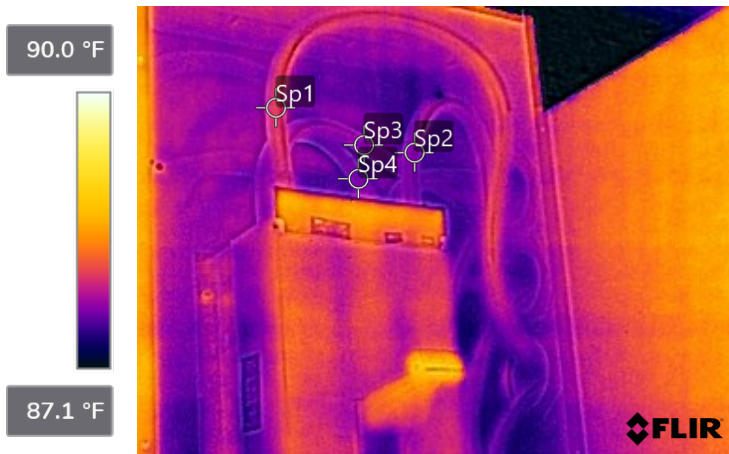
Coordinates	
Compass degrees	

Text annotations

The temperature observed in the 2P-30A circuit breaker is the result of the consumption measured at the time of the inspection.
 Phase A: 4 Amp
 Phase B: 4 Amp
 Deficiencies were not observed with this equipment at the time of the inspection.

Building 800 - Main Electrical Room - Main Service Disconnect #1 - Fedders and Circuit Breaker

Repairs Are Not Required



FLIR1880.jpg



78518164

Parameters

Emissivity	0.95
Distance	5.27 ft
Reflected temp.	68.0 °F
Atmospheric temp.	68.0 °F
Relative humidity	50.0%
Ext. optics temp.	68.0 °F
Ext. optics trans.	1.00

File information

File name	FLIR1880.jpg
File size	244 KB
Width	320
Height	240
Minimum temp.	86.6 °F
Maximum temp.	88.8 °F

Camera information

Camera model	FLIR E75
Lens	FOL18
Camera serial	78518164
Filter	
Range max.	248.0 °F
Range min.	-4.0 °F
Field of view	23.50

Measurements

Sp1	88.1 °F
Sp2	87.7 °F
Sp3	87.7 °F
Sp4	87.6 °F

Geolocation

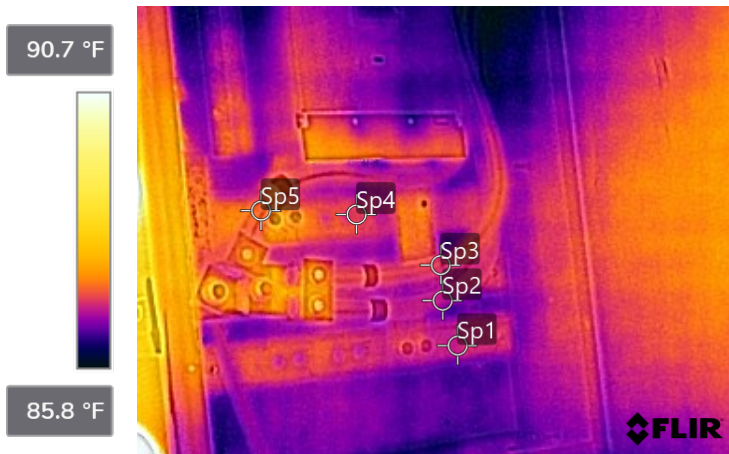
Coordinates	
Compass degrees	

Text annotations

Deficiencies were not observed at this equipment at the time of the inspection.

Building 800 - Main Electrical Room - Main Service Disconnect #1 - Circuit Breaker and Distribution Bars

Repairs Are Not Required



FLIR1884.jpg



78518164

Parameters

Emissivity	0.95
Distance	5.19 ft
Reflected temp.	68.0 °F
Atmospheric temp.	68.0 °F
Relative humidity	50.0%
Ext. optics temp.	68.0 °F
Ext. optics trans.	1.00

File information

File name	FLIR1884.jpg
File size	249 KB
Width	320
Height	240
Minimum temp.	85.7 °F
Maximum temp.	92.5 °F

Camera information

Camera model	FLIR E75
Lens	FOL18
Camera serial	78518164
Filter	
Range max.	248.0 °F
Range min.	-4.0 °F
Field of view	23.50

Measurements

Sp1	86.9 °F
Sp2	86.8 °F
Sp3	87.0 °F
Sp4	87.1 °F
Sp5	87.2 °F

Geolocation

Coordinates	
Compass degrees	

Text annotations

Deficiencies were not observed at this equipment at the time of the inspection.

Building 800 - Main Electrical Room - Main #1 - Units' Feeders and Main Circuit Breakers

Repairs Are Not Required



FLIR1886.jpg



78518164

Parameters

Emissivity	0.95
Distance	2.99 ft
Reflected temp.	68.0 °F
Atmospheric temp.	68.0 °F
Relative humidity	50.0%
Ext. optics temp.	68.0 °F
Ext. optics trans.	1.00

File information

File name	FLIR1886.jpg
File size	277 KB
Width	320
Height	240
Minimum temp.	85.1 °F
Maximum temp.	87.6 °F

Camera information

Camera model	FLIR E75
Lens	FOL18
Camera serial	78518164
Filter	
Range max.	248.0 °F
Range min.	-4.0 °F
Field of view	23.50

Measurements

Bx1	
Max	86.2 °F
Avg	85.9 °F
Min	85.7 °F
Bx2	
Max	86.0 °F
Avg	85.9 °F
Min	85.6 °F
Sp1	86.3 °F
Sp2	86.2 °F

Geolocation

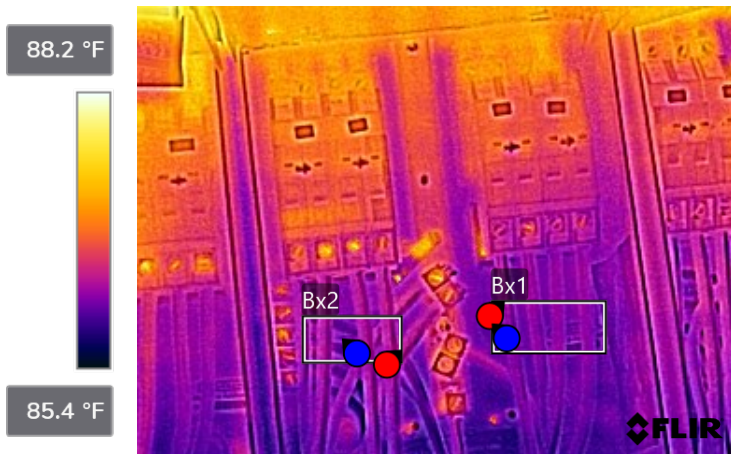
Coordinates	
Compass degrees	

Text annotations

Deficiencies were not observed at this equipment at the time of the inspection.

Building 800 - Main Electrical Room - Main #1 - Units' Feeders and Main Circuit Breakers

Repairs Are Not Required



FLIR1888.jpg



78518164

Parameters

Emissivity	0.95
Distance	3.34 ft
Reflected temp.	68.0 °F
Atmospheric temp.	68.0 °F
Relative humidity	50.0%
Ext. optics temp.	68.0 °F
Ext. optics trans.	1.00

File information

File name	FLIR1888.jpg
File size	295 KB
Width	320
Height	240
Minimum temp.	85.7 °F
Maximum temp.	88.2 °F

Camera information

Camera model	FLIR E75
Lens	FOL18
Camera serial	78518164
Filter	
Range max.	248.0 °F
Range min.	-4.0 °F
Field of view	23.50

Measurements

Bx1	
Max	86.2 °F
Avg	86.0 °F
Min	85.9 °F
Bx2	
Max	86.3 °F
Avg	86.1 °F
Min	86.0 °F

Geolocation

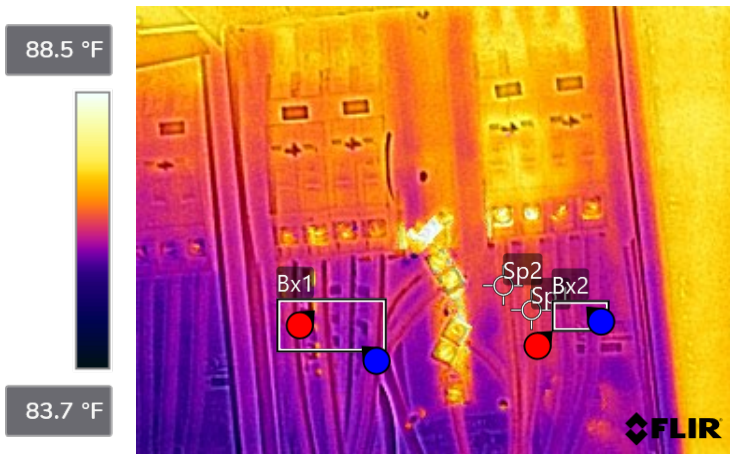
Coordinates	
Compass degrees	

Text annotations

Deficiencies were not observed at this equipment at the time of the inspection.

Building 800 - Main Electrical Room - Main #1 - Units' Feeders and Main Circuit Breakers

Repairs Are Not Required



FLIR1890.jpg



78518164

Parameters

Emissivity	0.95
Distance	3.19 ft
Reflected temp.	68.0 °F
Atmospheric temp.	68.0 °F
Relative humidity	50.0%
Ext. optics temp.	68.0 °F
Ext. optics trans.	1.00

File information

File name	FLIR1890.jpg
File size	262 KB
Width	320
Height	240
Minimum temp.	84.7 °F
Maximum temp.	95.1 °F

Camera information

Camera model	FLIR E75
Lens	FOL18
Camera serial	78518164
Filter	
Range max.	248.0 °F
Range min.	-4.0 °F
Field of view	23.50

Measurements

Bx1	
Max	87.0 °F
Avg	85.9 °F
Min	85.6 °F
Bx2	
Max	86.2 °F
Avg	86.0 °F
Min	85.9 °F
Sp1	86.3 °F
Sp2	86.2 °F

Geolocation

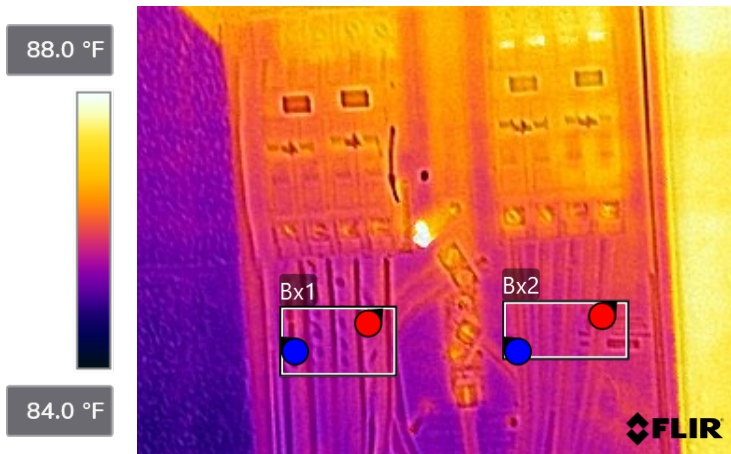
Coordinates	
Compass degrees	

Text annotations

Deficiencies were not observed at this equipment at the time of the inspection.

Building 800 - Main Electrical Room - Main #1 - Units' Feeders and Main Circuit Breakers

Repairs Are Not Required



FLIR1894.jpg



78518164

Parameters

Emissivity	0.95
Distance	3.01 ft
Reflected temp.	68.0 °F
Atmospheric temp.	68.0 °F
Relative humidity	50.0%
Ext. optics temp.	68.0 °F
Ext. optics trans.	1.00

File information

File name	FLIR1894.jpg
File size	239 KB
Width	320
Height	240
Minimum temp.	84.9 °F
Maximum temp.	93.8 °F

Camera information

Camera model	FLIR E75
Lens	FOL18
Camera serial	78518164
Filter	
Range max.	248.0 °F
Range min.	-4.0 °F
Field of view	23.50

Measurements

Bx1	
Max	85.9 °F
Avg	85.7 °F
Min	85.5 °F
Bx2	
Max	86.0 °F
Avg	85.8 °F
Min	85.6 °F

Geolocation

Coordinates	
Compass degrees	

Text annotations

Deficiencies were not observed at this equipment at the time of the inspection.

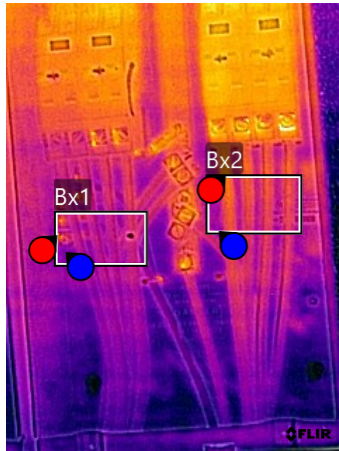
Building 800 - Main Electrical Room - Main #2 - Units' Feeders and Main Circuit Breakers

Repairs Are Not Required

88.4 °F



85.5 °F



FLIR1900.jpg



78518164

Parameters

Emissivity	0.95
Distance	3.07 ft
Reflected temp.	68.0 °F
Atmospheric temp.	68.0 °F
Relative humidity	50.0%
Ext. optics temp.	68.0 °F
Ext. optics trans.	1.00

File information

File name	FLIR1900.jpg
File size	248 KB
Width	240
Height	320
Minimum temp.	84.9 °F
Maximum temp.	90.0 °F

Camera information

Camera model	FLIR E75
Lens	FOL18
Camera serial	78518164
Filter	
Range max.	248.0 °F
Range min.	-4.0 °F
Field of view	23.50

Measurements

Bx1	
Max	87.6 °F
Avg	86.2 °F
Min	86.0 °F
Bx2	
Max	86.9 °F
Avg	86.4 °F
Min	86.0 °F

Geolocation

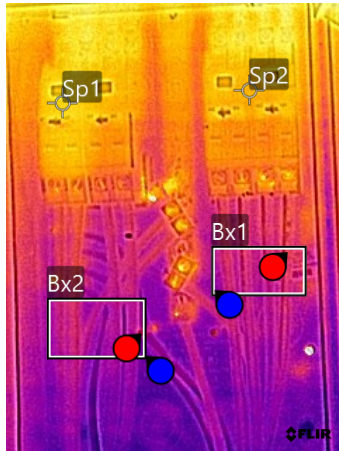
Coordinates	
Compass degrees	

Text annotations

Deficiencies were not observed at this equipment at the time of the inspection.

Building 800 - Main Electrical Room - Main #2 - Units' Feeders and Main Circuit Breakers

Repairs Are Not Required



FLIR1902.jpg



78518164

Parameters

Emissivity	0.95
Distance	3.16 ft
Reflected temp.	68.0 °F
Atmospheric temp.	68.0 °F
Relative humidity	50.0%
Ext. optics temp.	68.0 °F
Ext. optics trans.	1.00

File information

File name	FLIR1902.jpg
File size	265 KB
Width	240
Height	320
Minimum temp.	85.8 °F
Maximum temp.	94.1 °F

Camera information

Camera model	FLIR E75
Lens	FOL18
Camera serial	78518164
Filter	
Range max.	248.0 °F
Range min.	-4.0 °F
Field of view	23.50

Measurements

Bx1	
Max	86.9 °F
Avg	86.7 °F
Min	86.4 °F
Bx2	
Max	87.0 °F
Avg	86.6 °F
Min	86.3 °F
Sp1	87.8 °F
Sp2	87.6 °F

Geolocation

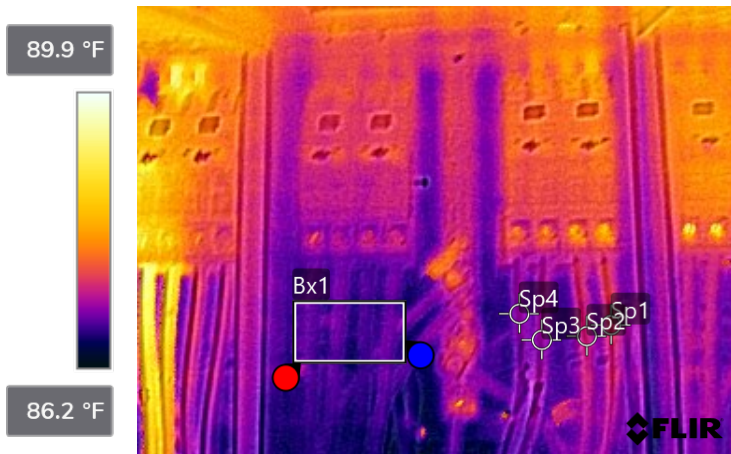
Coordinates	
Compass degrees	

Text annotations

Deficiencies were not observed at this equipment at the time of the inspection.

Building 800 - Main Electrical Room - Main #2 - Units' Feeders and Main Circuit Breakers

Repairs Are Not Required



FLIR1912.jpg



78518164

Parameters

Emissivity	0.95
Distance	3.44 ft
Reflected temp.	68.0 °F
Atmospheric temp.	68.0 °F
Relative humidity	50.0%
Ext. optics temp.	68.0 °F
Ext. optics trans.	1.00

File information

File name	FLIR1912.jpg
File size	262 KB
Width	320
Height	240
Minimum temp.	86.4 °F
Maximum temp.	89.7 °F

Camera information

Camera model	FLIR E75
Lens	FOL18
Camera serial	78518164
Filter	
Range max.	248.0 °F
Range min.	-4.0 °F
Field of view	23.50

Measurements

Bx1	
Max	87.0 °F
Avg	86.8 °F
Min	86.6 °F
Sp1	87.4 °F
Sp2	87.3 °F
Sp3	87.1 °F
Sp4	87.1 °F

Geolocation

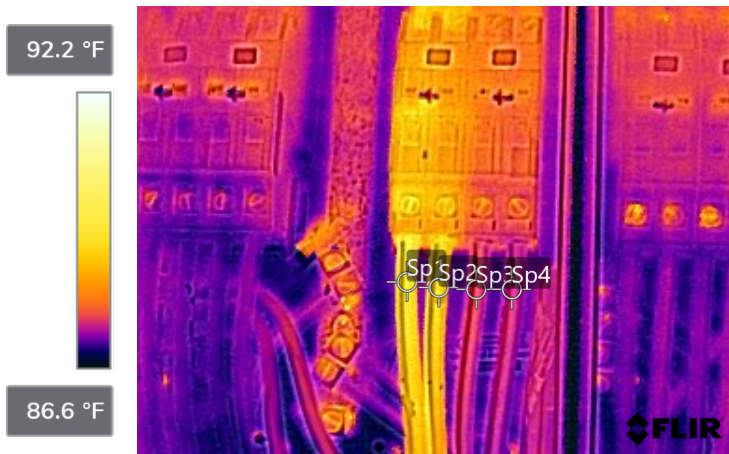
Coordinates	
Compass degrees	

Text annotations

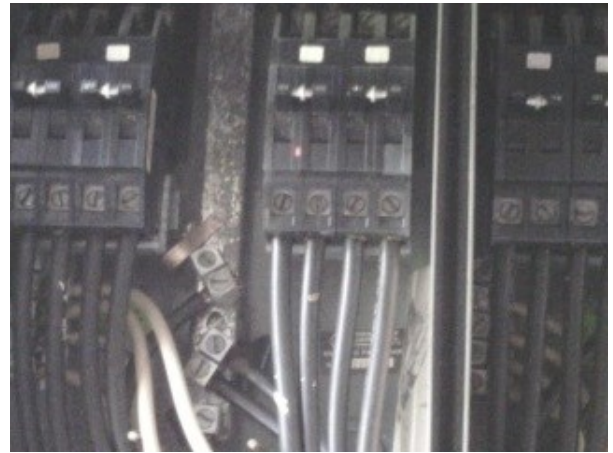
Deficiencies were not observed at this equipment at the time of the inspection.

Building 800 - Main Electrical Room - Main #2 - Units' Feeders and Main Circuit Breakers

Repairs Are Not Required



FLIR1920.jpg



78518164

Parameters

Emissivity	0.95
Distance	2.37 ft
Reflected temp.	68.0 °F
Atmospheric temp.	68.0 °F
Relative humidity	50.0%
Ext. optics temp.	68.0 °F
Ext. optics trans.	1.00

File information

File name	FLIR1920.jpg
File size	275 KB
Width	320
Height	240
Minimum temp.	86.1 °F
Maximum temp.	90.9 °F

Camera information

Camera model	FLIR E75
Lens	FOL18
Camera serial	78518164
Filter	
Range max.	248.0 °F
Range min.	-4.0 °F
Field of view	23.50

Measurements

Sp1	89.2 °F
Sp2	88.9 °F
Sp3	87.6 °F
Sp4	87.4 °F

Geolocation

Coordinates	
Compass degrees	

Text annotations

The temperature observed in the main circuit breaker is the result of the consumption measured at the time of the inspection.
 Phase A: 14 Amp
 Phase B: 15.7 Amp
 Deficiencies were not observed with this equipment at the time of the inspection.

Building 800 - Main Electrical Room - House Panel 1 - Feeders and Main Circuit Breaker

Repairs Are Not Required



FLIR1896.jpg



78518164

Parameters

Emissivity	0.95
Distance	3.43 ft
Reflected temp.	68.0 °F
Atmospheric temp.	68.0 °F
Relative humidity	50.0%
Ext. optics temp.	68.0 °F
Ext. optics trans.	1.00

File information

File name	FLIR1896.jpg
File size	304 KB
Width	320
Height	240
Minimum temp.	84.5 °F
Maximum temp.	89.8 °F

Camera information

Camera model	FLIR E75
Lens	FOL18
Camera serial	78518164
Filter	
Range max.	248.0 °F
Range min.	-4.0 °F
Field of view	23.50

Measurements

Bx1	
Max	87.8 °F
Avg	87.5 °F
Min	86.9 °F
Sp1	87.1 °F
Sp2	87.1 °F
Sp3	87.0 °F

Geolocation

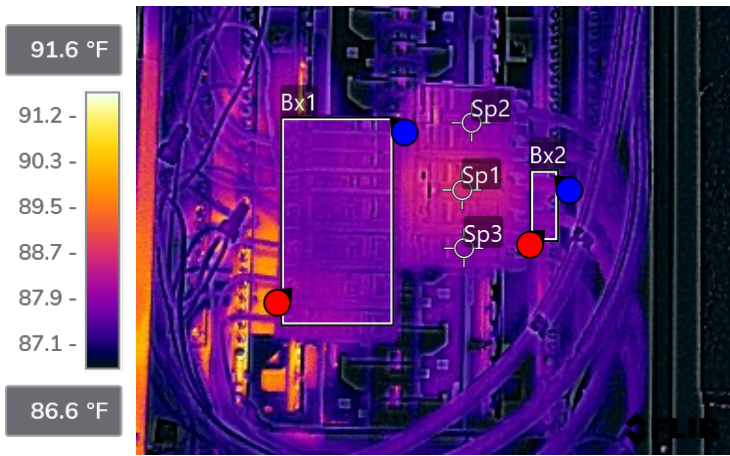
Coordinates	
Compass degrees	

Text annotations

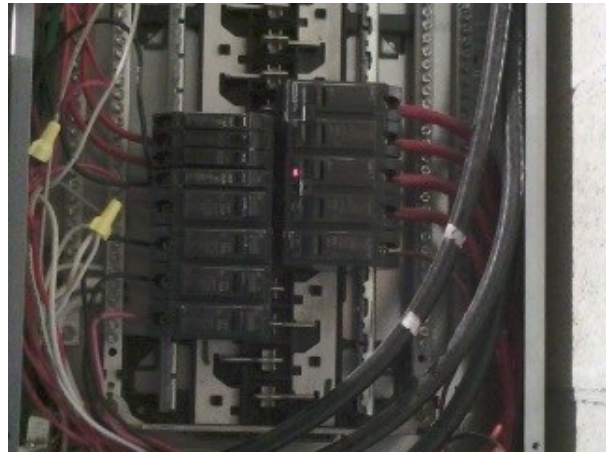
Deficiencies were not observed at this equipment at the time of the inspection.

Building 800 - Main Electrical Room - House Panel 1 - Circuit Breakers

Repairs Are Not Required



FLIR1898.jpg



78518164

Parameters

Emissivity	0.95
Distance	3.13 ft
Reflected temp.	68.0 °F
Atmospheric temp.	68.0 °F
Relative humidity	50.0%
Ext. optics temp.	68.0 °F
Ext. optics trans.	1.00

File information

File name	FLIR1898.jpg
File size	333 KB
Width	320
Height	240
Minimum temp.	84.2 °F
Maximum temp.	92.1 °F

Camera information

Camera model	FLIR E75
Lens	FOL18
Camera serial	78518164
Filter	
Range max.	248.0 °F
Range min.	-4.0 °F
Field of view	23.50

Measurements

Bx1	
Max	88.5 °F
Avg	87.7 °F
Min	87.2 °F
Bx2	
Max	88.1 °F
Avg	87.6 °F
Min	87.2 °F
Sp1	88.5 °F
Sp2	87.8 °F
Sp3	87.8 °F

Geolocation

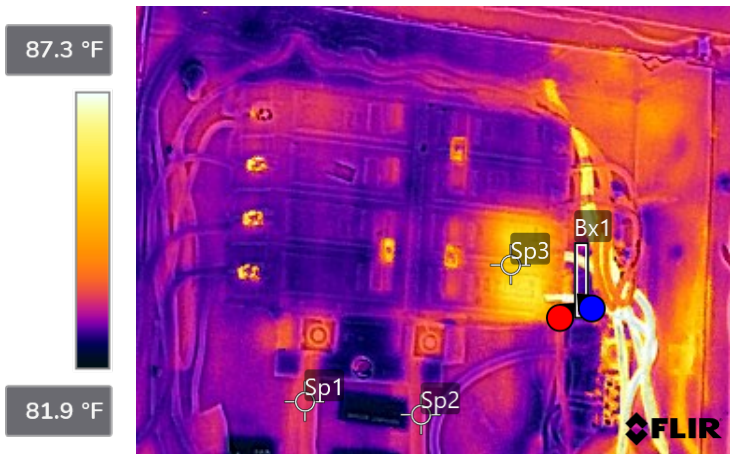
Coordinates	
Compass degrees	

Text annotations

Deficiencies were not observed at this equipment at the time of the inspection.

Building 800 - Laundry Room - Electrical Panel

Repairs Are Not Required



FLIR1878.jpg



78518164

Parameters

Emissivity	0.95
Distance	2.26 ft
Reflected temp.	68.0 °F
Atmospheric temp.	68.0 °F
Relative humidity	50.0%
Ext. optics temp.	68.0 °F
Ext. optics trans.	1.00

File information

File name	FLIR1878.jpg
File size	261 KB
Width	320
Height	240
Minimum temp.	81.9 °F
Maximum temp.	88.6 °F

Camera information

Camera model	FLIR E75
Lens	FOL18
Camera serial	78518164
Filter	
Range max.	248.0 °F
Range min.	-4.0 °F
Field of view	23.50

Measurements

Bx1	
Max	87.7 °F
Avg	83.9 °F
Min	82.3 °F
Sp1	83.2 °F
Sp2	83.1 °F
Sp3	85.2 °F

Geolocation

Coordinates	
Compass degrees	

Text annotations

The temperature observed in the 2P-30A circuit breaker is the result of the consumption measured at the time of the inspection.
 Phase A: 3.8 Amp
 Phase B: 4 Amp
 Deficiencies were not observed with this equipment at the time of the inspection.

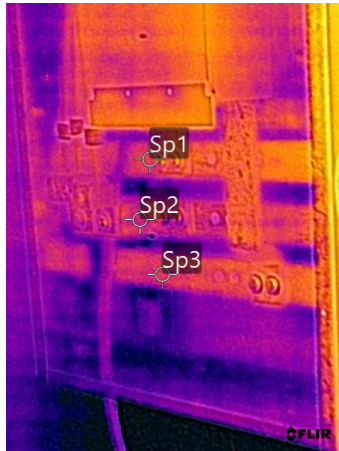
Building 900 - Main Electrical Room - Main Service Disconnect #1 - Circuit Breaker and Distribution Bars

Repairs Are Not Required

89.9 °F



86.0 °F



FLIR1936.jpg



78518164

Parameters

Emissivity	0.95
Distance	4.82 ft
Reflected temp.	68.0 °F
Atmospheric temp.	68.0 °F
Relative humidity	50.0%
Ext. optics temp.	68.0 °F
Ext. optics trans.	1.00

File information

File name	FLIR1936.jpg
File size	242 KB
Width	240
Height	320
Minimum temp.	85.6 °F
Maximum temp.	90.5 °F

Camera information

Camera model	FLIR E75
Lens	FOL18
Camera serial	78518164
Filter	
Range max.	248.0 °F
Range min.	-4.0 °F
Field of view	23.50

Measurements

Sp1	87.0 °F
Sp2	86.9 °F
Sp3	86.9 °F

Geolocation

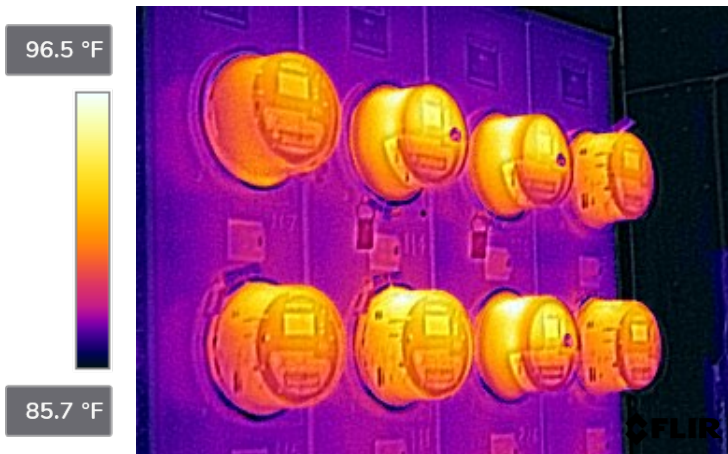
Coordinates	
Compass degrees	

Text annotations

Deficiencies were not observed at this equipment at the time of the inspection.

Building 900 - Main Electrical Room - Main Service Disconnect #1 - Unit's Main Breaker and Meters

Repairs Are Not Required



FLIR1940.jpg



78518164

Parameters

Emissivity	0.95
Distance	6.63 ft
Reflected temp.	68.0 °F
Atmospheric temp.	68.0 °F
Relative humidity	50.0%
Ext. optics temp.	68.0 °F
Ext. optics trans.	1.00

File information

File name	FLIR1940.jpg
File size	276 KB
Width	320
Height	240
Minimum temp.	84.1 °F
Maximum temp.	97.1 °F

Camera information

Camera model	FLIR E75
Lens	FOL18
Camera serial	78518164
Filter	
Range max.	248.0 °F
Range min.	-4.0 °F
Field of view	23.50

Measurements

Geolocation

Coordinates
Compass degrees

Text annotations

Deficiencies were not observed at this equipment at the time of the inspection.

Building 900 - Main Electrical Room - Main Service Disconnect #1 - Unit's Main Breaker and Meters

Repairs Are Not Required



FLIR1942.jpg



78518164

Parameters

Emissivity	0.95
Distance	6.76 ft
Reflected temp.	68.0 °F
Atmospheric temp.	68.0 °F
Relative humidity	50.0%
Ext. optics temp.	68.0 °F
Ext. optics trans.	1.00

File information

File name	FLIR1942.jpg
File size	291 KB
Width	320
Height	240
Minimum temp.	83.3 °F
Maximum temp.	96.9 °F

Camera information

Camera model	FLIR E75
Lens	FOL18
Camera serial	78518164
Filter	
Range max.	248.0 °F
Range min.	-4.0 °F
Field of view	23.50

Measurements

Geolocation

Coordinates
Compass degrees

Text annotations

Deficiencies were not observed at this equipment at the time of the inspection.

Building 900 - Main Electrical Room - Main Service Disconnect #2 - Feders and Circuit Breaker

Repairs Are Not Required



FLIR1958.jpg



78518164

Parameters

Emissivity	0.95
Distance	5.19 ft
Reflected temp.	68.0 °F
Atmospheric temp.	68.0 °F
Relative humidity	50.0%
Ext. optics temp.	68.0 °F
Ext. optics trans.	1.00

File information

File name	FLIR1958.jpg
File size	307 KB
Width	320
Height	240
Minimum temp.	83.4 °F
Maximum temp.	135.3 °F

Camera information

Camera model	FLIR E75
Lens	FOL18
Camera serial	78518164
Filter	
Range max.	248.0 °F
Range min.	-4.0 °F
Field of view	23.50

Measurements

Sp1	88.3 °F
Sp2	88.4 °F
Sp3	88.1 °F
Sp4	88.4 °F
Sp5	88.6 °F

Geolocation

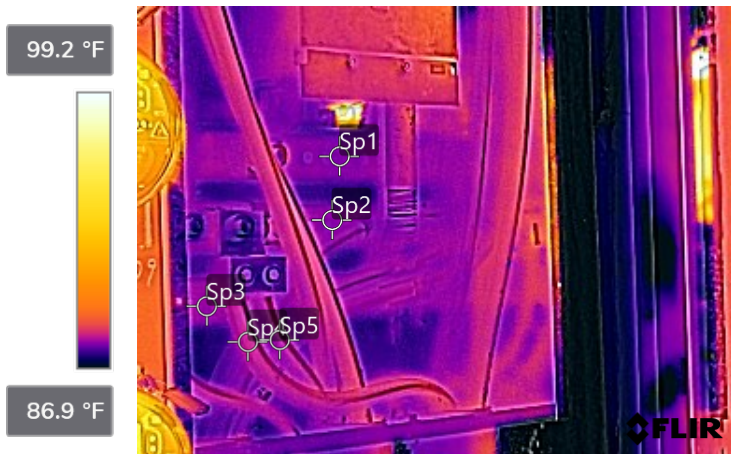
Coordinates	
Compass degrees	

Text annotations

Deficiencies were not observed at this equipment at the time of the inspection.

Building 900 - Main Electrical Room - Main Service Disconnect #2 - Circuit Breaker and Distribution Bars

Repairs Are Not Required



FLIR1960.jpg



78518164

Parameters

Emissivity	0.95
Distance	5.40 ft
Reflected temp.	68.0 °F
Atmospheric temp.	68.0 °F
Relative humidity	50.0%
Ext. optics temp.	68.0 °F
Ext. optics trans.	1.00

File information

File name	FLIR1960.jpg
File size	324 KB
Width	320
Height	240
Minimum temp.	83.2 °F
Maximum temp.	114.8 °F

Camera information

Camera model	FLIR E75
Lens	FOL18
Camera serial	78518164
Filter	
Range max.	248.0 °F
Range min.	-4.0 °F
Field of view	23.50

Measurements

Sp1	88.0 °F
Sp2	88.0 °F
Sp3	88.1 °F
Sp4	88.4 °F
Sp5	88.2 °F

Geolocation

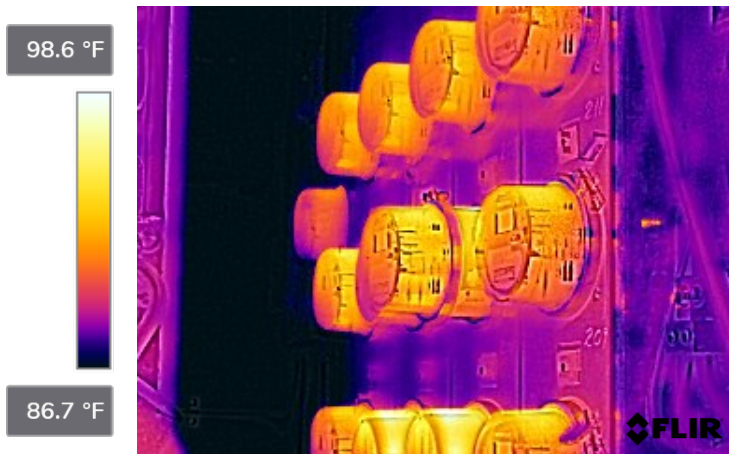
Coordinates	
Compass degrees	

Text annotations

Deficiencies were not observed at this equipment at the time of the inspection.

Building 900 - Main Electrical Room - Main Service Disconnect #2 - Unit's Main Breaker and Meters

Repairs Are Not Required



FLIR1954.jpg



78518164

Parameters

Emissivity	0.95
Distance	6.48 ft
Reflected temp.	68.0 °F
Atmospheric temp.	68.0 °F
Relative humidity	50.0%
Ext. optics temp.	68.0 °F
Ext. optics trans.	1.00

File information

File name	FLIR1954.jpg
File size	289 KB
Width	320
Height	240
Minimum temp.	84.3 °F
Maximum temp.	98.8 °F

Camera information

Camera model	FLIR E75
Lens	FOL18
Camera serial	78518164
Filter	
Range max.	248.0 °F
Range min.	-4.0 °F
Field of view	23.50

Measurements

Geolocation

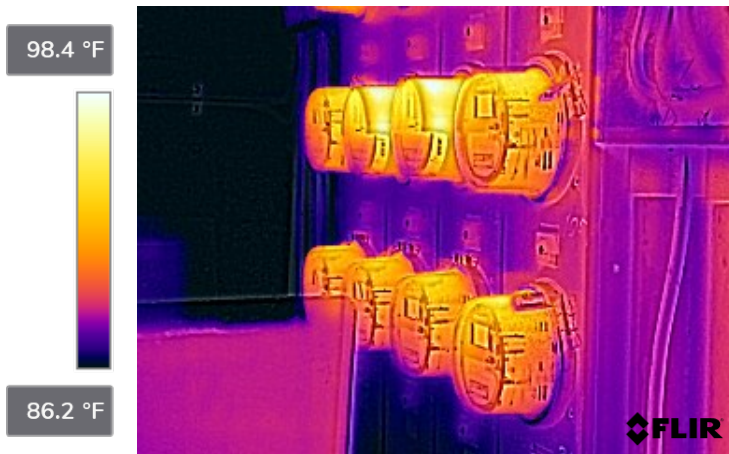
Coordinates
Compass degrees

Text annotations

Deficiencies were not observed at this equipment at the time of the inspection.

Building 900 - Main Electrical Room - Main Service Disconnect #2 - Unit's Main Breaker and Meters

Repairs Are Not Required



FLIR1956.jpg



78518164

Parameters

Emissivity	0.95
Distance	7.11 ft
Reflected temp.	68.0 °F
Atmospheric temp.	68.0 °F
Relative humidity	50.0%
Ext. optics temp.	68.0 °F
Ext. optics trans.	1.00

File information

File name	FLIR1956.jpg
File size	298 KB
Width	320
Height	240
Minimum temp.	84.3 °F
Maximum temp.	98.7 °F

Camera information

Camera model	FLIR E75
Lens	FOL18
Camera serial	78518164
Filter	
Range max.	248.0 °F
Range min.	-4.0 °F
Field of view	23.50

Measurements

Geolocation

Coordinates
Compass degrees

Text annotations

Deficiencies were not observed at this equipment at the time of the inspection.

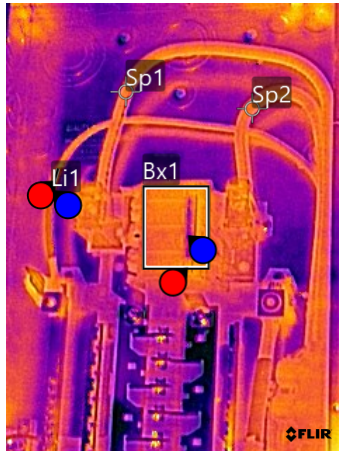
Building 900 - Main Electrical Room - House Panel #1 - Feeders and Main Circuit Breaker

Repairs Are Not Required

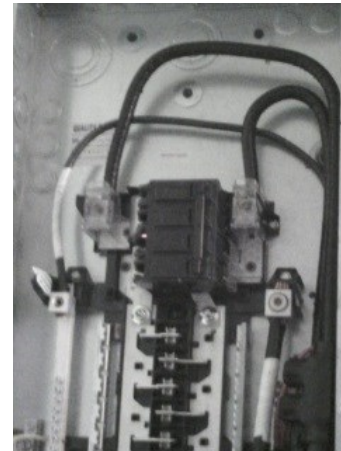
88.6 °F



85.9 °F



FLIR1950.jpg



78518164

Parameters

Emissivity	0.95
Distance	3.34 ft
Reflected temp.	68.0 °F
Atmospheric temp.	68.0 °F
Relative humidity	50.0%
Ext. optics temp.	68.0 °F
Ext. optics trans.	1.00

File information

File name	FLIR1950.jpg
File size	267 KB
Width	240
Height	320
Minimum temp.	85.5 °F
Maximum temp.	90.6 °F

Camera information

Camera model	FLIR E75
Lens	FOL18
Camera serial	78518164
Filter	
Range max.	248.0 °F
Range min.	-4.0 °F
Field of view	23.50

Measurements

Bx1	
Max	87.4 °F
Avg	87.1 °F
Min	86.4 °F
Li1	
Max	87.3 °F
Avg	87.2 °F
Min	87.1 °F
Sp1	
Max	87.2 °F
Sp2	
Max	87.1 °F

Geolocation

Coordinates
Compass degrees

Text annotations

Deficiencies were not observed at this equipment at the time of the inspection.

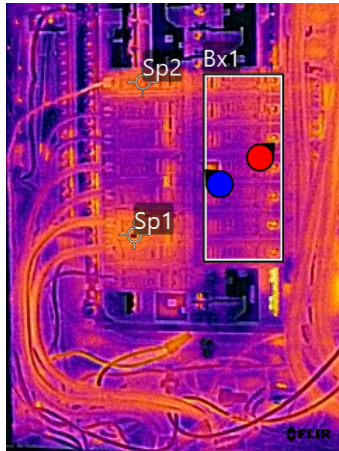
Building 900 - Main Electrical Room - House Panel #1 - Circuit Breakers

Repairs Are Not Required

91.1 °F



86.6 °F



FLIR1948.jpg



78518164

Parameters

Emissivity	0.95
Distance	3.15 ft
Reflected temp.	68.0 °F
Atmospheric temp.	68.0 °F
Relative humidity	50.0%
Ext. optics temp.	68.0 °F
Ext. optics trans.	1.00

File information

File name	FLIR1948.jpg
File size	322 KB
Width	240
Height	320
Minimum temp.	86.0 °F
Maximum temp.	90.7 °F

Camera information

Camera model	FLIR E75
Lens	FOL18
Camera serial	78518164
Filter	
Range max.	248.0 °F
Range min.	-4.0 °F
Field of view	23.50

Measurements

Bx1	
Max	89.1 °F
Avg	87.3 °F
Min	86.8 °F
Sp1	87.7 °F
Sp2	87.6 °F

Geolocation

Coordinates	
Compass degrees	

Text annotations

Deficiencies were not observed at this equipment at the time of the inspection.

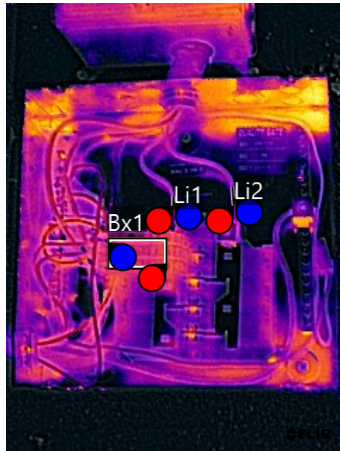
Building 900 - Main Electrical Room - House Panel #2

Repairs Are Not Required

92.4 °F



86.7 °F



FLIR1952.jpg



78518164

Parameters

Emissivity	0.95
Distance	3.47 ft
Reflected temp.	68.0 °F
Atmospheric temp.	68.0 °F
Relative humidity	50.0%
Ext. optics temp.	68.0 °F
Ext. optics trans.	1.00

File information

File name	FLIR1952.jpg
File size	270 KB
Width	240
Height	320
Minimum temp.	85.6 °F
Maximum temp.	90.9 °F

Camera information

Camera model	FLIR E75
Lens	FOL18
Camera serial	78518164
Filter	
Range max.	248.0 °F
Range min.	-4.0 °F
Field of view	23.50

Measurements

Bx1	
Max	87.5 °F
Avg	87.3 °F
Min	87.2 °F
Li1	
Max	87.1 °F
Avg	87.1 °F
Min	87.1 °F
Li2	
Max	87.1 °F
Avg	87.0 °F
Min	87.0 °F

Geolocation

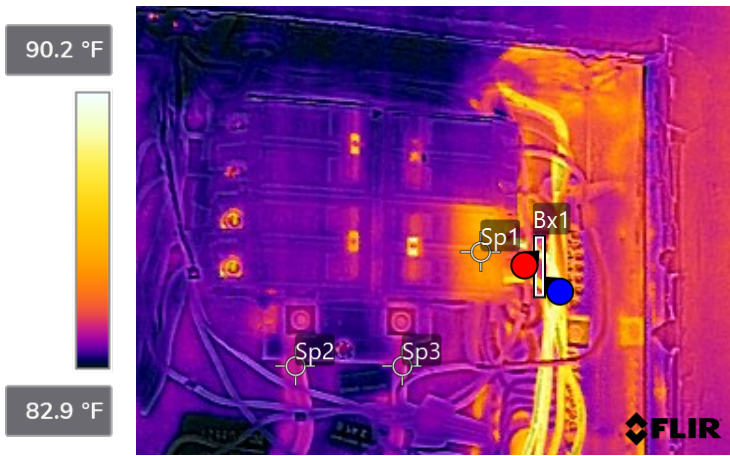
Coordinates	
Compass degrees	

Text annotations

Deficiencies were not observed at this equipment at the time of the inspection.

Building 900 - Laundry Room - Electrical Panel

Repairs Are Not Required



FLIR1922.jpg



78518164

Parameters

Emissivity	0.95
Distance	2.48 ft
Reflected temp.	68.0 °F
Atmospheric temp.	68.0 °F
Relative humidity	50.0%
Ext. optics temp.	68.0 °F
Ext. optics trans.	1.00

File information

File name	FLIR1922.jpg
File size	269 KB
Width	320
Height	240
Minimum temp.	82.6 °F
Maximum temp.	90.2 °F

Camera information

Camera model	FLIR E75
Lens	FOL18
Camera serial	78518164
Filter	
Range max.	248.0 °F
Range min.	-4.0 °F
Field of view	23.50

Measurements

Bx1	
Max	89.3 °F
Avg	85.4 °F
Min	83.7 °F
Sp1	85.5 °F
Sp2	83.9 °F
Sp3	83.9 °F

Geolocation

Coordinates	
Compass degrees	

Text annotations

The temperature observed in the 2P-30A circuit breaker is the result of the consumption measured at the time of the inspection.
 Phase A: 5.1 Amp
 Phase B: 3.8 Amp
 Deficiencies were not observed with this equipment at the time of the inspection.

3. DISCLAIMERS, EXCLUSIONS, LIMITATIONS & REQUIREMENTS

List of Equipment as approved by Client. Even if Thermographer/Engineer tries to locate all pieces of equipment required to be inspected, only the Client knows the location of those devices. Thermographer/Engineer is NOT responsible for the List of Equipment.

Thermographer/Engineer is NOT responsible to confirm a 400A or greater electrical service.

Thermographer/Engineer is NOT responsible for electrical systems operating at less than 40% of their nominal load. All your electrical equipment was inspected in an “as found” condition. As we do not know the loading on any given circuit at the time it was inspected, any circuit not under load would not show any issues, even though once loaded, a serious problem may exist. All efforts are made to view equipment that is operational at the time of the inspection. Ideally, we would request a minimum of 40% current loading, but we also understand that some circuits are intermittent in their usage. We do our best to coordinate with your personnel or the electricians to obtain amperage readings on the circuits where anomalies are located. As explained earlier, this is a good reference along with the temperature readings to determine how severe an anomaly is or may become. Our statements are a starting point for the evaluation of the seriousness of an anomaly. This survey relies on your personnel to know the criticality of a component as it relates to your processes. They are better suited to evaluate any corrective action that may need to be undertaken and establish a time frame for responding to the documented anomaly. Due to the conditions of the loads and other factors, the infrared thermography inspection report depicted here is NOT covered by professional liability.

Big devices (switchgears, transformers, etc.) might count as more than one piece according to the amount of covers and spacing between electrical parts/contacts.

Meter Centers are OUT of the scope of the inspection unless the Client secures access with the Utility Company. AC disconnects are OUT of the scope of the inspection unless expressly requested by the Client. The bathrooms' small exhaust fans are OUT of the scope of the inspection unless expressly requested by the Client.

Equipment on the roof or located higher than 5 feet on a wall, is OUT of the scope of the inspection unless a proper OSHA-compliant ladder is provided (two-leg ladder in case of equipment located on a wall).

Removal and re-installation of covers are OUT of the scope of the inspection. Use the services of a licensed electrical contractor.

The client should be PRESENT at the time of the inspection to authorize power off the service, in case that is needed to remove a cover, otherwise, that equipment will NOT be inspected. The equipment might fail when restarting the service, that is NOT our responsibility and repairs are OUT of our scope.

The possible causes and recommendations, if any stated in this Thermography Report, were based only on the observable conditions and information supplied by the Client or representatives. The licensed electrical contractor hired by the Client to perform corrections will be responsible to find the real causes of the problems and provide proper repairs confirming that issues have been corrected, with an infrared imager, before calling for re-inspection. Thermographer/Engineer is NOT responsible for repairs and/or for possible subsequent re-inspections if issues were not totally resolved.

The report is only valid for 180 days from the time of the initial inspection. Please request a re-inspection within that time frame. After 180 days, from the initial inspection, the Thermographer/Engineer will have NO responsibility and NO obligation to reinspect. At the desire of the Thermographer/Engineer, fees and conditions might be discussed for a "possible" re-inspection or new inspection. If parties do not agree with the fee and conditions, the Client will need to hire other Professionals.

Signature and seal in this report are STRICTLY limited to ONLY thermal problems found at the time of the inspection. Even if other problems could be found, our inspection was NOT in charge of covering those issues. We have NO responsibility or liability for other issues that might be present in the electrical system. If other issues were discovered, beyond the thermal problems,

the Engineer of Records for the Electrical Recertification Inspection and the Owner were properly informed about the problems and the need for repairs, but that part of the inspection is OUT of my scope. The Engineer signing and sealing this document might NOT report any other problem not directly related to a thermal problem (e.g., double taps, corrosion, improper wiring, exposed cables, improper size of conductors and branch circuit breakers and fuses, improper color of conductors, improper junctions between grounding and neutral cables, etc.).

4. CLOSURE

Apex Precision Engineering provided professional services in accordance with the applicable standard of care. Apex Precision Engineering based all findings, opinions, and recommendations on visual observations, professional experience, interviews with those knowledgeable about the circumstances pertinent to the subject investigation, evaluation of reviewed documentation, and current industry standard practices.

Apex Precision Engineering's visual observations include no specific knowledge of concealed construction or subsurface conditions at locations not exposed. The scope did not include invasive investigation, component sampling, laboratory analysis, an environmental site assessment, or engineering evaluations of structural, mechanical, electrical, or other systems with related calculations and review of design assumptions.

In performing this assignment, Apex Precision Engineering relied upon information provided by the Client. Accordingly, the opinions in this memo are valid only to the extent that the information provided was accurate and complete.

This memo summarizes Apex Precision Engineering's findings, opinions, and recommendations as of the date of issuance. Should new information or additional documentation become available, Apex Precision Engineering reserves the right to amend or revise its opinions and recommendations.

No other warranty, expressed or implied, is made as to the findings presented in this memo.